

WAAS CH 77831 W07A	APP CRS 069°	Rwy Idg TDZE Apt Elev	5506 812 812
--	------------------------	-----------------------------	---

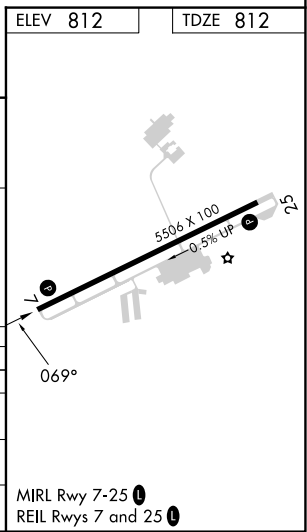
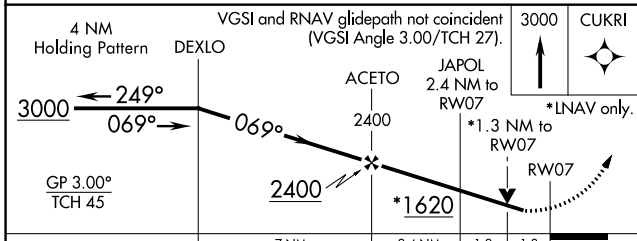
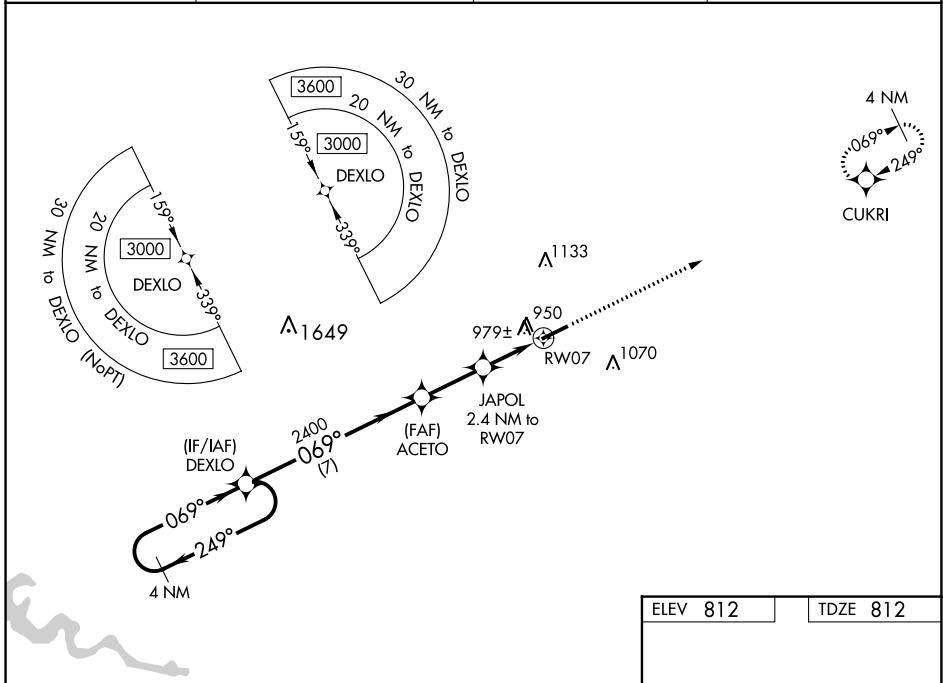
RNAV (GPS) RWY 7

CAPITAL CITY (F'TT)

⚠ For uncompensated Baro-VNAV systems, LNAV/VNAV NA below -16°C (4°F) or above 54°C (130°F). DME/DME RNP-0.3 NA. When local altimeter setting not received, use Lexington altimeter setting and increase LPV DA to 1149 feet and LNAV/VNAV DA to 1293 feet and all visibilities ¼ mile; increase all MDAs 80 feet, LNAV visibility Cats C and D ½ mile, and Circling visibility Cats C and D ¼ mile. VDP and Baro-VNAV NA with Lexington altimeter setting. Helicopter visibility reduction below ¾ SM NA.

MISSED APPROACH:
Climb to 3000 direct CUKRI and hold.

ASOS 119.275	LEXINGTON APP CON 120.75 298.9	CLNC DEL 118.65	UNICOM 122.8 (CTAF) 0
------------------------	--	---------------------------	---------------------------------



CATEGORY	A	B	C	D
LPV DA	1087-7/8		275 (300-7/8)	
LNAV/VNAV DA	1231-13/8		419 (500-13/8)	
LNAV MDA	1240-1	428 (500-1)	1240-1 1/4	428 (500-1 1/4)
C CIRCLING	1280-1 468 (500-1)	1380-1 568 (600-1)	1440-1 3/4 628 (700-1 3/4)	1440-2 628 (700-2)

SE-1, 26 DEC 2024 to 23 JAN 2025

SE-1, 26 DEC 2024 to 23 JAN 2025