

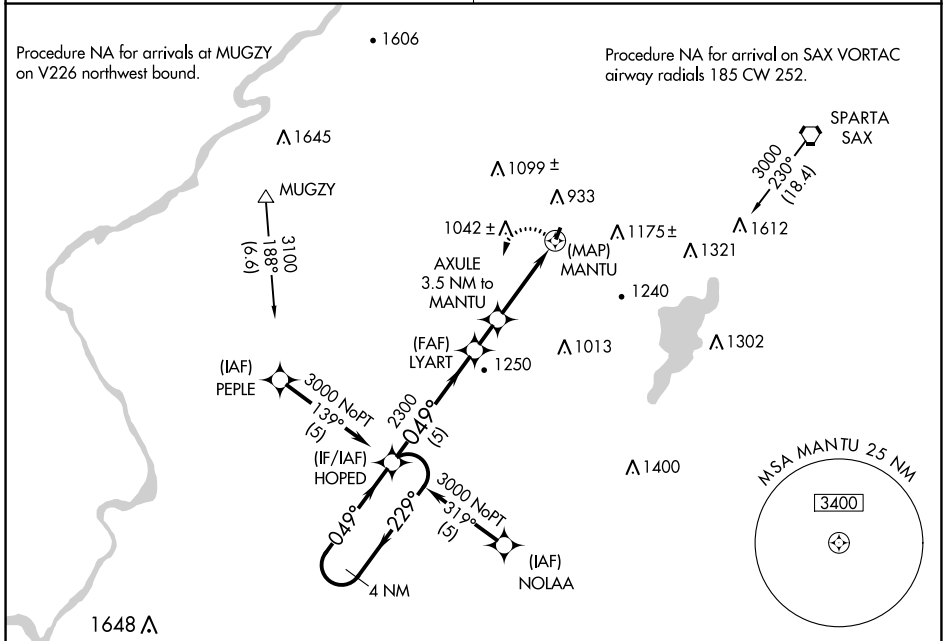
APP CRS	Rwy Idg	<b>1981</b>
<b>049°</b>	TDZE	<b>583</b>
	Apt Elev	<b>583</b>

# RNAV (GPS) RWY 3

AEROFLEX/ANDOVER (12N)

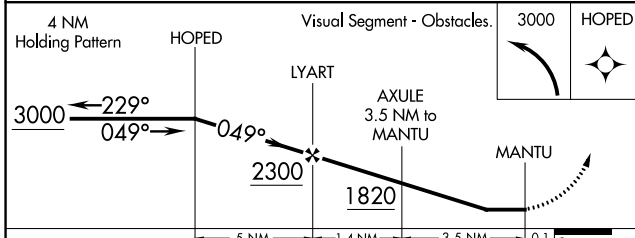
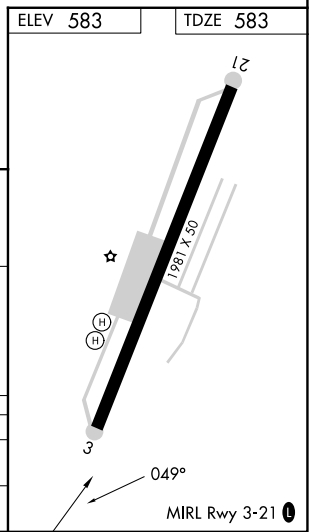
RNP APCH.	MISSED APPROACH: Climbing left turn to 3000 direct HOPED and hold.
<p><b>▼</b> When local altimeter setting not received, use Caldwell altimeter setting and increase all MDA 120 feet. Procedure NA at night. Rwy 3 helicopter visibility reduction below 1 SM NA.</p>	

NEWARK APP CON <b>127.6 379.9</b>	UNICOM <b>122.8 (CTAF) 0</b>
--------------------------------------	---------------------------------



NE-2, 26 DEC 2024 to 23 JAN 2025

NE-2, 26 DEC 2024 to 23 JAN 2025



CATEGORY	A	B	C	D
LNAV MDA	1340-1 757 (800-1)		NA	
CIRCLING	1560-1¼ 977 (1000-1¼)		NA	