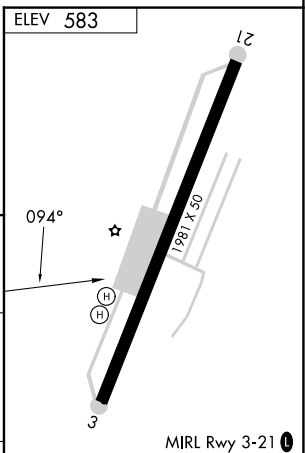
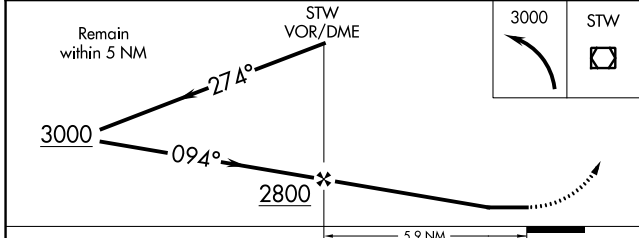
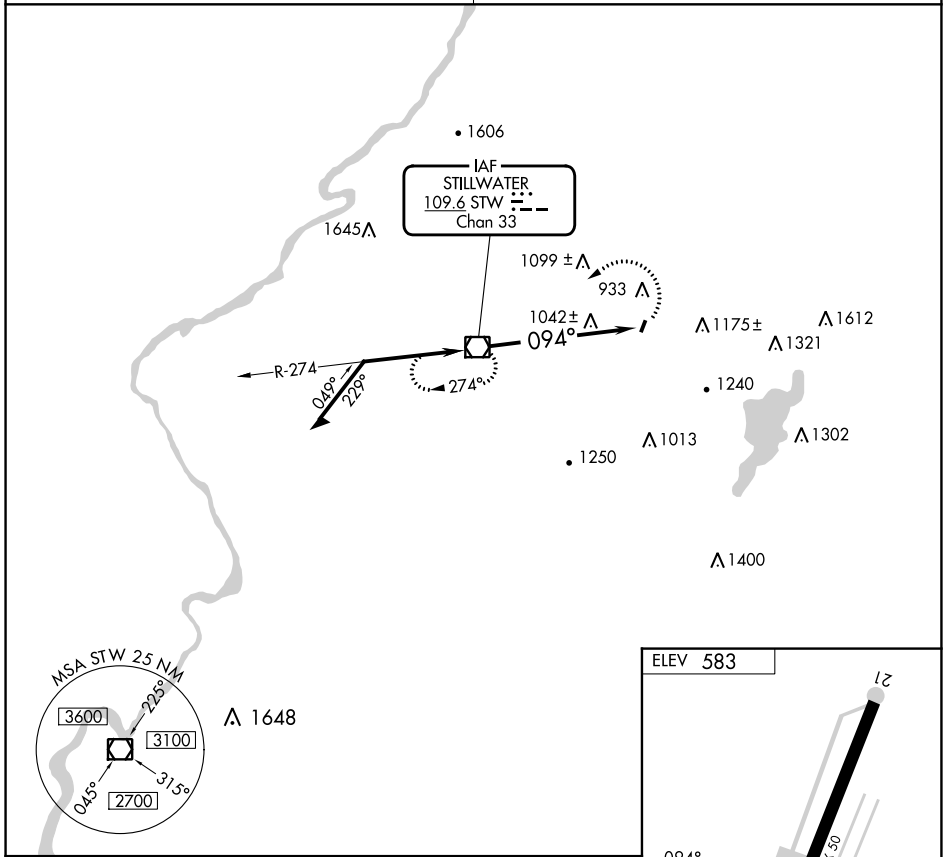


VOR/DME STW 109.6 Chan 33	APP CRS 094°	Rwy Idg TDZE Apt Elev	1981 N/A 583
---	------------------------	-----------------------------	---

VOR-A
AEROFLEX/ANDOVER (12N)

▼ When local altimeter setting not received, use Caldwell altimeter setting and increase MDA 120 feet. Procedure NA at night.
▲ MISSED APPROACH: Climbing left turn to 3000 direct STW VOR/DME and hold.

NEWARK APP CON 127.6 379.9	UNICOM 122.8 (CTAF)
--------------------------------------	-------------------------------



CATEGORY	A	B	C	D	FAF to MAP 5.9 NM
CIRCLING	1560-1¼ 977 (1000-1¼)		NA		Knots: 60 90 120 150 180 Min:Sec: 5:54 3:56 2:57 2:22 1:58

NE-2, 26 DEC 2024 to 23 JAN 2025

NE-2, 26 DEC 2024 to 23 JAN 2025