

LOC/DME I-CGF <b>111.1</b> Chan 48	APP CRS <b>237°</b>	Rwy Idg TDZE Apt Elev	<b>5000</b> <b>873</b> <b>876</b>
--	------------------------	-----------------------------	---

# ILS or LOC RWY 24

CUYAHOGA COUNTY (CGF)

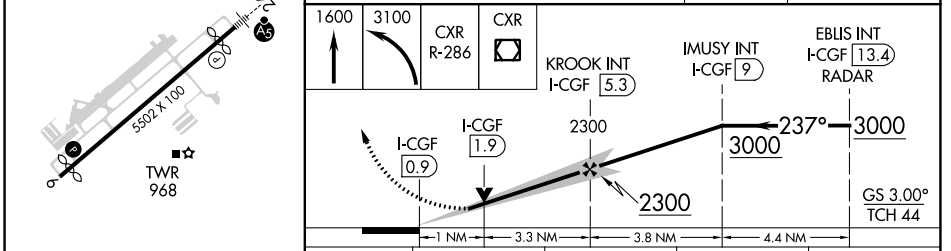
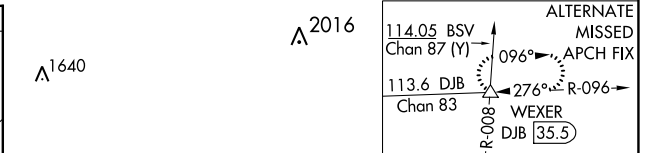
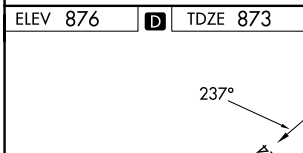
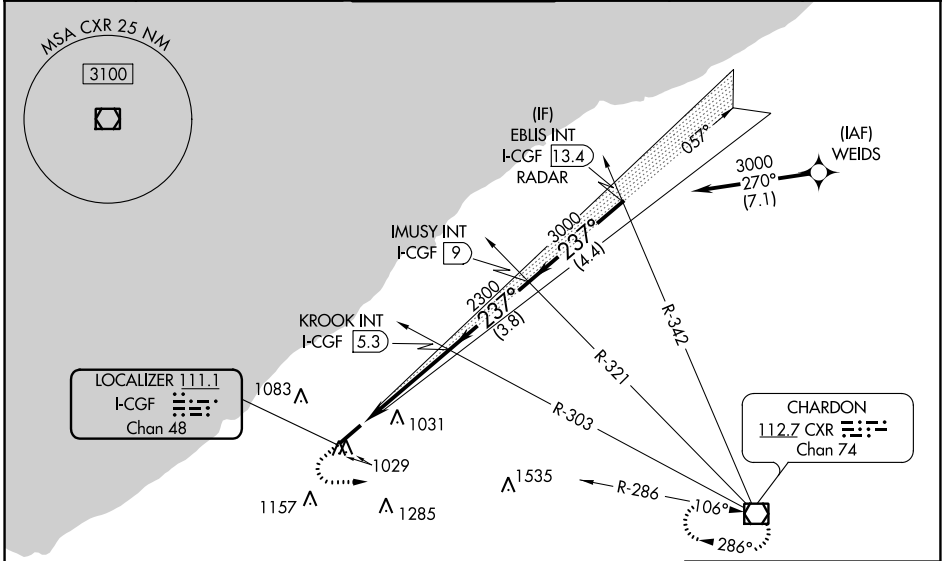
RNP APCH-GPS. From WEIDS.  
RNAV 1-GPS or RADAR required for procedure entry.  
Aircraft not GPS equipped - RADAR required for procedure entry.

**MALS**  
AS

**MISSED APPROACH:** Climb to 1600 then climbing left turn to 3100 on CXR VOR/DME R-286 to CXR VOR/DME and hold.

**Autopilot coupled approach** NA below 1513.  
**Rwy 24 helicopter visibility reduction** below 3/4 SM NA.  
For inop ALS increase S-LOC Cats C/D to 1 SM.

D-ATIS <b>119.95</b>	CLEVELAND APP CON <b>125.35 346.325</b>	<b>COUNTY TOWER*</b> <b>118.5 (CTAF)</b>	GND CON <b>121.85</b>	CINC DEL <b>121.85</b> (when tower closed)
-------------------------	--	---	--------------------------	--



CATEGORY	A	B	C	D
S-ILS 24	1073-1/2		200 (200-1/2)	
S-LOC 24	1240-1/2	367 (400-1/2)	1240-5/8	367 (400-5/8)
<b>CIRCLING</b>	1400-1 524 (600-1)	1500-1 624 (700-1)	1560-2 684 (700-2)	1620-2 1/2 744 (800-2 1/2)

EC-2, 26 DEC 2024 to 23 JAN 2025

EC-2, 26 DEC 2024 to 23 JAN 2025