

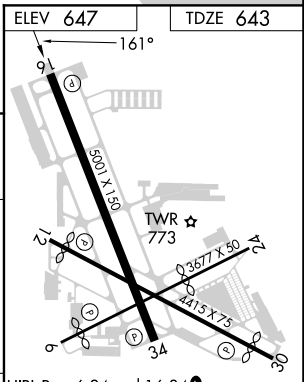
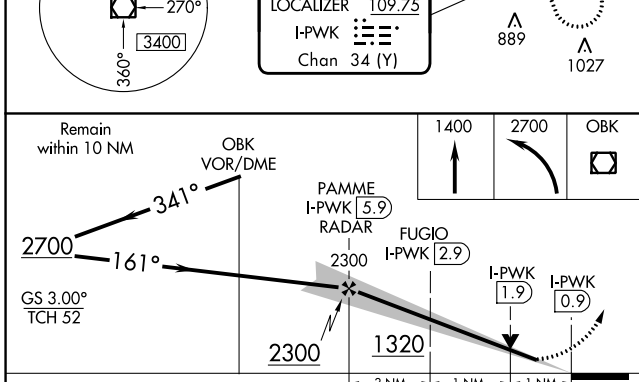
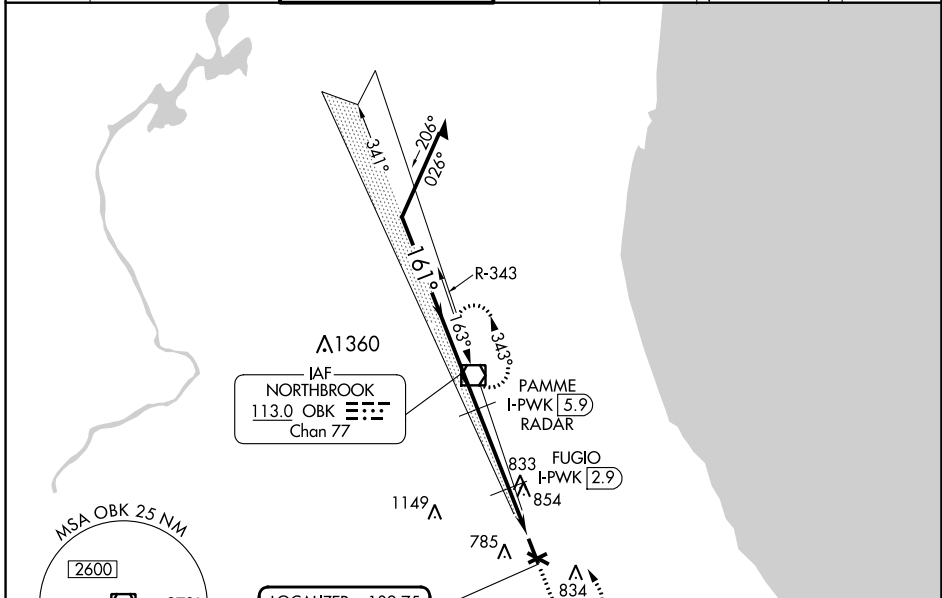
LOC/DME I-PWK <b>109.75</b> Chan <b>34</b> (Y)	APP CRS <b>161°</b>	Rwy Idg 5001 TDZE 643 Apt Elev 647
--	------------------------	---

# ILS or LOC RWY 16

CHICAGO EXEC (PWK)

DME required.		MISSED APPROACH: Climb to 1400 then climbing left turn to 2700 direct OBK VOR/DME and hold, continue climb-in-hold to 2700.				
<p><b>⚠</b> Circling Rwy 6, 12, 24, 30 NA at night. Rwy 16 helicopter visibility reduction below 3/4 SM NA.</p>						

ATIS <b>124.2</b>	CHICAGO APP CON <b>120.55 306.925</b>	EXECUTIVE TOWER ★ <b>119.9</b> (CTAF) <b>0</b>	GND CON <b>121.7</b>	CLNC DEL <b>124.7</b>	CLNC DEL <b>124.7</b> (When twr closed)	UNICOM <b>122.95</b>
----------------------	--	---	-------------------------	--------------------------	---	-------------------------



CATEGORY	A	B	C	D	HIRL Rwy 6-24 and 16-34 <b>0</b> MIRL Rwy 12-30 <b>0</b> REIL Rwy 12 and 30 REIL Rwy 16 and 34 <b>0</b> RLLS Rwy 16 <b>0</b> FAF to MAP 5 NM Knots: 60 90 120 150 180 Min:Sec: 5:00 3:20 2:30 2:00 1:40
S-ILS 16		927-7/8 284 (300-7/8)			
S-LOC 16		1020-1 377 (400-1)			
<b>C</b> CIRCLING	1140-1 493 (500-1)	1160-1 513 (600-1)	1200-1 1/2 553 (600-2)	1460-2 3/4 813 (900-2 3/4)	

EC-3, 26 DEC 2024 to 23 JAN 2025

EC-3, 26 DEC 2024 to 23 JAN 2025