

VOR/DME OBK 113.0 Chan 77	APP CRS 164°	Rwy Idg TDZE 5001 643 Apt Elev 647
--	------------------------	---

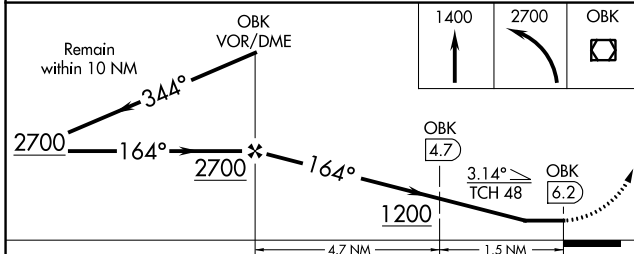
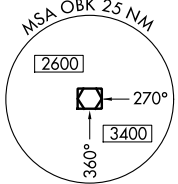
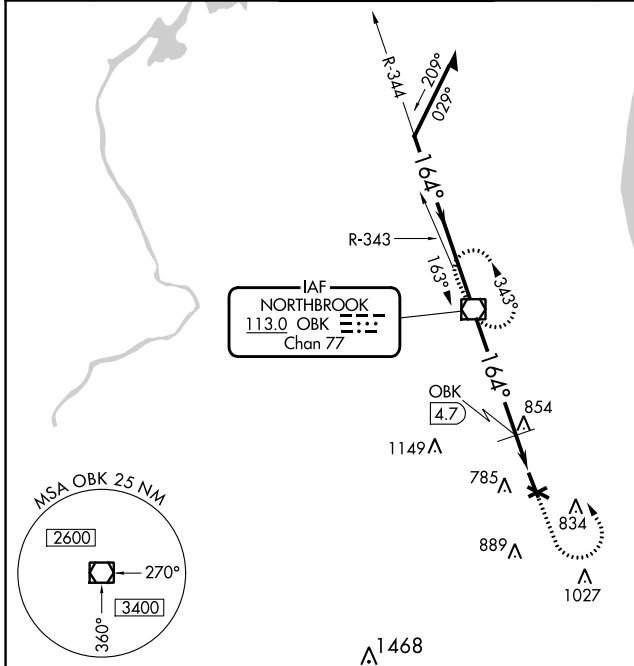
VOR RWY 16

CHICAGO EXEC (PWK)

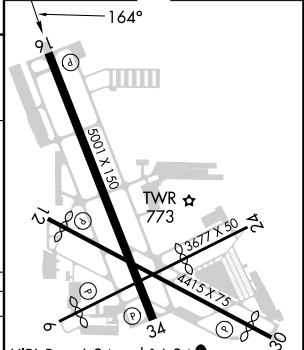
⚠ Rwy 16 helicopter visibility reduction below 3/4 SM NA. When local altimeter setting not received, use Chicago-O'Hare Intl altimeter setting: increase all MDAs 40 feet and visibility DME minimums S-16 Cats C and D 1/4 SM. Circling Rwy 6, 12, 24, 30 NA at night.

MISSED APPROACH: Climb to 1400, then climbing left turn to 2700 direct OBK VOR/DME and hold.

ATIS 124.2	CHICAGO APP CON 120.55 306.925	EXECUTIVE TOWER ★ 119.9 (CTAF) 0	GND CON 121.7	CLNC DEL 124.7	CLNC DEL 124.7 (When twr closed)	UNICOM 122.95
----------------------	--	---	-------------------------	--------------------------	---	-------------------------



ELEV 647	TDZE 643
----------	----------



CATEGORY	A	B	C	D
S-16	1200-1	557 (600-1)	1200-1½ 557 (600-1½)	1200-1¾ 557 (600-1¾)
CIRCLING	1200-1	553 (600-1)	1200-1½ 553 (600-1½)	1460-2¾ 813 (900-2¾)
DME MINIMUMS				
S-16	1120-1	477 (500-1)	1120-1¼ 477 (500-1¼)	1120-1½ 477 (500-1½)
CIRCLING	1140-1 493 (500-1)	1160-1 513 (600-1)	1200-1½ 553 (600-1½)	1460-2¾ 813 (900-2¾)

HIRL Rwy 6-24 and 16-34 0					
MIRL Rwy 12-30 0					
REIL Rwys 12 and 30					
REIL Rwys 16 and 34 0					
RLLS Rwy 16 0					
FAF to MAP 6.2 NM					
Knots	60	90	120	150	180
Min:Sec	6:12	4:08	3:06	2:29	2:04

EC-3, 26 DEC 2024 to 23 JAN 2025

EC-3, 26 DEC 2024 to 23 JAN 2025