


APP CRS	Rwy Idg	7510
312°	TDZE	43
	Apt Elev	46

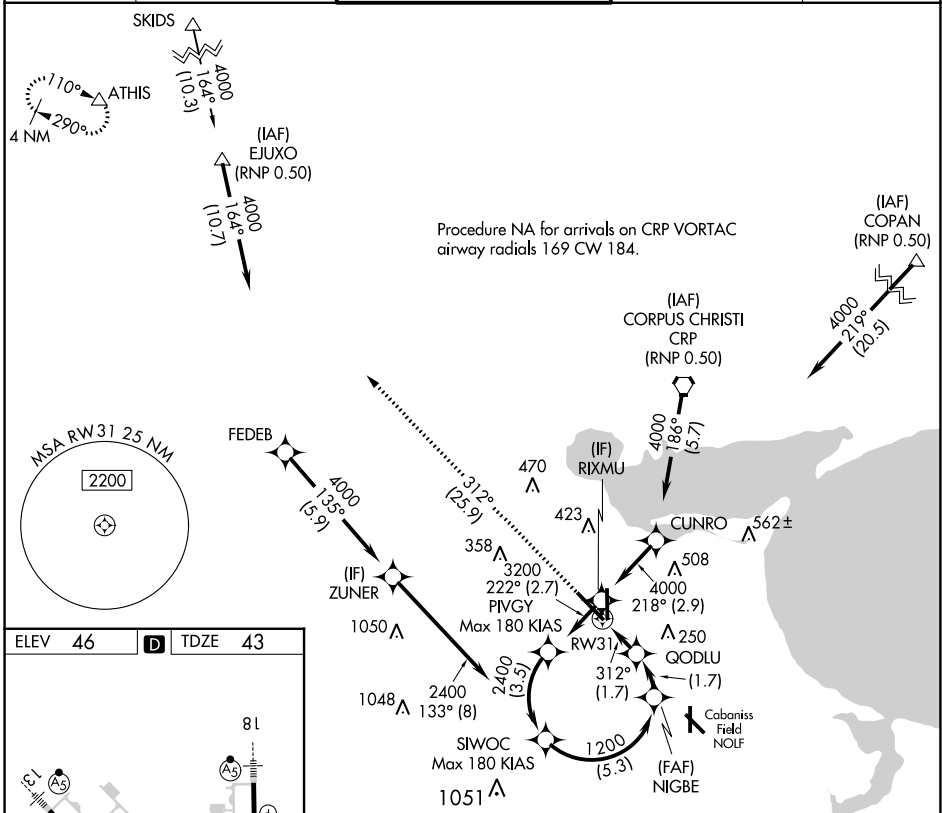
RNAV (RNP) Z RWY 31

CORPUS CHRISTI INTL (CRP)

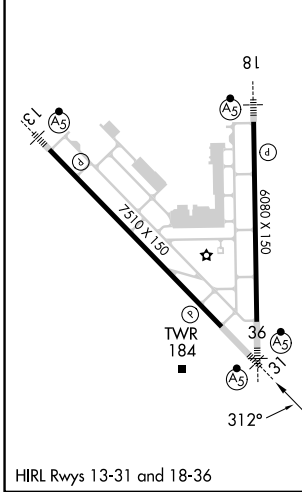
▼ For uncompensated Baro-VNAV systems, procedure NA below -1°C (31°F) or above 54°C (130°F). GPS and RF required. For inop MALSR, increase RNP 0.14 all Cats visibility to 7/5 mile.
 *Missed approach requires minimum climb of 335 feet per NM to 500.

MALSR

MISSED APPROACH: Climb to 2000 on track 312° to ATHIS and hold.

ATIS 126.8	CORPUS APP CON 120.9 348.725	CORPUS TOWER 119.4 257.8	GND CON 121.9 269.15	CLNC DEL 118.55
-----------------------------	---	---	---------------------------------------	----------------------------------



ELEV 46	D	TDZE 43
---------	----------	---------



2000	ATHIS	See planview for multiple IF locations.	SIWOC	
↑	△			
fr 312°				
RW31	GODLU	NIGBE	SIWOC	
	646	1200	2400	
			GP 3.00°	
			TCH 50	
	1.7 NM	1.7 NM	5.3 NM	
CATEGORY	A	B	C	D
RNP 0.14 DA*		303-1/2	260 (300-1/2)	
RNP 0.30 DA		384-5/8	341 (400-5/8)	

AUTHORIZATION REQUIRED

SC-3, 26 DEC 2024 to 23 JAN 2025

SC-3, 26 DEC 2024 to 23 JAN 2025