

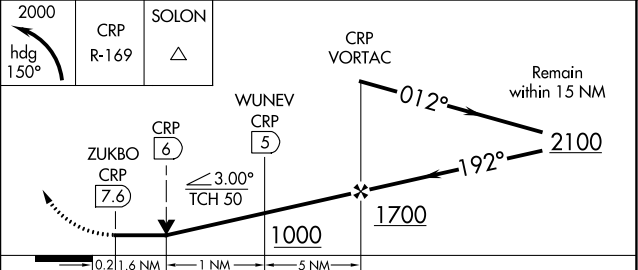
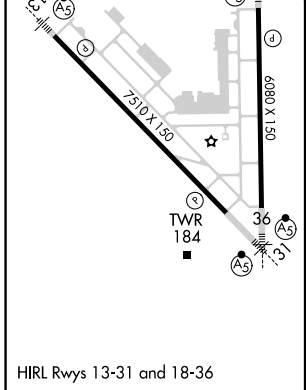
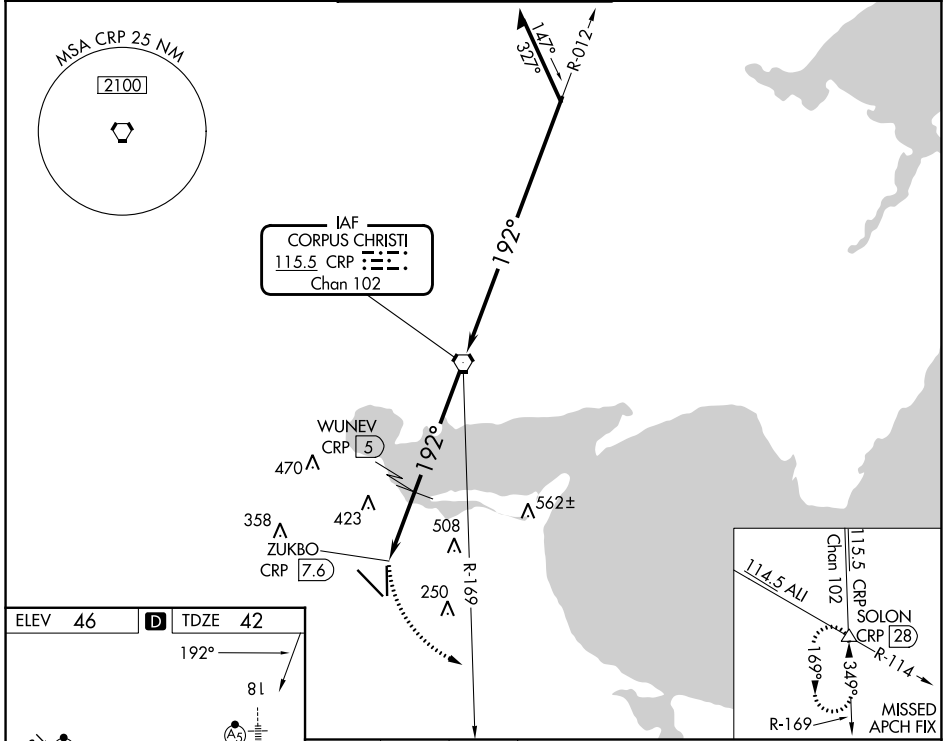
VORTAC CRP 115.5	APP CRS 192°	Rwy Idg TDZE Apt Elev	6080 42 46
Chan 102			

VOR or TACAN RWY 18

CORPUS CHRISTI INTL (CRP)

DME required.		MALSRL	MISSED APPROACH: Climbing left turn to 2000 on heading 150° and CRP VORTAC R-169 to SOLON INT/CRP 28 DME and hold.
Rwy 18 helicopter visibility reduction below 3/4 SM NA. Inop table does not apply.			

ATIS 126.8	CORPUS APP CON 120.9 348.725	CORPUS TOWER 119.4 257.8	GND CON 121.9 269.15	CLNC DEL 118.55
----------------------	--	------------------------------------	--------------------------------	---------------------------



CATEGORY	A	B	C	D	E
S-18	680-1	638 (700-1)	680-1 3/4	638 (700-1 3/4)	
CIRCLING	680-1 634 (700-1)	780-1 734 (800-1)	820-2 1/4 774 (800-2 1/4)	820-2 1/2 774 (800-2 1/2)	820-2 3/4 774 (800-2 3/4)

SC-3, 26 DEC 2024 to 23 JAN 2025

SC-3, 26 DEC 2024 to 23 JAN 2025