

WAAS CH 65639 W19A	APP CRS 184°	Rwy Idg TDZE 620 Apt Elev 620	4003
--	------------------------	---	-------------

RNAV (GPS) RWY 19

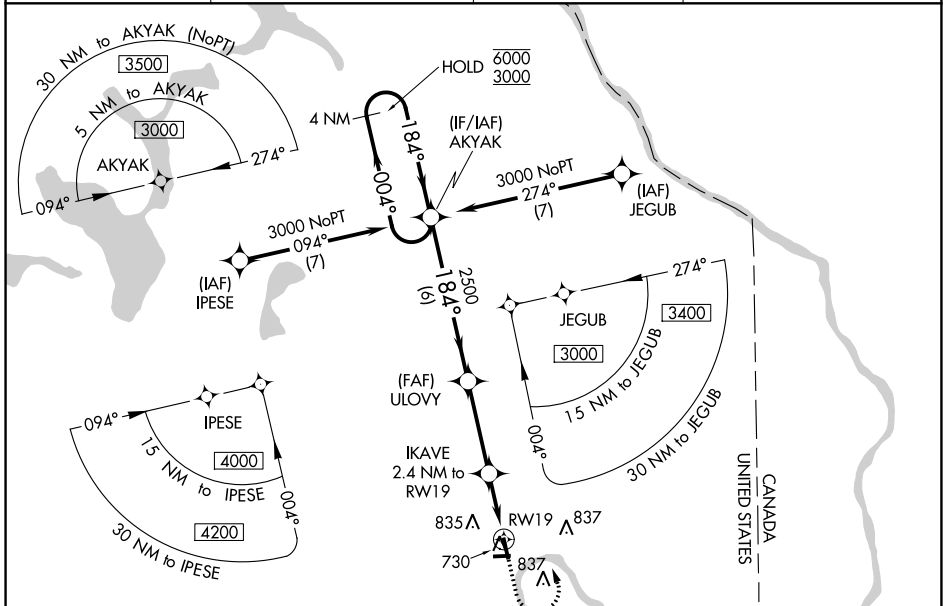
CARIBOU MUNI (CAR)

RNP APCH.

⚠ Baro-VNAV and VDP NA when using Presque Isle altimeter setting. Rwy 19 helicopter visibility reduction below 3/4 SM NA. For uncompensated Baro-VNAV systems, LNAV/VNAV NA below -21°C or above 54°C. Circling Rwy 1, 11, 29 NA at night. When local altimeter setting not received, use Presque Isle altimeter setting and increase all DAs 49 feet and all MDAs 60 feet. Increase LNAV Cats C, D visibility 1/8 SM and Circling Cat D visibility 1/4 SM.

MISSED APPROACH:
Climb to 1300 then climbing left turn to 3000 direct AKYAK and hold.

ASOS 135.125	BOSTON CENTER 124.75 239.05	CLNC DEL 124.75	UNICOM 122.8 (CTAF) 0
------------------------	---------------------------------------	---------------------------	---------------------------------



NE-1, 26 DEC 2024 to 23 JAN 2025

NE-1, 26 DEC 2024 to 23 JAN 2025

ELEV 620	TDZE 620
----------	----------

CATEGORY	A	B	C	D
LPV DA		870-1	250 (300-1)	
LNAV/VNAV DA		894-1	274 (300-1)	
LNAV MDA		980-1	360 (400-1)	
CIRCLING	1140-1	520 (600-1)	1140-1 1/2 520 (600-1 1/2)	1400-2 1/2 780 (800-2 1/2)

MIRL Rwy 1-19 and 11-29 0