

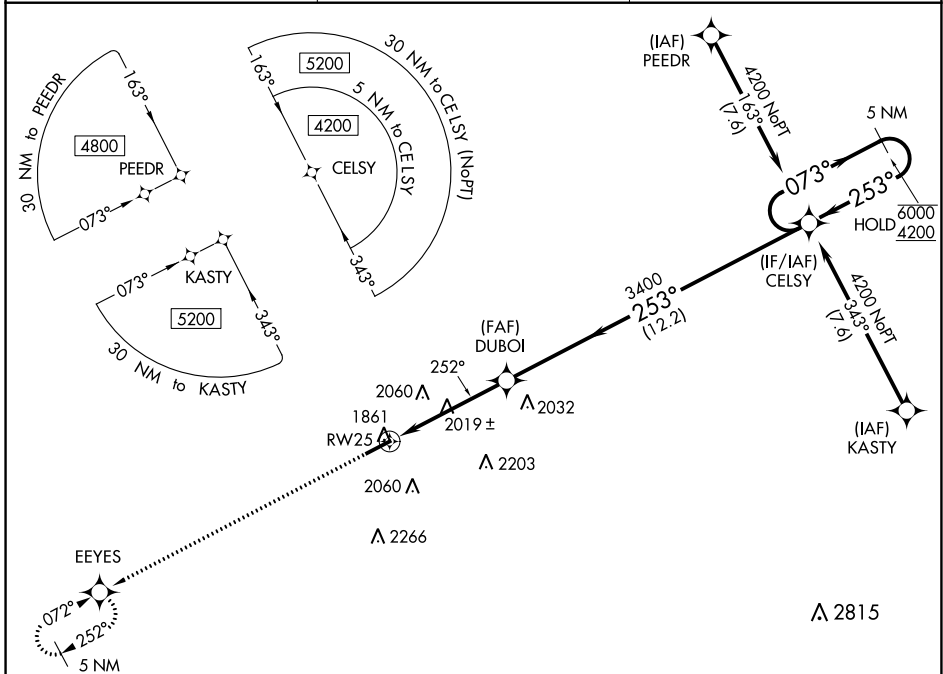
WAAS CH 97407 W25A	APP CRS 252°	Rwy Idg TDZE Apt Elev	5503 1817 1817
--	------------------------	-----------------------------	---

RNAV (GPS) RWY 25

DUBOIS RGNL (DUJ)

RNP APCH.	MALSR	MISSED APPROACH: Climb to 4200 direct EEYES and hold.
Circling NA for Cat D south of Rwy 7-25. For uncompensated Baro-VNAV systems, LNAV/VNAV NA below -21°C or above 54°C. For inop ALS increase LNAV Cat C/D visibility to 1½ SM.		

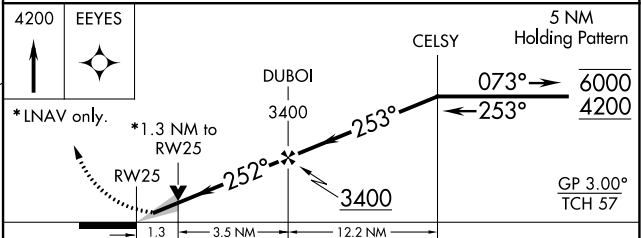
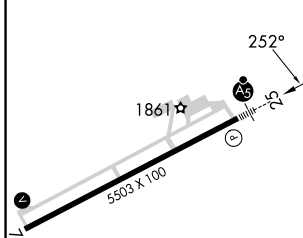
ASOS 119.025	CLEVELAND CENTER 126.725 291.65	UNICOM 123.0 (CTAF)
------------------------	---	-------------------------------



NE-4, 26 DEC 2024 to 23 JAN 2025

NE-4, 26 DEC 2024 to 23 JAN 2025

ELEV	1817		TDZE	1817
------	-------------	--	------	-------------



CATEGORY	A	B	C	D
LPV DA	2017-½ 200 (200-½)			
LNAV/VNAV DA	2140-½ 323 (400-½)			
LNAV MDA	2280-½ 463 (500-½)		2280-1 463 (500-1)	
CIRCLING	2320-1 503 (600-1)	2360-1 543 (600-1)	2380-1½ 563 (600-1½)	2400-2 583 (600-2)

HIRL Rwy 7-25
REIL Rwy 7