


LOC I-HUM	APP CRS	Rwy Idg	<b>6413</b>
<b>108.5</b>	<b>179°</b>	TDZE	<b>8</b>
		Apt Elev	<b>9</b>

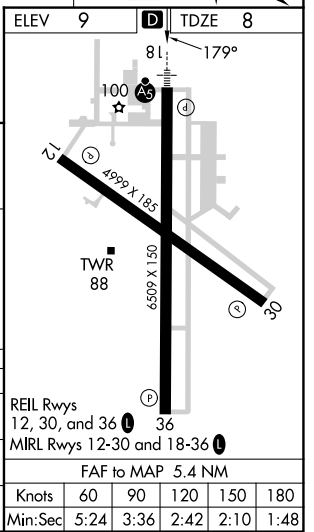
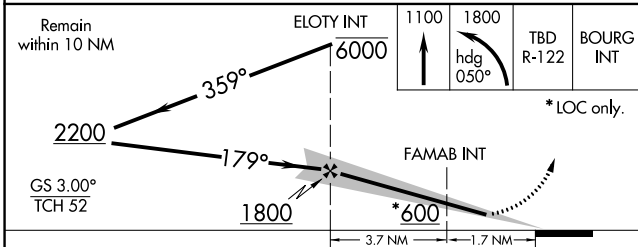
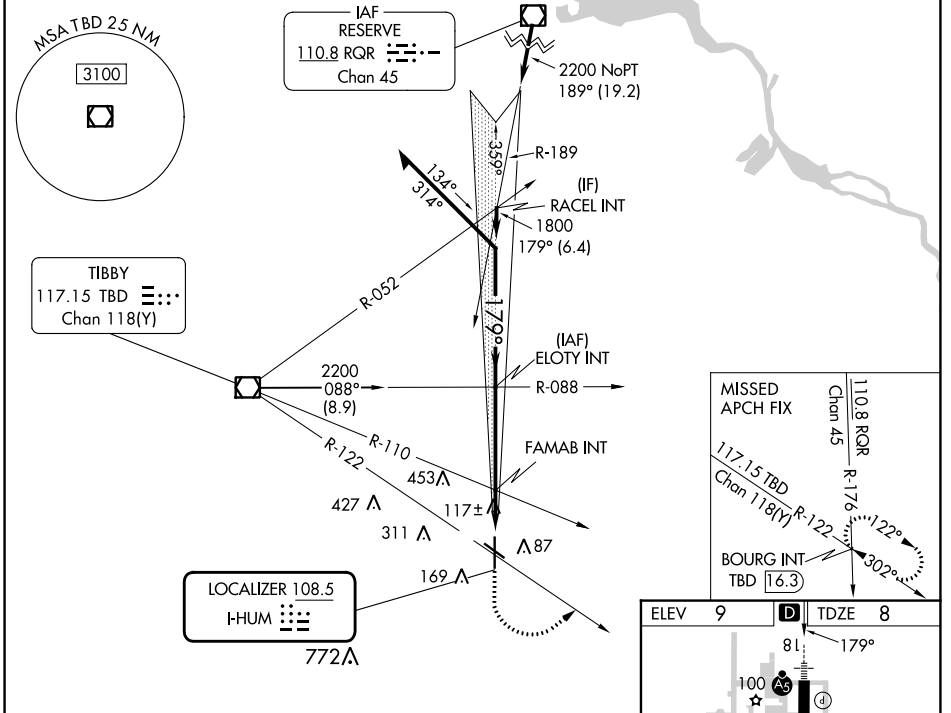
# ILS or LOC RWY 18

HOUMA-TERREBONNE (HUM)

**⚠** When local altimeter setting not received, use Louis Armstrong New Orleans Intl altimeter setting: increase DA to 285 feet; increase all MDA 80 feet and S-LOC 18 Cat C/D visibility ¼ SM and Circling Cat C/D visibility ¼ SM. For inop ALS increase S-LOC 18 Cat C/D visibility to 1 SM. For inop ALS when using Louis Armstrong New Orleans Intl altimeter setting increase S-ILS 18 all Cats visibility ⅓ SM.

**MALS R**  
  
**MISSED APPROACH:** Climb to 1100 then climbing left turn to 1800 on heading 050° and TBD VOR/DME R-122 to BOURG INT/TBD 16.3 DME and hold.

ATIS <b>120.25</b>	NEW ORLEANS APP CON <b>118.9 350.35</b>	HOUMA TOWER ★ <b>125.3 (CTAF) 0 346.3</b>	GND CON <b>123.875</b>	CLNC DEL <b>118.9</b> (When twr closed)	UNICOM <b>122.95</b>
-----------------------	--	--	---------------------------	---	-------------------------



CATEGORY	A	B	C	D
S-ILS 18	208-½ 200 (200-½)			
S-LOC 18	380-½ 372 (400-½)	380-⅝ 372 (400-⅝)		
<b>C</b> CIRCLING	480-1 471 (500-1)	760-2¼ 751 (800-2¼)		760-2½ 751 (800-2½)

SC-4, 26 DEC 2024 to 23 JAN 2025

SC-4, 26 DEC 2024 to 23 JAN 2025