

WAAS CH <b>77704</b> <b>W23A</b>	APP CRS <b>230°</b>	Rwy ldg <b>11498</b> TDZE <b>87</b> Apt Elev <b>93</b>
--	------------------------	--

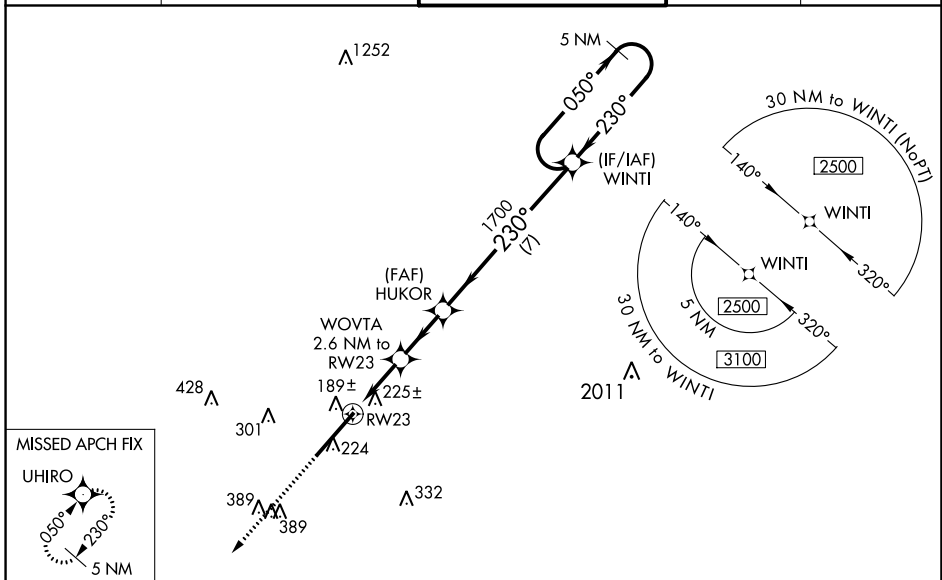
# RNAV (GPS) RWY 23

KINSTON RGNL JETPORT AT STALLINGS FLD (ISO)

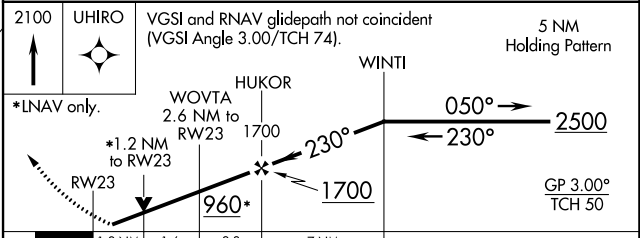
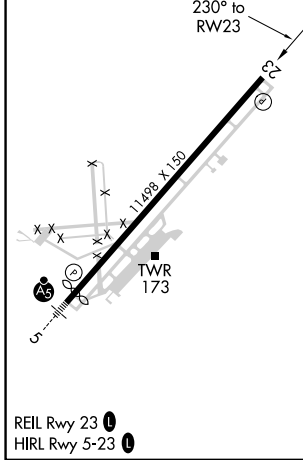
**⚠** Baro-VNAV NA when using Seymour Johnson AFB altimeter setting. For uncompensated Baro-VNAV systems, LNAV/VNAV NA below -15°C (5°F) or above 54°C (130°F). DME/DME RNP-0.3 NA. VDP NA with Seymour Johnson AFB altimeter setting. Rwy 23 helicopter visibility reduction below ¾ SM NA. When local altimeter setting not received, use Seymour Johnson AFB altimeter setting and increase LPV DA to 432, LNAV/VNAV DA to 413, and all MDA 60 feet. Increase LPV all Cats and LNAV Cats C and D visibility ¼ mile, and increase LNAV/VNAV all Cats and Circling Cat D visibility ¼ mile.

**⚠** MISSED APPROACH: Climb to 2100 direct UHIRO and hold.

AWOS-3 <b>132.75</b>	SEYMOUR JOHNSON APP CON * <b>127.3 273.6</b>	KINSTON TOWER * <b>120.6 (CTAF) 335.55</b>	GND CON <b>121.9</b>	UNICOM <b>122.95</b>
-------------------------	---	---	-------------------------	-------------------------



ELEV <b>93</b>	TDZE <b>87</b>
----------------	----------------



CATEGORY	A	B	C	D
LPV DA	390-1 303 (300-1)			
LNAV/VNAV DA	437-1½ 350 (400-1½)			
LNAV MDA	540-1	453 (500-1)	540-1¾	453 (500-1½)
<b>C</b> CIRCLING	580-1	487 (500-1)	700-1¾ 607 (700-1¾)	740-2 647 (700-2)

# RNAV (GPS) RWY 23

SE-2, 26 DEC 2024 to 23 JAN 2025

SE-2, 26 DEC 2024 to 23 JAN 2025