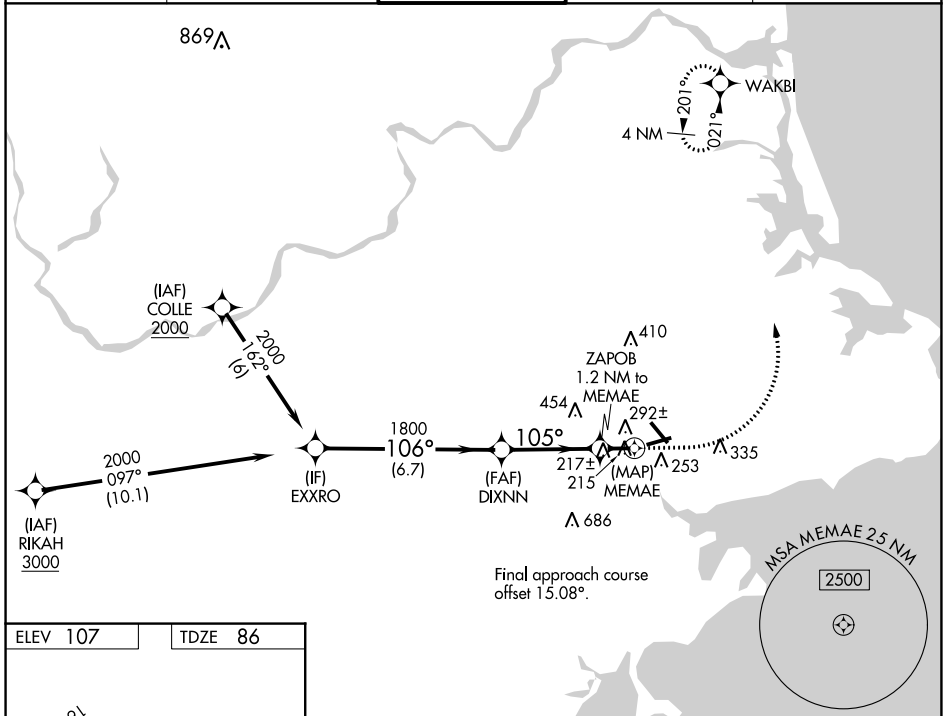


WAAS CH 65640 W09A	APP CRS 105°	Rwy Idg TDZE Apt Elev	4755 86 107
--	------------------------	-----------------------------	--

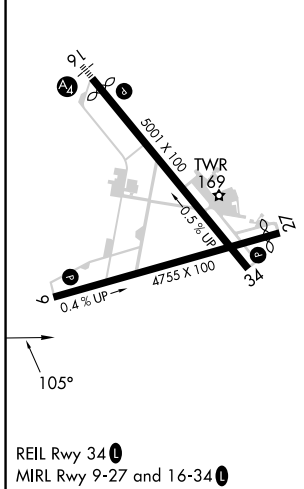
RNAV (GPS) RWY 9

BEVERLY RGNL (BVY)

RNP APCH - GPS.		MISSED APPROACH: Climb to 600 then climbing left turn to 2000 direct WAKBI and hold.		
<p>▼ Rwy 9 helicopter visibility reduction below 1 SM NA. ▲ Straight-in Rwy 9 NA at night, Circling Rwy 9 NA at night.</p>				
ATIS 119.2	BOSTON APP CON 124.4 279.6	BEVERLY TOWER★ 125.2 (CTAF) 0	GND CON 121.6	UNICOM 122.95



ELEV 107	TDZE 86
----------	---------



VGSI and descent angles not coincident (VGSI Angle 3.00/TCH 43).		600	2000	WAKBI
CATEGORY	A	B	C	D
LP MDA	480-1	394 (400-1)	480-1 $\frac{1}{8}$	394 (400-1 $\frac{1}{8}$)
LNAV MDA	560-1	474 (500-1)	560-1 $\frac{3}{8}$	474 (500-1 $\frac{3}{8}$)
CIRCLING	600-1	493 (500-1)	820-2 713 (800-2)	820-2 $\frac{1}{4}$ 713 (800-2 $\frac{1}{4}$)

NE-1, 26 DEC 2024 to 23 JAN 2025

NE-1, 26 DEC 2024 to 23 JAN 2025