

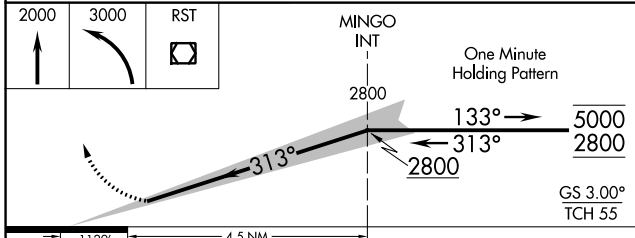
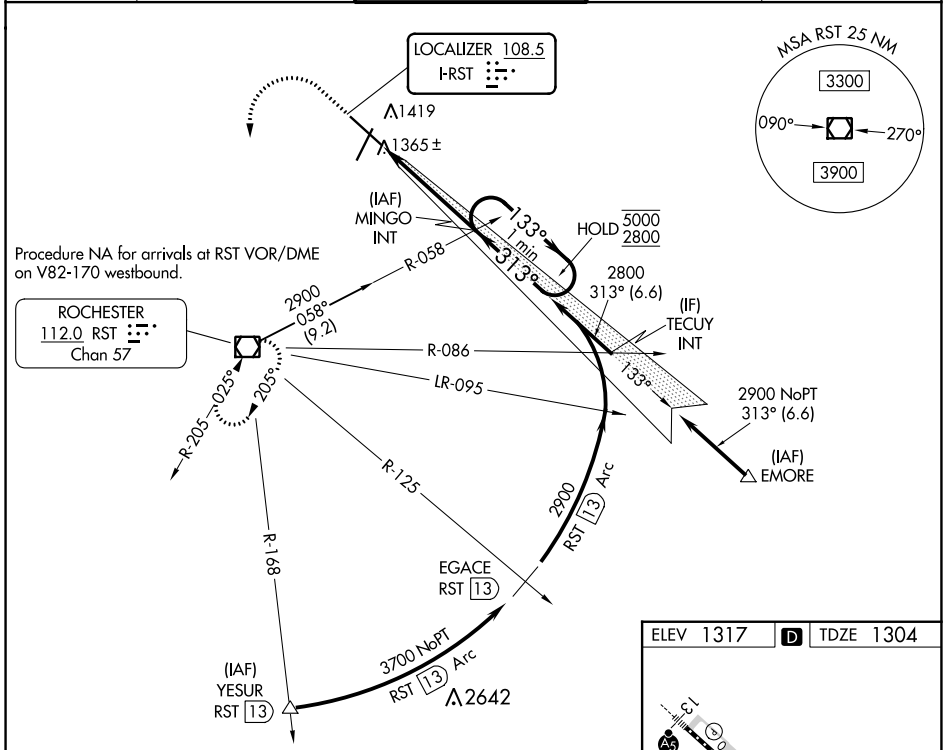
LOC I-RST 108.5	APP CRS 313°	Rwy Idg 9033
		TDZE 1304
		Apt Elev 1317

ILS Z RWY 31 (CAT II)

ROCHESTER INTL (RST)

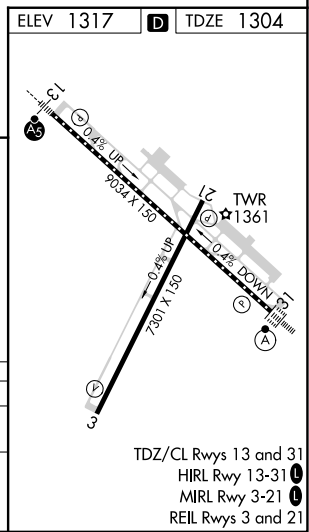
DME required for procedure entry at YESUR.		ALSF-2	MISSED APPROACH: Climb to 2000 then climbing left turn to 3000 direct RST VOR/DME and hold.	
ASR	Procedure NA when tower closed.			

ATIS 120.5	ROCHESTER APP CON* 119.8 251.125	ROCHESTER TOWER* 118.3 (CTAF) 257.8	GND CON 121.9	UNICOM 122.95
----------------------	--	---	-------------------------	-------------------------



CATEGORY	A	B	C	D
S-ILS 31	RA 104/12 100 DA 1404			

CATEGORY II ILS - SPECIAL AIRCREW & AIRCRAFT CERTIFICATION REQUIRED



NC-1, 26 DEC 2024 to 23 JAN 2025

NC-1, 26 DEC 2024 to 23 JAN 2025