

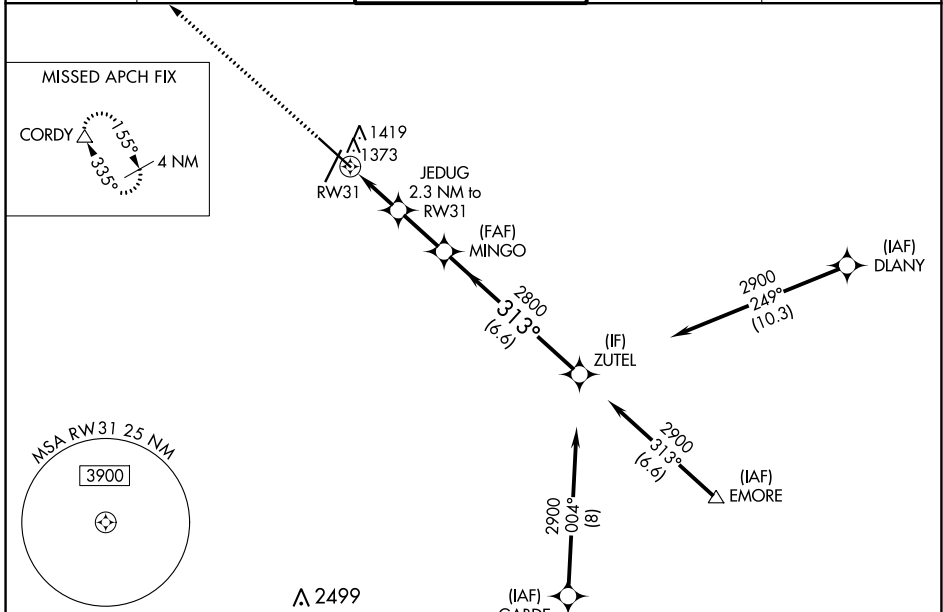
WAAS CH <b>49028</b> <b>W31A</b>	APP CRS <b>313°</b>	Rwy Idg TDZE Apt Elev	<b>9033</b> <b>1304</b> <b>1317</b>
--	------------------------	-----------------------------	---

# RNAV (GPS) RWY 31

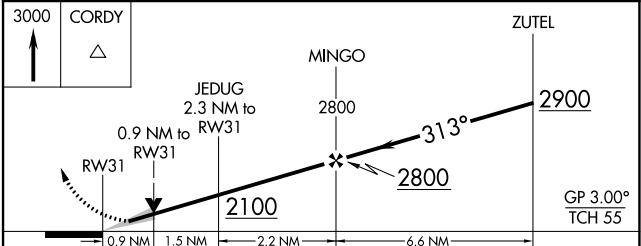
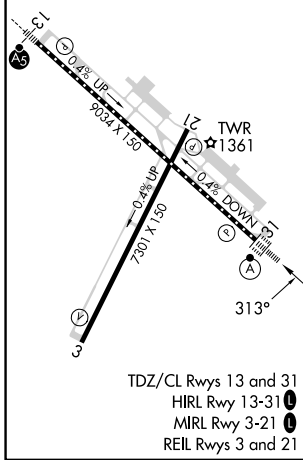
ROCHESTER INTL (RST)

RNP APCH - GPS. ASR For uncompensated Baro-VNAV systems, LNAV/VNAV NA below -20°C or above 54°C. For inop ALS, increase LNAV/VNAV all Cats visibility to RVR 4500.	ALSf-2 	MISSED APPROACH: Climb to 3000 direct CORDY and hold.
---	------------	---

ATIS <b>120.5</b>	ROCHESTER APP CON* <b>119.8 251.125</b>	ROCHESTER TOWER* <b>118.3 (CTAF) 257.8</b>	GND CON <b>121.9</b>	UNICOM <b>122.95</b>
----------------------	--	---	-------------------------	-------------------------



ELEV 1317	<b>D</b>	TDZE 1304
-----------	----------	-----------



CATEGORY	A	B	C	D
LPV DA	1504/18 200 (200-½)			
LNAV/VNAV DA	1579/24 275 (300-½)			
LNAV MDA	1640/24	336 (400-½)	1640/26	336 (400-½)
<b>C</b> CIRCLING	1720-1 403 (500-1)	1780-1 463 (500-1)	1900-1½ 583 (600-1½)	1900-2 583 (600-2)

NC-1, 26 DEC 2024 to 23 JAN 2025

NC-1, 26 DEC 2024 to 23 JAN 2025