

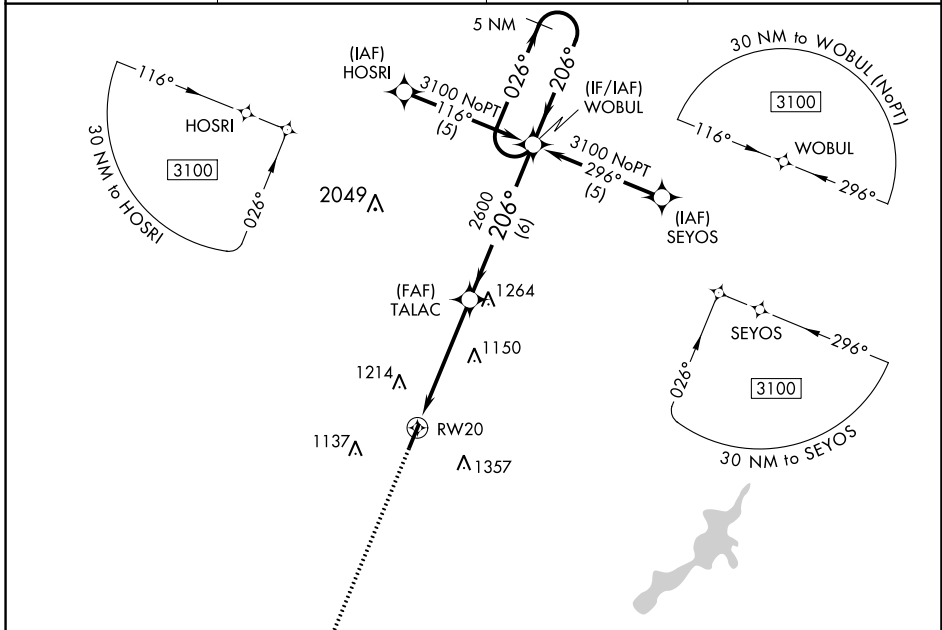
WAAS CH <b>93601</b> <b>W20A</b>	APP CRS <b>206°</b>	Rwy Idg TDZE Apt Elev	<b>4410</b> <b>955</b> <b>957</b>
--	------------------------	-----------------------------	---

# RNAV (GPS) RWY 20

DAYTON/WRIGHT BROTHERS (MGY)

RNP APCH.	MALS	MISSED APPROACH: Climb to 3100 direct SOVVO and hold.
<p>▼ Inoperative table does not apply. When local altimeter setting not received, use James M Cox Dayton Intl altimeter setting and increase all DAs/MDAs 60 feet and Circling Cat C/D visibility ¼ SM. Rwy 20 helicopter visibility reduction below ¾ SM NA. VDP NA when using James M Cox Dayton Intl altimeter setting.</p>		

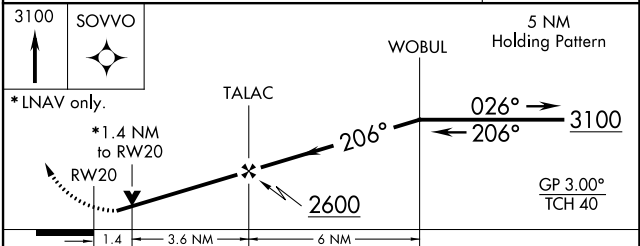
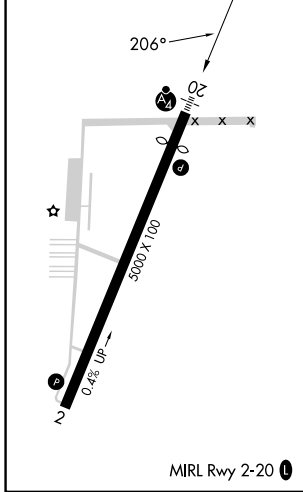
ASOS <b>118.375</b>	COLUMBUS APP CON <b>118.85 269.275</b>	CLNC DEL <b>119.4</b>	UNICOM <b>122.8 (CTAF)</b>
------------------------	---	--------------------------	-------------------------------



EC-2, 26 DEC 2024 to 23 JAN 2025

EC-2, 26 DEC 2024 to 23 JAN 2025

ELEV 957	<b>D</b>	TDZE 955
----------	----------	----------



CATEGORY	A	B	C	D
LPV DA	1294-1 ¼ 339 (400-1 ¼)			
LNAV MDA	1440-1	485 (500-1)	1440-1 ½ 485 (500-1 ½)	1440-1 ½ 485 (500-1 ½)
<input checked="" type="checkbox"/> CIRCLING	1480-1 ¼ 523 (600-1 ¼)	1520-1 ¼ 563 (600-1 ¼)	1660-2 703 (800-2)	1660-2 ¼ 703 (800-2 ¼)