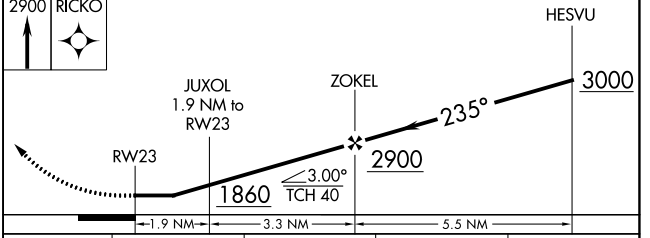
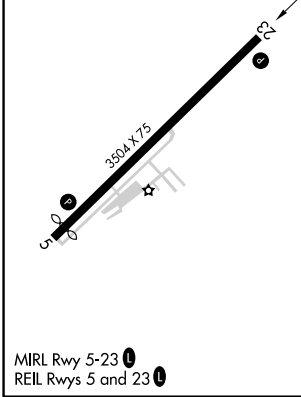
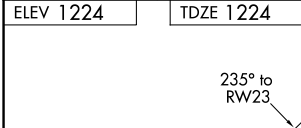
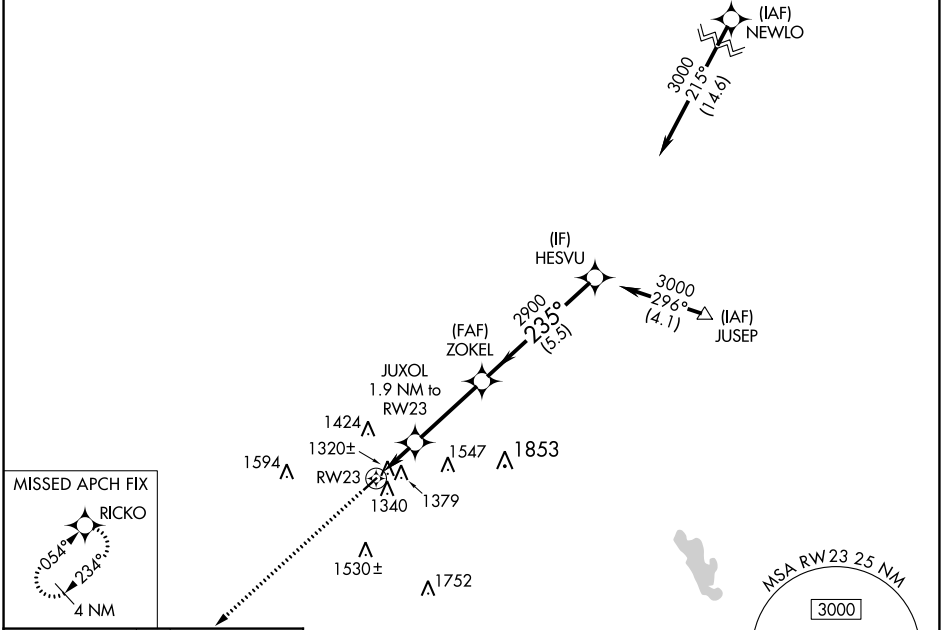


WAAS CH 57923 W23A	APP CRS 235°	Rwy Idg TDZE Apt Elev	3504 1224 1224
--	------------------------	-----------------------------	---

RNAV (GPS) RWY 23

GALLION MUNI (GQQ)

<p>NA Helicopter visibility reduction below $\frac{3}{4}$ SM NA. DME/DME RNP-0.3 NA. Use Mansfield altimeter setting. Circling Rwy 5 NA at night.</p>	<p>MISSED APPROACH: Climb to 2900 direct RICKO and hold.</p>	
<p>CLEVELAND APP CON ★ 128.35 360.65</p>	<p>CLNC DEL 126.8</p>	<p>UNICOM 122.8 (CTAF) 1</p>



CATEGORY	A	B	C	D
LP MDA	1620-1	396 (400-1)	1620-1 $\frac{1}{8}$ 396 (400-1 $\frac{1}{8}$)	NA
LNAV MDA	1760-1	536 (600-1)	1760-1 $\frac{1}{8}$ 536 (600-1 $\frac{1}{8}$)	NA
CIRCLING	1800-1 576 (600-1)	1960-1 736 (800-1)	1960-2 736 (800-2)	NA

EC-2, 26 DEC 2024 to 23 JAN 2025

EC-2, 26 DEC 2024 to 23 JAN 2025