

VORTAC MFD 108.8 Chan 25	APP CRS 224°	Rwy Idg TDZE Apt Elev 3504 1224 1224
--	------------------------	--

VOR RWY 23

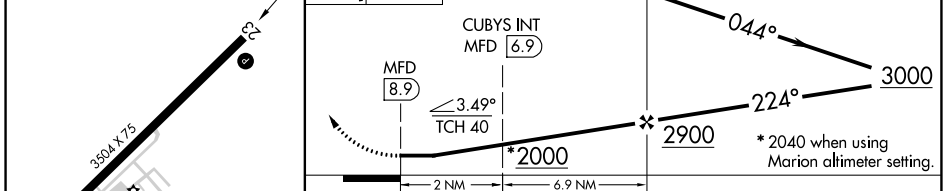
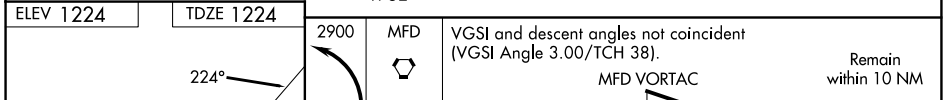
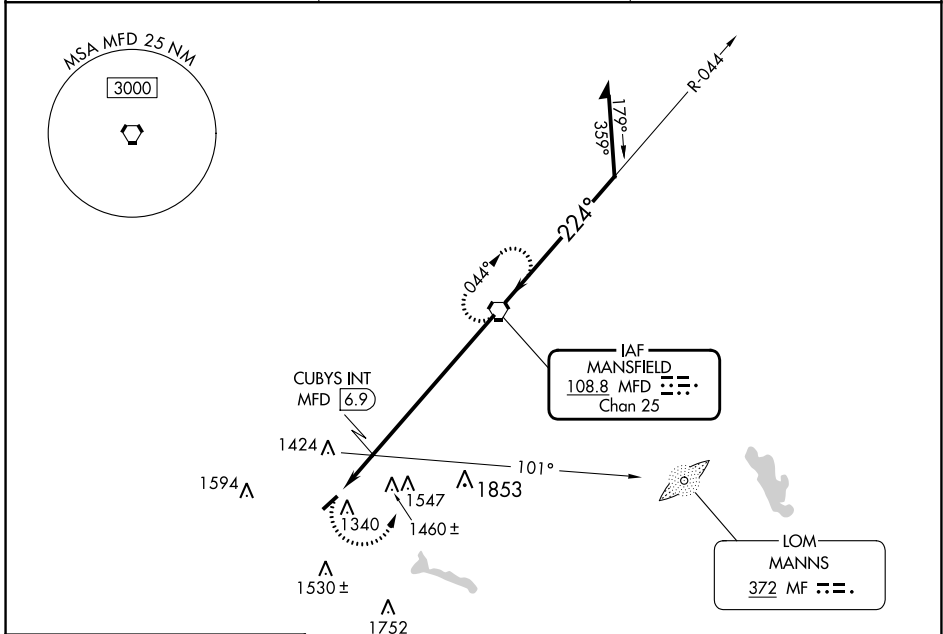
GALLION MUNI (GQQ)

RADAR required for procedure entry.

Procedure NA at night. Use Mansfield altimeter setting; when not received, use Marion altimeter setting and increase all MDAs 40 feet, increase CUBYS fix minimums S-23 all Cats visibility 1/8 SM and Circling Cat C 1/4 SM. Rwy 23 helicopter visibility reduction below 1 SM NA.

MISSED APPROACH: Climbing left turn to 2900 direct MFD VORTAC and hold.

CLEVELAND APP CON * 128.35 360.65	CLNC DEL 126.8	UNICOM 122.8 (CTAF) 0
---	--------------------------	--



CATEGORY	A		B		C		D
	1	2	1	2	1	2	
S-23	2000-1	776 (800-1)	2000-1 1/4	776 (800-1 1/4)	2000-2 1/2	776 (800-2 1/2)	NA
CIRCLING	2000-1	776 (800-1)	2000-1 1/4	776 (800-1 1/4)	2000-2 1/2	776 (800-2 1/2)	NA
CUBYS FIX MINIMUMS							
S-23	1760-1	536 (600-1)	1760-1 5/8	536 (600-1 5/8)			NA
CIRCLING	1800-1	576 (600-1)	1960-1	736 (800-1)	1960-2	736 (800-2)	NA

REIL Rwys 5 and 23 **0**

MIRL Rwy 5-23 **0**

FAF to MAP 8.9 NM

Knots	60	90	120	150	180
Min:Sec	8:54	5:56	4:27	3:34	2:58

EC-2, 26 DEC 2024 to 23 JAN 2025

EC-2, 26 DEC 2024 to 23 JAN 2025