

VORTAC RBV <b>113.8</b> Chan <b>85</b>	APP CRS <b>288°</b>	Rwy Idg <b>3975</b> TDZE <b>118</b> Apt Elev <b>118</b>
--	------------------------	---

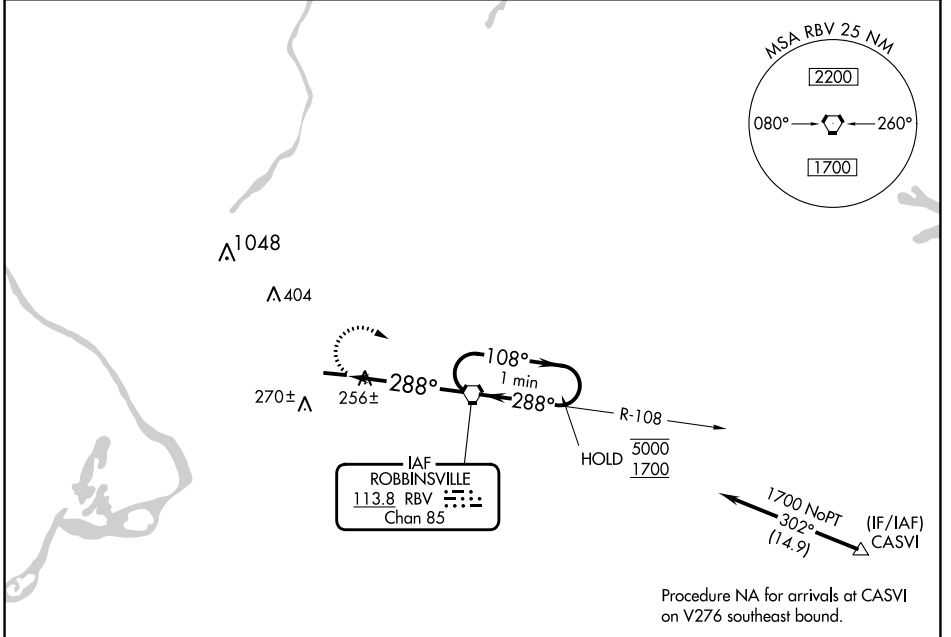
# VOR RWY 29

TRENTON-ROBBINSVILLE (N87)

**Procedure NA at night.**  
**NA** Rwy 29 helicopter visibility reduction below 1 SM NA.  
 Use Wrightstown altimeter setting.

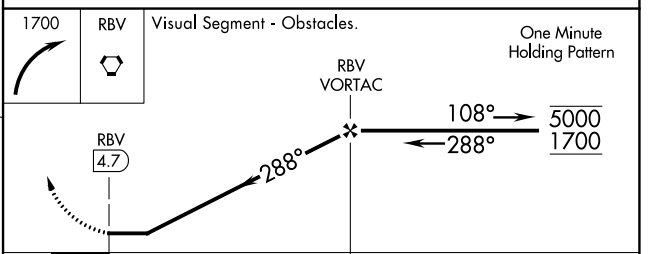
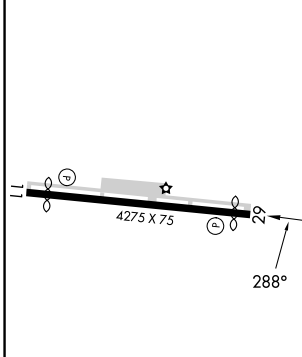
**MISSED APPROACH:** Climbing right turn to 1700 direct RBV VORTAC and hold.

MC GUIRE APP CON <b>126.475 363.8</b>	UNICOM <b>123.0</b> (CTAF)	<b>123.3</b> <b>0</b>
--	-------------------------------	-----------------------



Procedure NA for arrivals at CASVI on V276 southeast bound.

ELEV <b>118</b>	TDZE <b>118</b>
-----------------	-----------------



MIRL Rwy 11-29 <b>0</b>	FAF to MAP 4.7 NM					
Knots	60	90	120	150	180	
Min:Sec	4:42	3:08	2:21	1:53	1:34	
CATEGORY	A		B		C	D
S-29	620-1		502 (600-1)		620-1 3/8 502 (600-1 3/8)	
CIRCLING	680-1		562 (600-1)		680-1 1/2 562 (600-1 1/2) 760-2 642 (700-2)	

NE-2, 26 DEC 2024 to 23 JAN 2025

NE-2, 26 DEC 2024 to 23 JAN 2025