

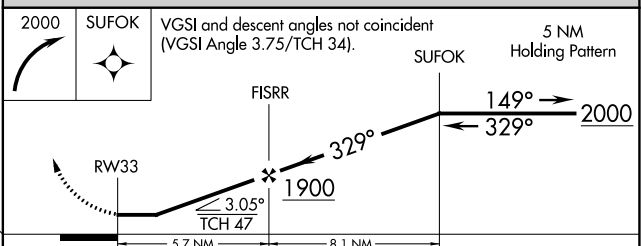
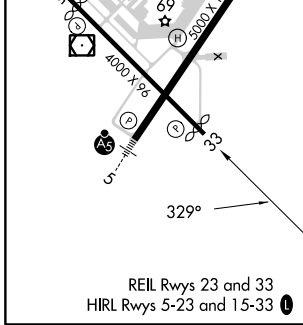
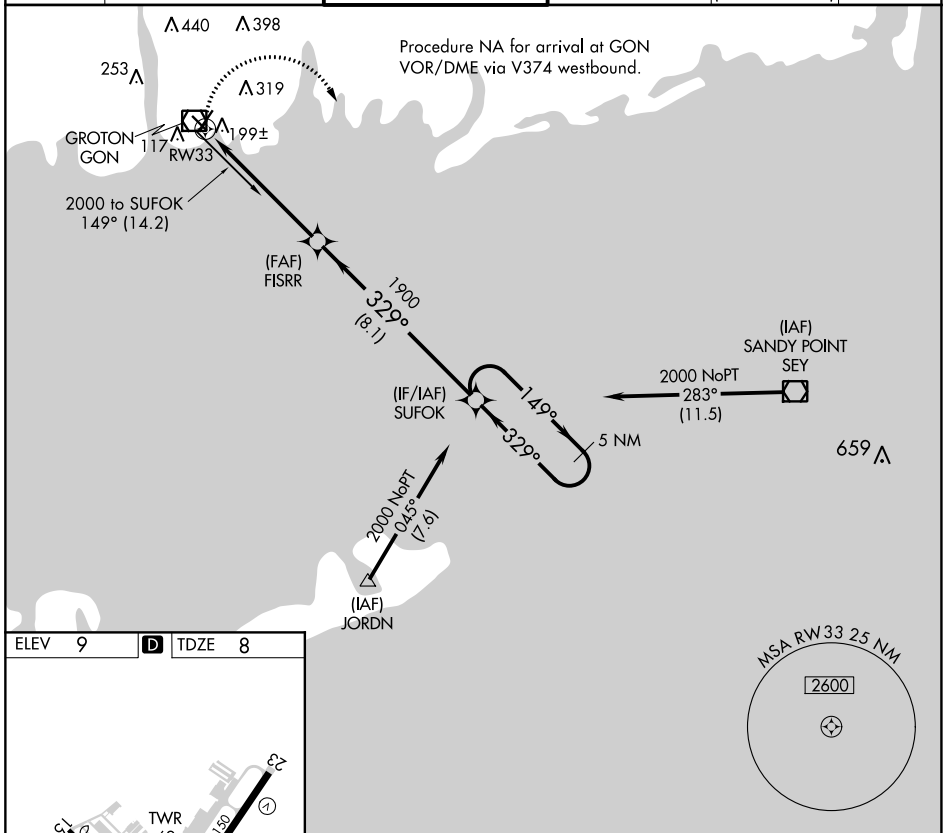
APP CRS	Rwy Idg	<b>3666</b>
<b>329°</b>	TDZE	<b>8</b>
	Apt Elev	<b>9</b>

# RNAV (GPS) RWY 33

GROTON-NEW LONDON (GON)

RNP APCH.		MISSED APPROACH: Climbing right turn to 2000 direct SUFOK and hold.			
▼ Rwy 33 helicopter visibility reduction below ¼ SM NA.					

ATIS <b>127.0</b>	PROVIDENCE APP CON ★ <b>125.75 319.2</b>	GROTON TOWER ★ <b>125.6 (CTAF) 236.775</b>	GND CON <b>121.65 236.775</b>	CLNC DEL <b>119.85</b> <small>(when twr closed)</small>	CLNC DEL <b>121.65</b>
----------------------	---	---	----------------------------------	---	---------------------------



CATEGORY	A	B	C	D
LNAV MDA	460-1	452 (500-1)	460-1¼ 452 (500-1¼)	460-1½ 452 (500-1½)

NE-1, 26 DEC 2024 to 23 JAN 2025

NE-1, 26 DEC 2024 to 23 JAN 2025