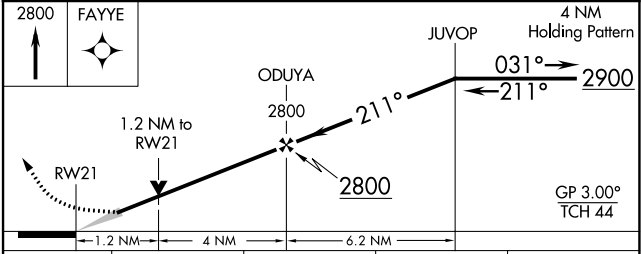
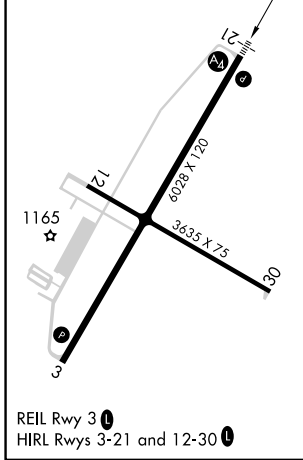
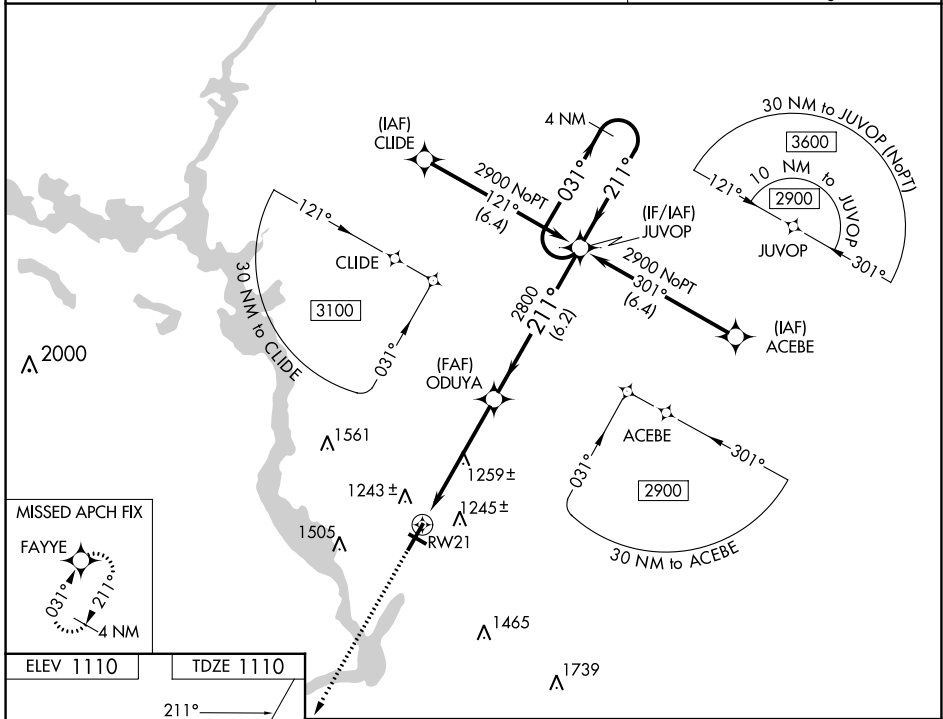


WAAS CH 86511 W21A	APP CRS 211°	Rwy Idg TDZE 1110 Apt Elev 1110	6028
--	------------------------	---	-------------

RNAV (GPS) RWY 21

STEVENS POINT MUNI (STE)

RNP APCH - GPS.		MALS	MISSED APPROACH: Climb to 2800 direct FAYYE and hold.
<p>⚠ For uncompensated Baro-VNAV systems, LNAV/VNAV NA below -17°C or above 54°C. Inop table does not apply to LPV all Cats. For inop ALS, increase LNAV Cat C and D visibility to 1½ SM.</p>			
AWOS-3 119.275	MINNEAPOLIS CENTER 124.4 317.7	UNICOM 122.7 (CTAF)	



CATEGORY	A	B	C	D
LPV DA		1360-¾	250 (300-¾)	
LNAV/VNAV DA		1457-¾	347 (400-¾)	
LNAV MDA	1520-¾	410 (500-¾)	1520-1	410 (500-1)
CIRCLING	1580-1 470 (500-1)	1600-1 490 (500-1)	1860-2¼ 750 (800-2¼)	1860-2½ 750 (800-2½)

EC-3, 26 DEC 2024 to 23 JAN 2025

EC-3, 26 DEC 2024 to 23 JAN 2025