

LOC I-CSV <b>109.1</b>	APP CRS <b>255°</b>	Rwy Idg TDZE Apt Elev	<b>5423</b> <b>1871</b> <b>1882</b>
---------------------------	------------------------	-----------------------------	---

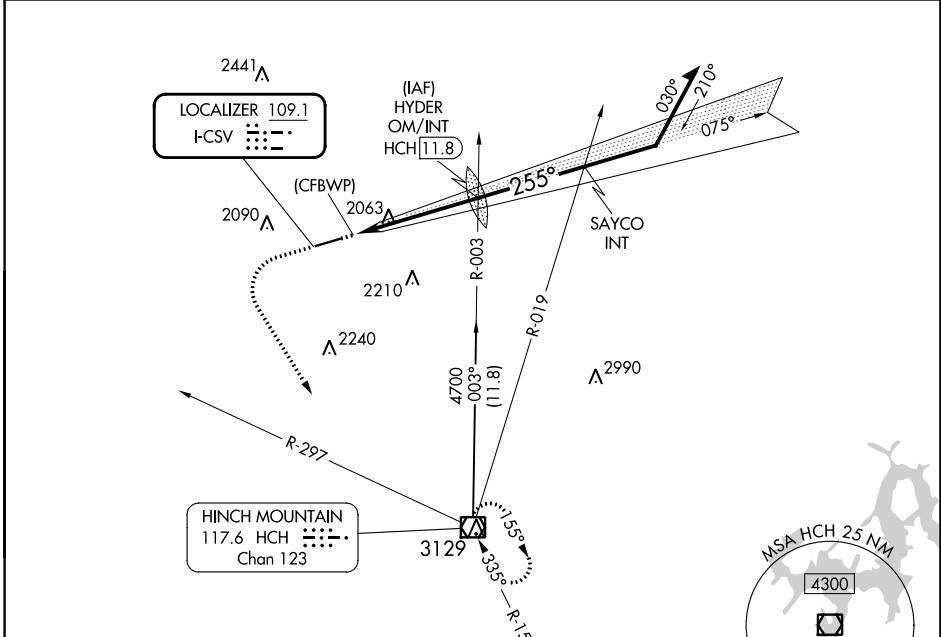
# ILS Z or LOC Z RWY 26

CROSSVILLE MEML-WHITSON FLD (CSV)

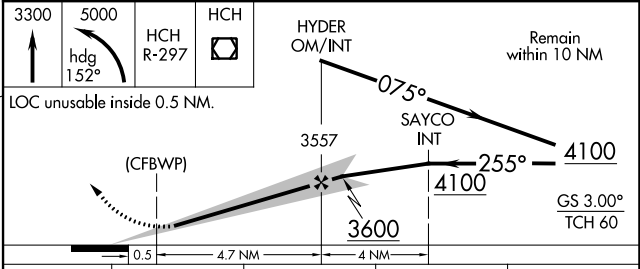
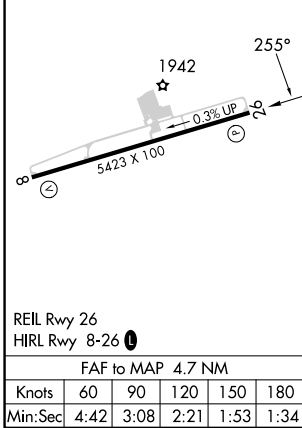
**Autopilot coupled approach NA below 2500.**

**MISSED APPROACH:** Climb to 3300 then climbing left turn to 5000 on heading 152° and HCH VOR/DME R-297 to HCH VOR/DME and hold.

ASOS <b>120.625</b>	ATLANTA CENTER <b>133.6 254.3</b>	UNICOM <b>122.7 (CTAF)</b>
------------------------	--------------------------------------	-------------------------------



ELEV 1882	TDZE 1871
-----------	-----------



CATEGORY	A	B	C	D
S-ILS 26	2121- <sup>3</sup> / <sub>4</sub> 250 (300- <sup>3</sup> / <sub>4</sub> )			
S-LOC 26	2440-1	569 (600-1)	2440-1 <sup>5</sup> / <sub>8</sub>	569 (600-1 <sup>5</sup> / <sub>8</sub> )
<input checked="" type="checkbox"/> CIRCLING	2440-1	558 (600-1)	2440-1 <sup>5</sup> / <sub>8</sub>	2540-2 658 (700-2)

SE-1, 26 DEC 2024 to 23 JAN 2025

SE-1, 26 DEC 2024 to 23 JAN 2025