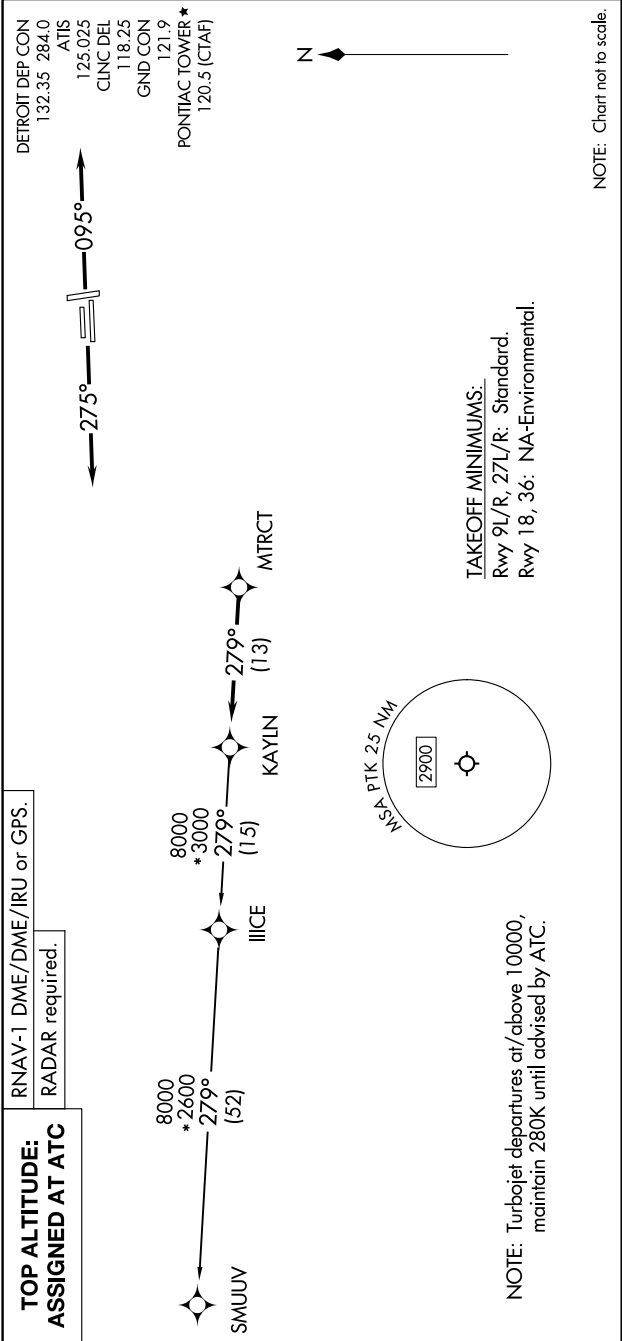


EC-1, 26 DEC 2024 to 23 JAN 2025



DEPARTURE ROUTE DESCRIPTION

TAKEOFF RUNWAYS 9L/R: Climb on heading 095° or as assigned by ATC, thence....
TAKEOFF RUNWAYS 27L/R: Climb on heading 275° or as assigned by ATC, thence....

....for RADAR vectors to MTRCT, then on track 279° to KAYLN, then on (transition). Maintain ATC assigned altitude, expect filed altitude 10 minutes after departure.

SMUUV TRANSITION (KAYLN3.SMUUV):

EC-1, 26 DEC 2024 to 23 JAN 2025