

WAAS CH 58110 W36A	APP CRS 004°	Rwy Idg TDZE Apt Elev	6347 80 90
--	------------------------	-----------------------------	---------------------------------------

RNAV (GPS) RWY 36

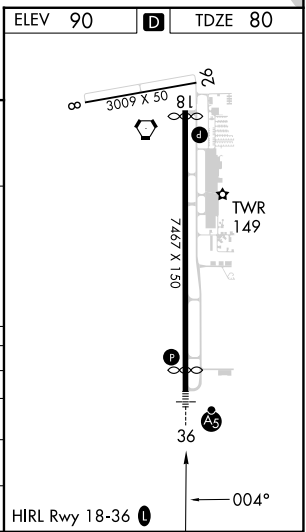
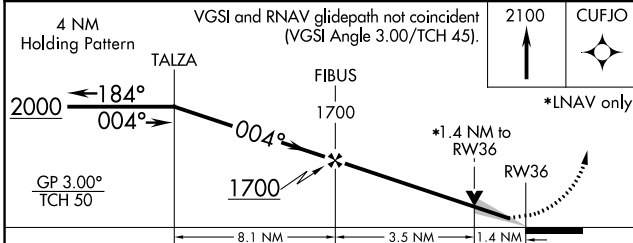
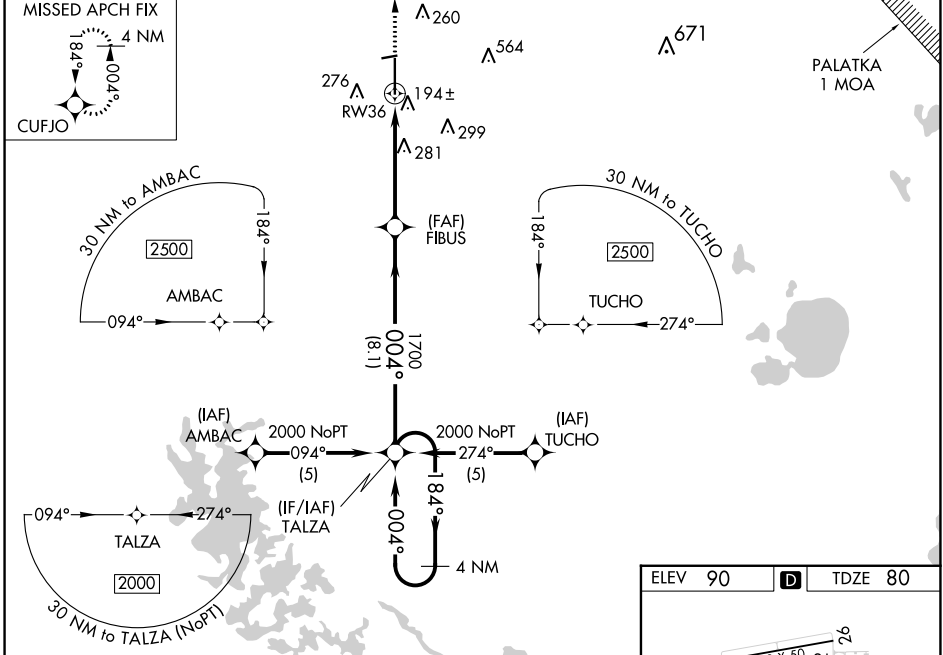
OCALA INTL-JIM TAYLOR FLD (OCF)

⚠ For uncompensated Baro-VNAV systems, LNAV/VNAV NA below -15°C (5°F) or above 48°C (118°F). DME/DME RNP-0.3 NA. When local altimeter setting not received, use Gainesville altimeter setting: Increase LPV DA to 361 feet, increase LNAV/VNAV DA to 644 feet and all MDAs 100 feet; increase LNAV/VNAV all Cats and LNAV visibility Cats C/D ¼ SM, increase Circling visibility Cat C ½ SM and Cat D ¼ SM. VDP and Baro-VNAV NA when using Gainesville altimeter setting. Inop table does not apply to LPV when using local altimeter setting. For inop MALSRS, increase LNAV Cats A and B visibility to 1 mile. For inop MALSRS when using Gainesville altimeter setting, increase LNAV Cats A and B visibility to 1 mile.

MALSRS

MISSED APPROACH:
Climb to 2100 direct CUFJO and hold.

ATIS 128.125	JACKSONVILLE APP CON 118.6 251.15	OCALA TOWER * 119.25 (CTAF) 0	GND CON 121.4
-------------------------------	--	--	--------------------------------



CATEGORY	A	B	C	D
LPV DA	280-¾		200 (200-¾)	
LNAV/VNAV DA	563-1¼		483 (500-1¼)	
LNAV MDA	540-¾		460 (500-¾)	
CIRCLING	600-1		510 (600-1)	
			760-1¾	
			670 (700-1¾)	
			920-2¾	
			830 (900-2¾)	

SE-3, 26 DEC 2024 to 23 JAN 2025

SE-3, 26 DEC 2024 to 23 JAN 2025