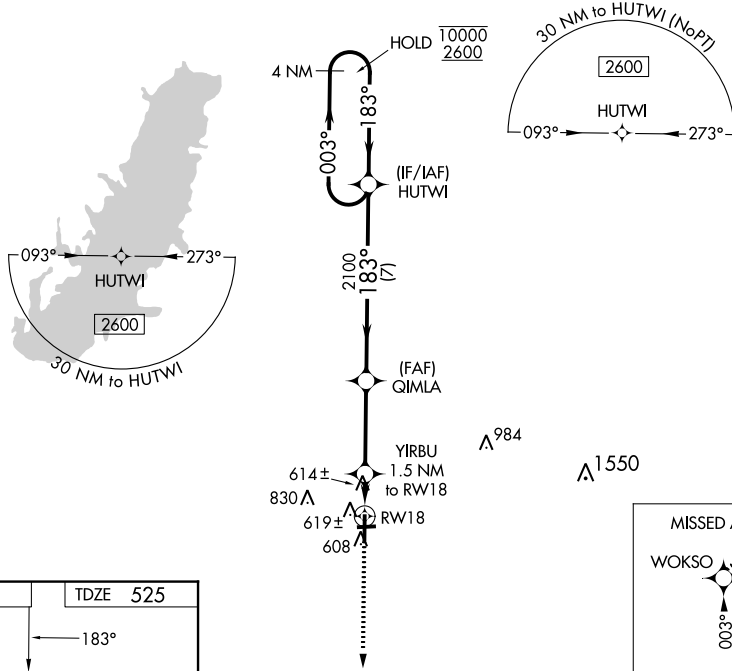


WAAS CH <b>77728</b> <b>W18A</b>	APP CRS <b>183°</b>	Rwy Idg TDZE Apt Elev	<b>5001</b> <b>525</b> <b>534</b>
--	------------------------	-----------------------------	---

# RNAV (GPS) RWY 18

CENTRALIA MUNI (ENL)

RNP APCH. ▼ Rwy 18 helicopter visibility reduction below 3/4 SM NA. Circling Rwy 9, 27 NA at night.		MISSED APPROACH: Climb to 2600 direct WOKSO and hold.
AWOS-3PT <b>121.125</b>	KANSAS CITY CENTER <b>127.7 351.825</b>	UNICOM <b>122.8 (CTAF) 0</b>



EC-3, 26 DEC 2024 to 23 JAN 2025

EC-3, 26 DEC 2024 to 23 JAN 2025

ELEV 534	TDZE 525
----------	----------

MIRL Rwy 9-27 and 18-36  
REIL Rwy 18 and 36

2600 WOKSO	4 NM Holding Pattern			
YIRBU 1.5 NM to RW18	QIMLA	HUTWI	0003° → 10000 ← 183° 2600	
1 NM to RW18	3.00° TCH 45	2100	← 183°	
1 NM	0.5 NM	3.3 NM	7 NM	
CATEGORY	A	B	C	D
LP MDA	880-1		355 (400-1)	
LNAV MDA	900-1		375 (400-1)	
☑ CIRCLING	980-1 446 (500-1)	1000-1 466 (500-1)	1180-1 <sup>3/4</sup> 646 (700-1 <sup>3/4</sup> )	1180-2 646 (700-2)