

LOC/DME I-LHJ 111.55	APP CRS 201°	Rwy Idg TDZE Apt Elev	8000 871 871
Chan 52 (Y)			

ILS RWY 20 (CAT II)

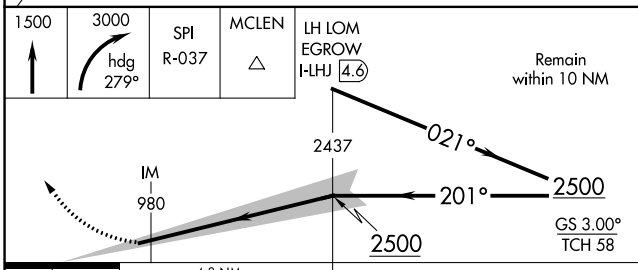
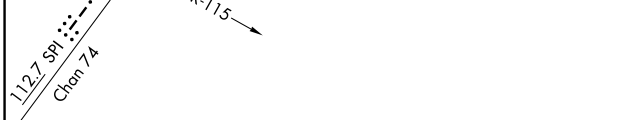
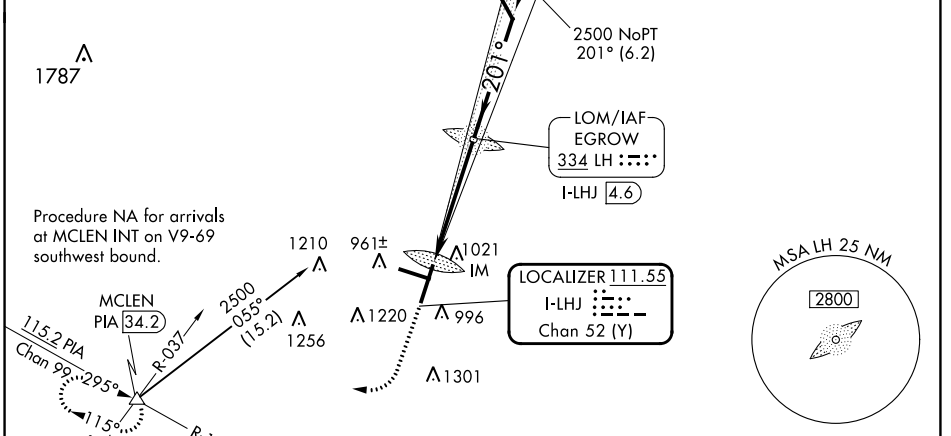
CENTRAL IL RGNL/BLOOMINGTON-NORMAL (BMI)

RADAR required for procedure entry at OLIDE.		ALSIF-2 	MISSED APPROACH: Climb to 1500 then climbing right turn to 3000 on heading 279° and SPI VORTAC R-037 to MCLEN INT/PIA 34.2 DME and hold, continue climb-in-hold to 3000.
Procedure NA when tower closed.			

ATIS 119.575	SAINT LOUIS APP CON 128.725 256.9	BLOOMINGTON TOWER ★ 124.6 (CTAF) 269.575	GND CON 121.65	UNICOM 122.95
------------------------	---------------------------------------------	----------------------------------------------------	--------------------------	-------------------------

ALTERNATE MISSED APCH FIX

LOM
EGROW
I-LHJ **4.6**
LH : : : :
334



CATEGORY	A	B	C	D
S-ILS-20	RA 122/12 100 DA 971			

CATEGORY II ILS - SPECIAL AIRCREW & AIRCRAFT CERTIFICATION REQUIRED

ELEV 871	D	TDZE 871
----------	----------	----------

916 20 29

6525 X 150 8000 X 150

TWR 972

TDZ/CL Rwy 20
HIRL Rwy 2-20 and 11-29

EC-3, 26 DEC 2024 to 23 JAN 2025

EC-3, 26 DEC 2024 to 23 JAN 2025