

LOC/DME I-LHJ 111.55 Chan 52(Y)	APP CRS 201°	Rwy Idg 8000 TDZE 871 Apt Elev 871
---	------------------------	---

ILS or LOC RWY 20

CENTRAL IL RGNL/BLOOMINGTON-NORMAL (BMI)

ADF or DME or RADAR required for LOC only.
RADAR required for procedure entry at OLIDE.

⚠ VDP NA when using PIA altimeter setting. When local altimeter setting not received, use PIA altimeter setting: increase S-ILS 20 DA to 1187 feet and all visibilities to RVR 2400; increase all MDAs 120 feet and S-LOC 20 visibility Cats C and D to RVR 5500 and Circling visibility Cats C and D ¼ SM. For inop ALS when using PIA altimeter setting, increase S-ILS 20 all Cats visibility to RVR 4500 and S-LOC 20 Cats C and D visibility to 1¾ SM.

ALSF-2

MISSED APPROACH: Climb to 1500 then climbing right turn to 3000 on heading 279° and SPI VORTAC R-037 to MCLEN INT/PIA 34.2 DME and hold, continue climb-in-hold to 3000.

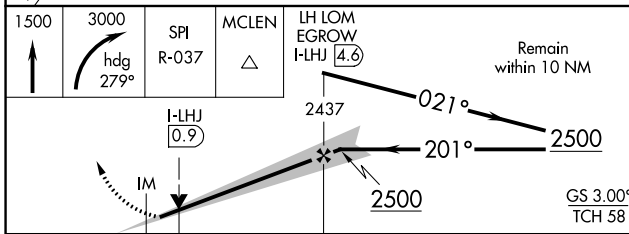
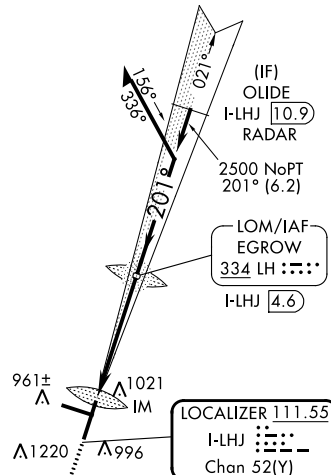
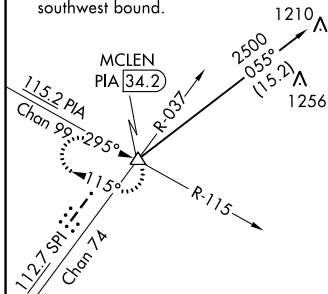
ATIS 119.575	SAINT LOUIS APP CON 128.725 256.9	BLOOMINGTON TOWER* 124.6 (CTAF) 269.575	GND CON 121.65	UNICOM 122.95
------------------------	---	---	--------------------------	-------------------------

ALTERNATE MISSED APCH FIX

LOM
EGROW
I-LHJ **4.6**
LH : : : :
334

1787 **Δ**

Procedure NA for arrivals at MCLEN INT on V6-69 southwest bound.



CATEGORY	A	B	C	D
S-ILS 20	1071/18		200 (200-½)	
S-LOC 20	1260/24	389 (400-½)	1260/35	389 (400-¾)
C CIRCLING	1340-1	469 (500-1)	1620-2¼ 749 (800-2¼)	1620-2½ 749 (800-2½)

ELEV 871	D	TDZE 871
----------	----------	----------

TDZ/CL Rwy 20 **1**
HIRL Rwy 2-20 and 11-29 **1**
FAF to MAP 4.8 NM

Knots	60	90	120	150	180
Min:Sec	4:48	3:12	2:24	1:55	1:36

ILS or LOC RWY 20

EC-3, 26 DEC 2024 to 23 JAN 2025

EC-3, 26 DEC 2024 to 23 JAN 2025