

WAAS CH <b>97617</b> <b>W11A</b>	APP CRS <b>111°</b>	Rwy Idg <b>6525</b> TDZE <b>871</b> Apt Elev <b>871</b>
--	------------------------	---

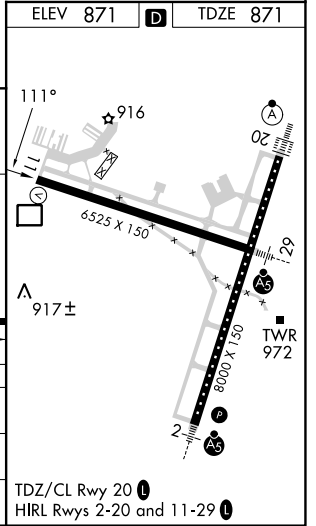
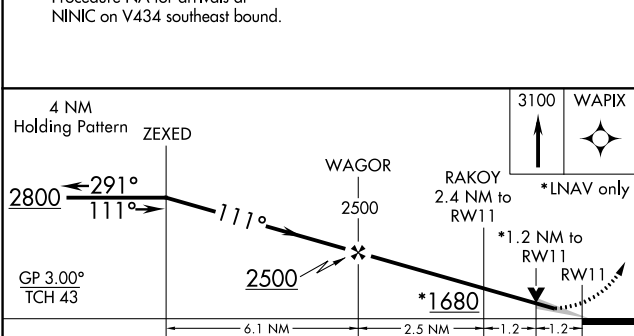
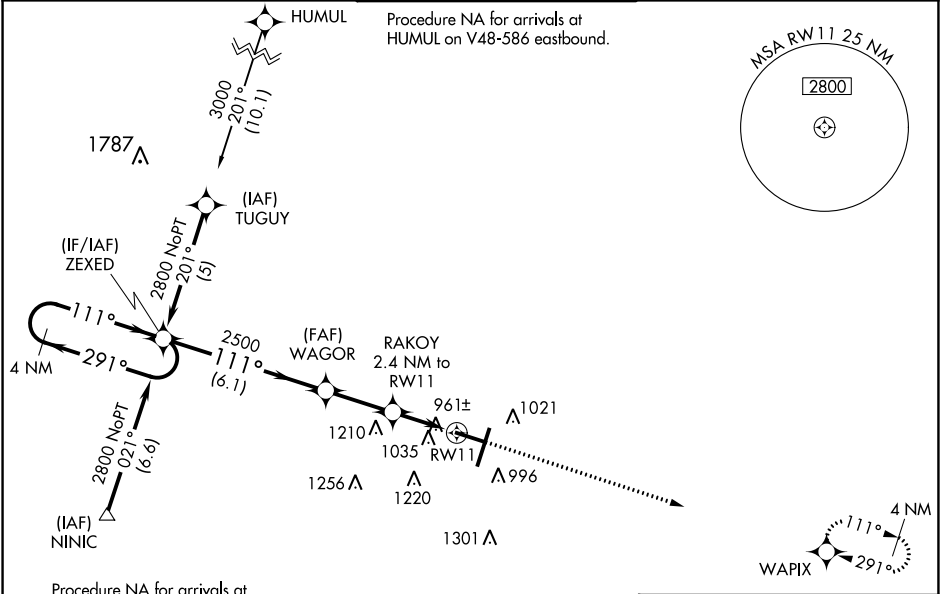
# RNAV (GPS) RWY 11

CENTRAL IL RGNL/BLOOMINGTON-NORMAL (BMI)

**⚠** For uncompensated Baro-VNAV systems, LNAV/VNAV NA below -1.6°C (4°F) or above 54°C (130°F). DME/DME RNP-0.3 NA. Baro-VNAV and VDP NA when using General Downing-Peoria Intl altimeter setting. When local altimeter setting not received, use General Downing-Peoria Intl setting: increase all DA 116 feet and all MDA 120 feet; increase LPV all Cats visibility ½ mile, LNAV/VNAV all Cats and LNAV Cat C/D visibility ¾ mile, and Circling Cats C/D visibility ½ mile.

**MISSED APPROACH:**  
Climb to 3100 direct WAPIX and hold.

ATIS <b>119.575</b>	SAINT LOUIS APP CON <b>128.725 256.9</b>	<b>BLOOMINGTON TOWER *</b> <b>124.6 (CTAF) 269.575</b>	GND CON <b>121.65</b>	UNICOM <b>122.95</b>
------------------------	---	---	--------------------------	-------------------------



CATEGORY	A	B	C	D
LPV DA		1121-3/4	250 (300-3/4)	
LNAV/VNAV DA		1341-1 5/8	470 (500-1 5/8)	
LNAV MDA	1280-1	409 (500-1)	1280-1 1/4	409 (500-1 1/4)
<b>C</b> CIRCLING	1340-1	469 (500-1)	1620-2 1/4	1620-2 1/2
			749 (800-2 1/4)	749 (800-2 1/2)

TDZ/CL Rwy 20 **⓪**  
HIRL Rwy 2-20 and 11-29 **⓪**

# RNAV (GPS) RWY 11

EC-3, 26 DEC 2024 to 23 JAN 2025

EC-3, 26 DEC 2024 to 23 JAN 2025