

WAAS CH 56303 W02A	APP CRS 021°	Rwy Idg 8000 TDZE 867 Apt Elev 871
----------------------------------------	------------------------	---------------------------------------------------------------

RNAV (GPS) RWY 2

CENTRAL IL RGNL/BLOOMINGTON-NORMAL (BMI)

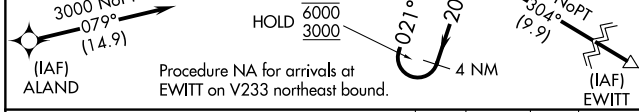
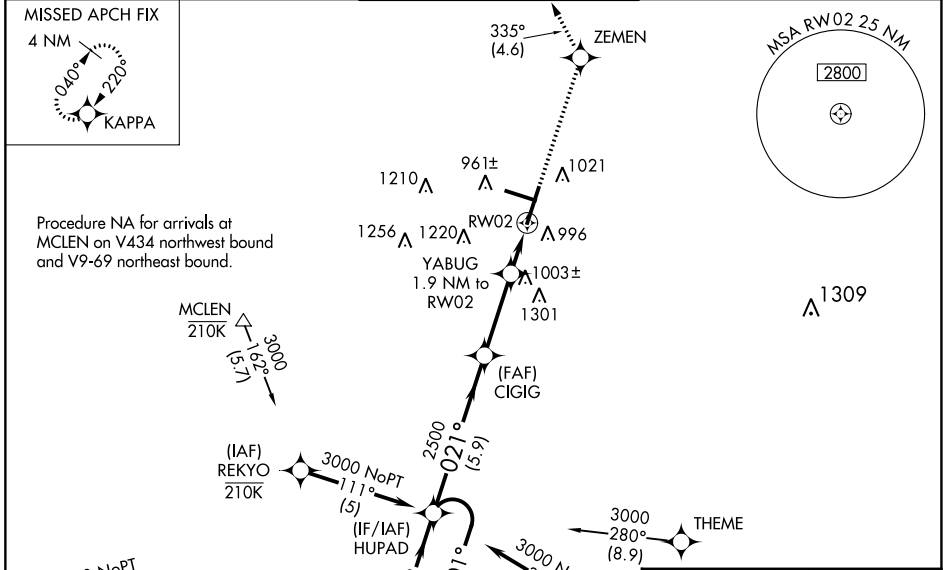
RNP APCH - GPS.

▼ For uncompensated Baro-VNAV systems, LNAV/VNAV NA below -21°C or above 54°C. Baro-VNAV and VDP NA when using PIA altimeter setting. Inop table does not apply to LPV. For inop ALS, increase LNAV/VNAV all Cats visibility to RVR 6000 and LNAV Cats C and D visibility to RVR 6000. When local altimeter setting not received, use PIA altimeter setting: increase LPV DA to 1183 feet; increase LNAV/VNAV DA to 1376 feet and all Cats visibility to RVR 5500; increase all MDAs 120 feet and Circling visibility Cats C, and D ¼ SM. For inop ALS when using PIA altimeter setting; increase LNAV/VNAV all Cats visibility to 1 ½ SM and increase LNAV Cats C and D visibility to 1 ½ SM.

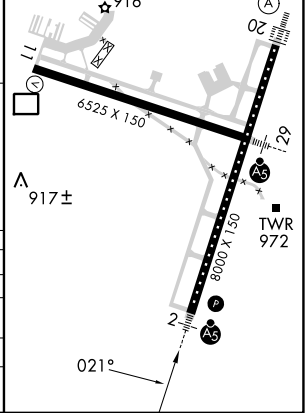
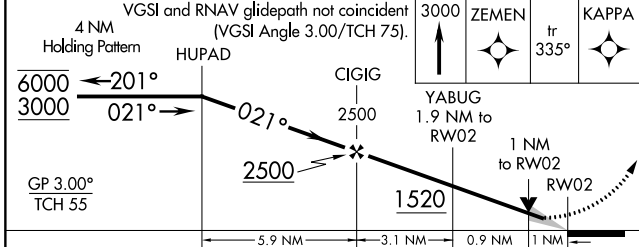
MALSRL

MISSED APPROACH: Climb to 3000 direct ZEMEN and on track 335° to KAPPA and hold, continue climb-in-hold to 3000.

ATIS 119,575	SAINT LOUIS APP CON 128,725 256.9	BLOOMINGTON TOWER * 124.6 (CTAF) 269,575	GND CON 121.65	UNICOM 122.95
------------------------	---------------------------------------------	----------------------------------------------------	--------------------------	-------------------------



ELEV 871	TDZE 867
TDZ/CL Rwy 20	HIRL Rwy 2-20 and 11-29



CATEGORY	A	B	C	D
LPV DA		1067/40	200 (200-¾)	
LNAV/VNAV DA		1260/40	393 (400-¾)	
LNAV MDA		1260/40	393 (400-¾)	
CIRCLING	1340-1	469 (500-1)	1620-2¼ 749 (800-2¼)	1620-2½ 749 (800-2½)

RNAV (GPS) RWY 2

EC-3, 26 DEC 2024 to 23 JAN 2025

EC-3, 26 DEC 2024 to 23 JAN 2025