

WAAS CH 99303 W20A	APP CRS 201°	Rwy Idg TDZE Apt Elev	8000 871 871
--	------------------------	-----------------------------	---

RNAV (GPS) RWY 20

CENTRAL IL RGNL/BLOOMINGTON-NORMAL (BMI)

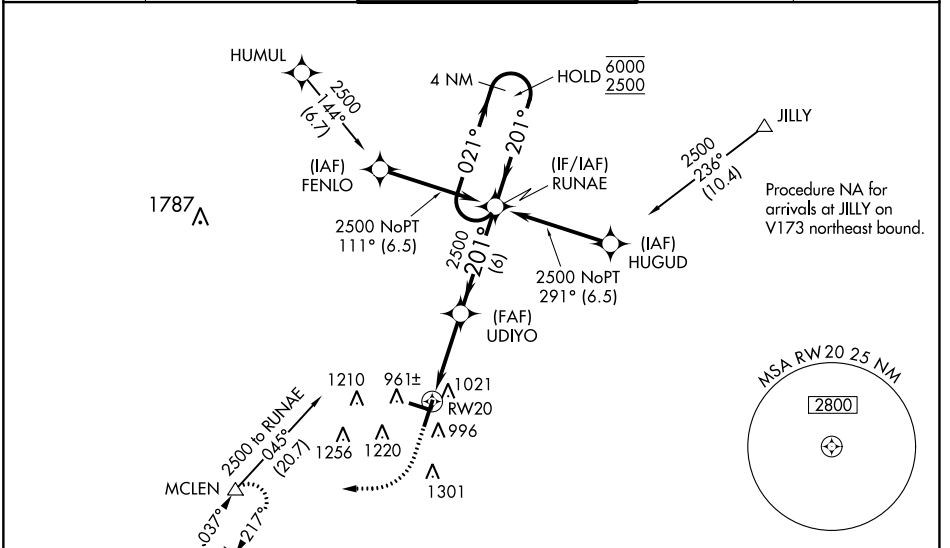
RNP APCH - GPS.

⚠ For uncompensated Baro-VNAV systems, LNAV/VNAV NA below -20°C or above 54°C. Baro-VNAV and VDP NA when using PIA altimeter setting. When local altimeter setting not received, use PIA altimeter setting: increase LPV DA to 1187 feet and all visibilities to RVR 2400; increase LNAV/VNAV DA to 1417 feet and all visibilities to RVR 6000; increase all MDAs 120 feet and LNAV visibility Cat C and D to RVR 5500 and Circling visibility Cat C and D ¼ SM. For inop ALS, increase LNAV Cat C and D visibility to RVR 6000. For inop ALS when using PIA altimeter setting, increase LPV all Cats visibility to RVR 4500.

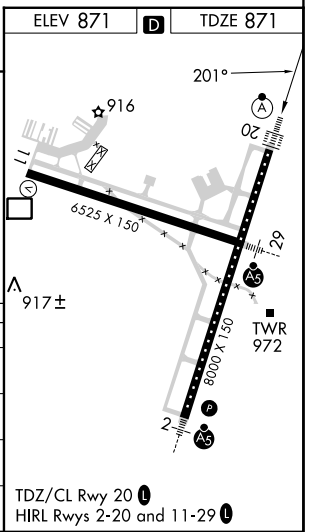
ALS F-2

MISSED APPROACH: Climb to 1500 then climbing right turn to 3000 direct MCLEN and hold.

ATIS 119,575	SAINT LOUIS APP CON 128,725 256,9	BLOOMINGTON TOWER ★ 124,6(CTAF) 269,575	GND CON 121,65	UNICOM 122,95
------------------------	---	---	--------------------------	-------------------------



1500		3000		MCLEN	
↑		↷		△	
1.1 NM to RW20		3.8 NM		6 NM	
RW20		UDIYO 2500		RUNAE 4 NM Holding Pattern	
201°		201°		201°	
GP 3.00°		TCH 58		6000 / 2500	
CATEGORY	A	B	C	D	
LPV DA		1071/18	200 (200-½)		
LNAV/VNAV DA		1301/40	430 (500-¾)		
LNAV MDA	1280/24	409 (500-½)	1280/40	409 (500-¾)	
CIRCLING	1340-1	469 (500-1)	1620-2¼ 749 (800-2¼)	1620-2½ 749 (800-2½)	



EC-3, 26 DEC 2024 to 23 JAN 2025

EC-3, 26 DEC 2024 to 23 JAN 2025