

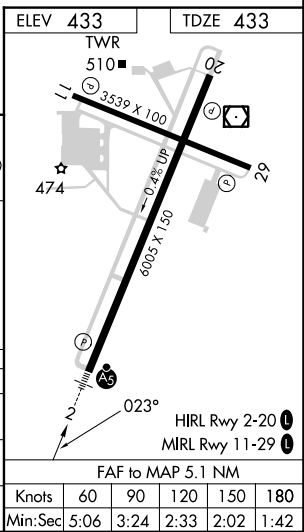
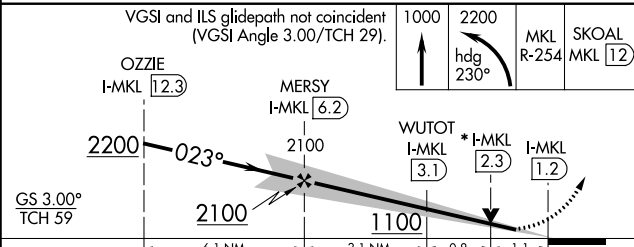
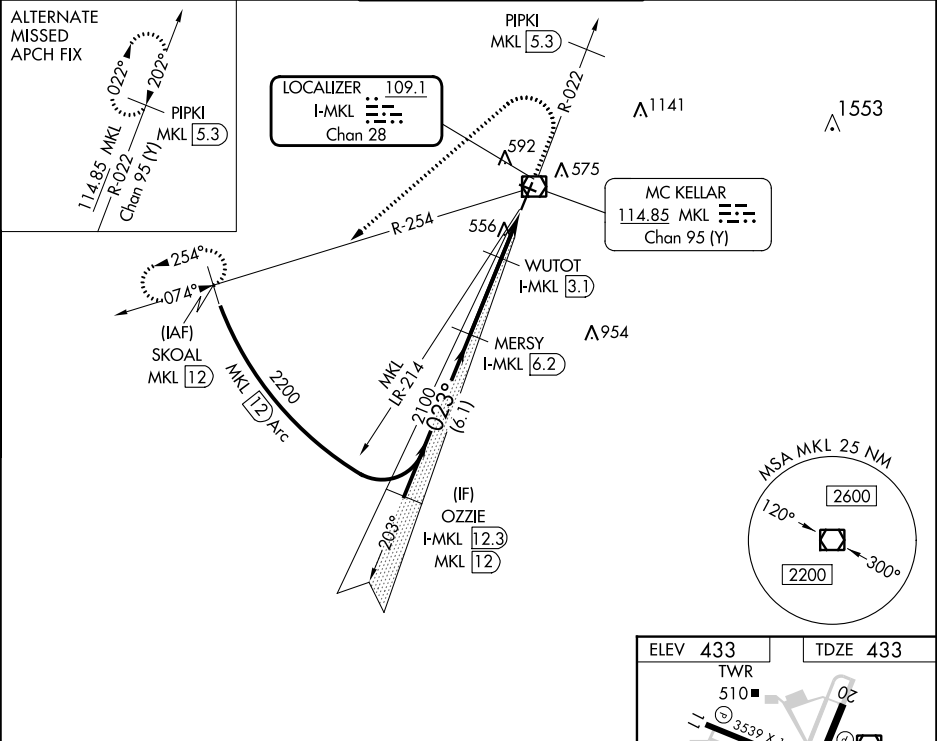
LOC/DME I-MKL 109.1 Chan 28	APP CRS 023°	Rwy Idg 6005 TDZE 433 Apt Elev 433
---	------------------------	---

ILS or LOC RWY 2

JACKSON RGNL (MKL)

DME required. RADAR required for procedure entry.		MALSR 	MISSED APPROACH: Climb to 1000 then climbing left turn to 2200 on heading 230° and MKL VOR/DME R-254 to SKOAL/MKL 12 DME and hold.
Rwy 2 helicopter visibility reduction below 3/4 SM NA. For inop ALS, increase S-LOC 2 Cat A/B visibility to 1 SM and Cat C/D visibility 1 1/2 SM.			

ASOS 119.325	MEMPHIS CENTER 134.65 316.15	JACKSON TOWER ★ 127.15 (CTAF) 0 249.95	GND CON 120.9	UNICOM 122.95
------------------------	--	--	-------------------------	-------------------------



CATEGORY	ELEV 433 TDZE 433					
	A	B	C	D		
S-ILS 2	770-3/4 337 (400-3/4)					
S-LOC 2	820-3/4 387 (400-3/4)					
CIRCLING	900-1 467 (500-1)	920-1 487 (500-1)	960-1 1/2 527 (600-1 1/2)	1100-2 667 (700-2)		
	Knots	60	90	120	150	180
	Min:Sec	5:06	3:24	2:33	2:02	1:42

SE-1, 26 DEC 2024 to 23 JAN 2025

SE-1, 26 DEC 2024 to 23 JAN 2025