

VOR/DME MZZ <b>108.6</b> Chan <b>23</b>	APP CRS <b>143°</b>	Rwy Idg <b>3456</b> TDZE <b>859</b> Apt Elev <b>859</b>
---	------------------------	---

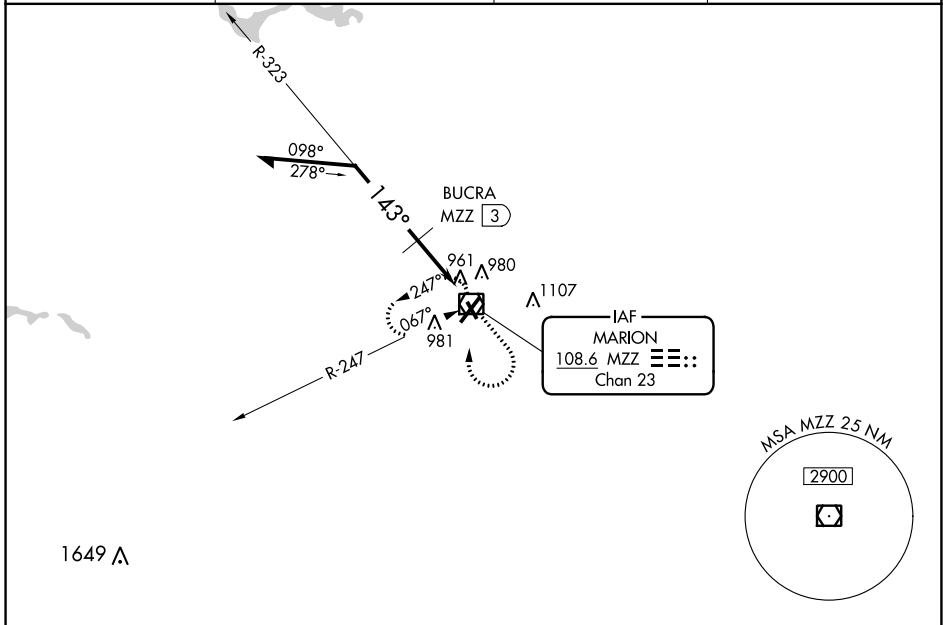
# VOR RWY 15

MARION MUNI - MCKINNEY FLD (MZZ)

**⚠ NA** When local altimeter setting not received, use Fort Wayne Intl altimeter setting and increase all MDA 100 feet, increase S-15 Cat B/C/D visibility  $\frac{1}{4}$  SM, increase Circling Cat B/C/D visibility  $\frac{1}{2}$  SM; BUCRA fix minimums: increase S-15 Cat C/D visibility  $\frac{3}{8}$  SM, increase Circling Cat C/D visibility  $\frac{1}{2}$  SM. Rwy 15 helicopter visibility reduction below 1 SM NA. Circling Rwy 15 NA at night. Straight-in Rwy 15 NA at night.

**MISSED APPROACH:**  
Climb to 2400 then right turn direct MZZ VOR/DME and hold.

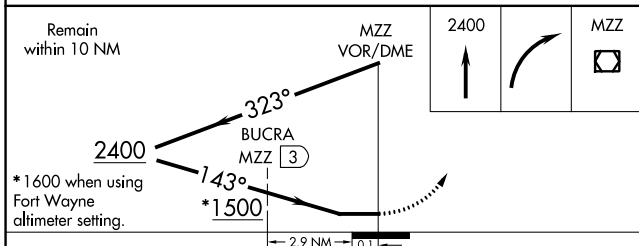
AWOS-3 <b>108.6</b>	GRISSOM APP CON * <b>121.05 338.275</b>	CLNC DEL <b>120.0</b>	UNICOM <b>122.7 (CTAF) 0</b>
------------------------	--	--------------------------	---------------------------------



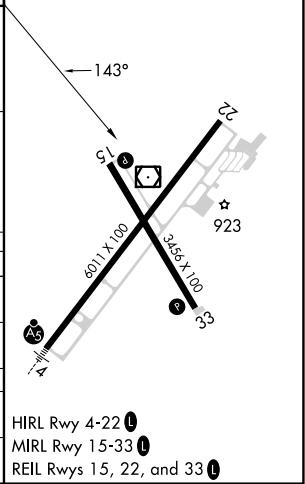
EC-2, 26 DEC 2024 to 23 JAN 2025

EC-2, 26 DEC 2024 to 23 JAN 2025

ELEV 859	TDZE 859
----------	----------



CATEGORY	A	B	C	D
S-15	1500-1	641 (700-1)	1500-1 $\frac{3}{4}$ 641 (700-1 $\frac{3}{4}$ )	1500-2 641 (700-2)
<b>C</b> CIRCLING	1500-1	641 (700-1)	1500-1 $\frac{7}{8}$ 641 (700-1 $\frac{7}{8}$ )	1500-2 641 (700-2)
<b>BUCRA FIX MINIMUMS</b>				
S-15	1240-1 381 (400-1)		1240-1 $\frac{1}{4}$ 381 (400-1 $\frac{1}{4}$ )	
<b>C</b> CIRCLING	1300-1 441 (500-1)	1320-1 461 (500-1)	1420-1 $\frac{1}{2}$ 561 (600-1 $\frac{1}{2}$ )	1500-2 641 (700-2)



# VOR RWY 15