

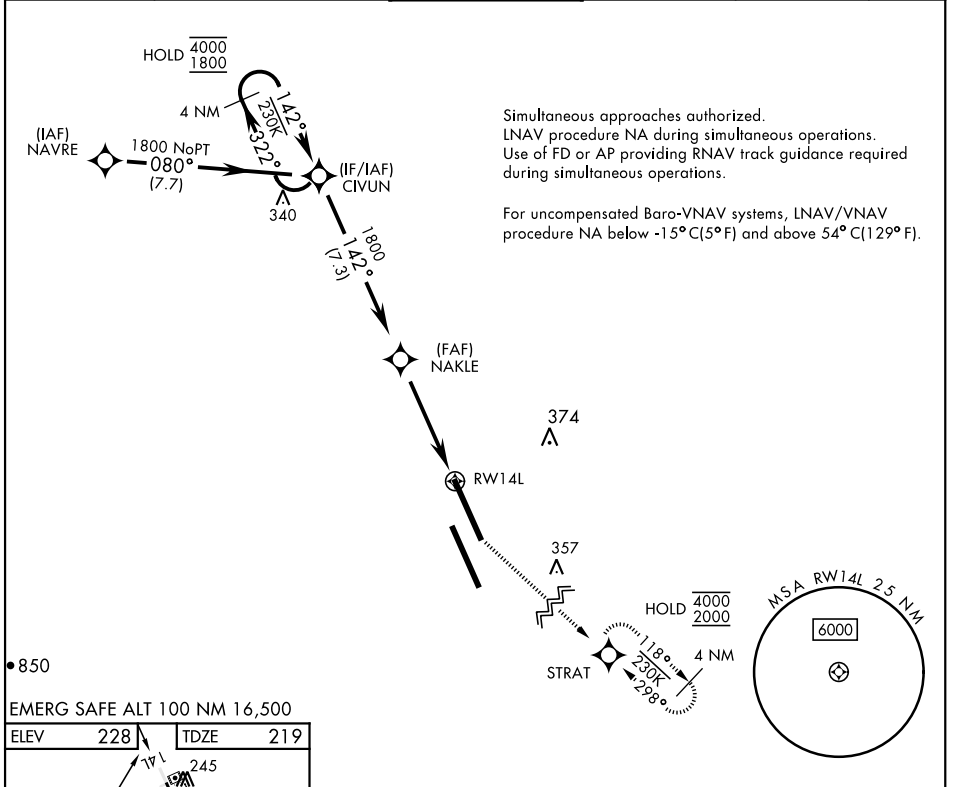
# RNAV (GPS) RWY 14L

WAAS Chan <b>70209</b> <b>W14A</b>	APCH CRS <b>142°</b>	Rwy Idg <b>13,502</b> TDZE <b>219</b> Arprt Elev <b>228</b>
--	-------------------------	---

[USN]

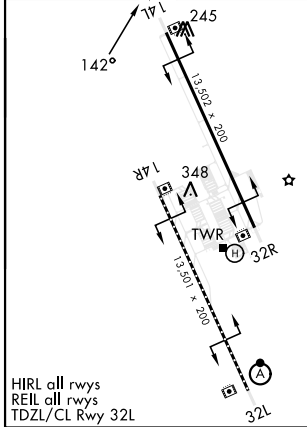
LEMOORE NAS (REEVES FIELD) (KNLC)

DME/DME RNP-0.3 NA		MISSED APPROACH: Climb to 1200, then climb left turn to 2000 direct STRAT and hold.			
ATIS ★ <b>121.575 327.15</b>	APP CON <b>124.1 269.025 (N)</b> <b>118.15 269.025 (S)</b>	TOWER ★ <b>128.3 340.2</b>	GND CON <b>121.65 305.2</b>	CLNC DEL <b>124.1 371.9</b>	ASR/PAR



EMERG SAFE ALT 100 NM 16,500

ELEV	228	TDZE	219
------	-----	------	-----



4 NM Holding Pattern	CIVUN	NAKLE	1200	2000	STRAT
	4000 ← 322°	142° →	1800	0.8 NM to RWY14L	RWY14L
GP 3.00°	TCH 54	4.8 NM			
CATEGORY	A	B	C	D	
LPV DA	419-3/4	200	(200-3/4)		
LNAV/VNAV DA	469-3/4	250	(300-3/4)		
LNAV MDA	520-1	301	(300-1)		
<b>C</b> CIRCLING	680-1	452 (500-1)	700-1 1/2 472 (500-1 1/2)	780-2 552 (600-2)	

# RNAV (GPS) RWY 14L

SW-2, 26 DEC 2024 to 23 JAN 2025

SW-2, 26 DEC 2024 to 23 JAN 2025