

RNAV (GPS) RWY 32L

WAAS Chan 50085 W32A	APCH CRS 322°	Rwy Idg 13,501 TDZE 227 Arprt Elev 228
--	-------------------------	---

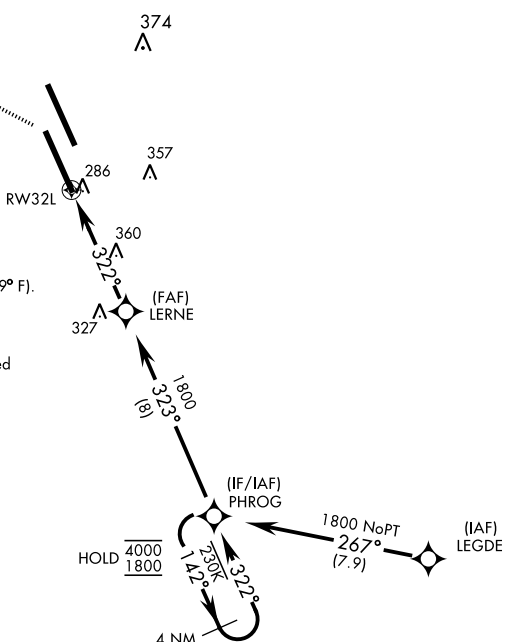
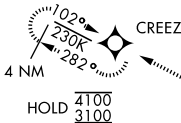
[USN]

LEMOORE NAS (REEVES FIELD) (KNLC)

▼ * When ALS inop, increase vis to ¼ mile. ** When ALS inop, increase CAT AB vis to 1 mile; CAT CD vis to 1¼ miles.	ALSIF-2	MISSED APPROACH: Climb to 1000, then climbing left turn to 3100 direct CREEZ and hold.

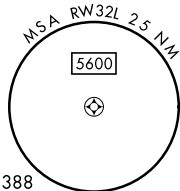
ATIS ★ 121.575 327.15	APP CON 124.1 269.025 (N) 118.15 269.025 (S)	TOWER ★ 128.3 340.2	GND CON 121.65 305.2	CLNC DEL 124.1 371.9	ASR/PAR
---------------------------------	--	-------------------------------	--------------------------------	--------------------------------	---------

DME/DME RNP-0.3 NA



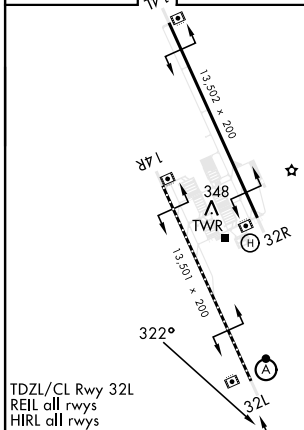
For uncompensated Baro-VNAV systems, LNAV/VNAV procedure NA below -15° C (5° F) and above 54° C (129° F).

Simultaneous approaches authorized.
LNAV procedure NA during Simultaneous operations.
Use of FD or AP providing RNAV track guidance required during simultaneous operations.

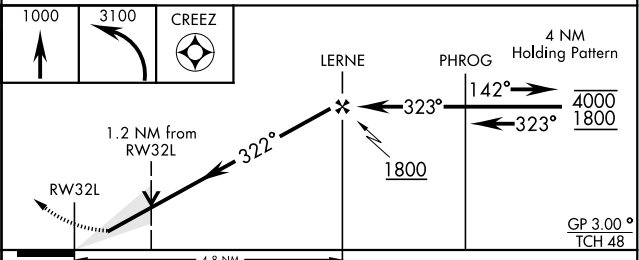


EMERG SAFE ALT 100 NM 16,500

ELEV	228	TDZE	227
------	-----	------	-----



TDZL/CL Rwy 32L
REIL all rwwys
HIRL all rwwys



CATEGORY	A	B	C	D
LPV DA *	427-½ 200 (200-½)			
LNAV/VNAV DA *	477-½ 250 (300-½) 482-½ 255 (300-½)			
LNAV MDA**	660-½	433 (500-½)	660-¾ 433 (500-¾)	780-2
CIRCLING	680-1	452 (500-1)	472 (500-½)	552 (600-2)

RNAV (GPS) RWY 32L

SW-2, 26 DEC 2024 to 23 JAN 2025

SW-2, 26 DEC 2024 to 23 JAN 2025