

# REEVES-FOUR DEPARTURE (REVES4•NLC)

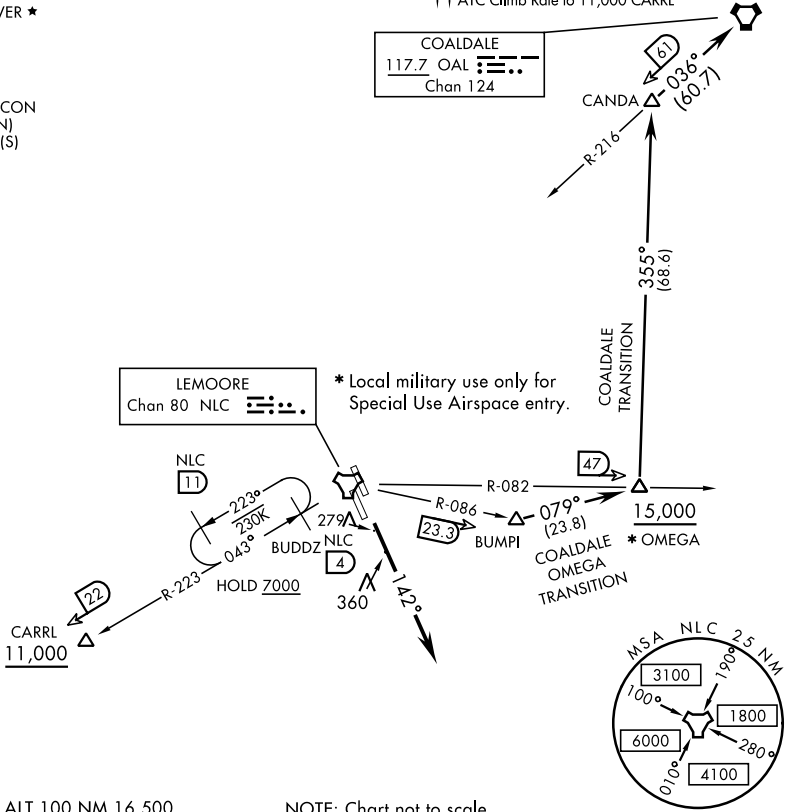
AL-5067 [USN]

LEMOORE, CALIFORNIA

ATIS ★ 121.575 327.15  
 CLNC DEL  
 124.1 371.9  
 GND CON  
 121.65 305.2  
 LEMOORE TOWER ★  
 128.3 340.2  
 (Rwy 14L, 32L)  
 128.3 360.2  
 (Rwy 14R, 32R)  
 LEMOORE DEP CON  
 124.1 318.8 (N)  
 118.15 318.8 (S)

Rwy	Knots	60	120	180	240	300	360
†14L/R	V/V(fpm)	320	640	960	1280	1600	1920
††14L/R	V/V(fpm)	364	728	1092	1456	1820	2184

† ATC Climb Rate to 15,000 OMEGA  
 †† ATC Climb Rate to 11,000 CARRL



SW-2, 26 DEC 2024 to 23 JAN 2025

SW-2, 26 DEC 2024 to 23 JAN 2025

EMERG SAFE ALT 100 NM 16,500

NOTE: Chart not to scale

## DEPARTURE ROUTE DESCRIPTION

**TAKE-OFF RUNWAY 14L/14R:** Climb to 2000 via heading 142° then radar vectors to join assigned transition or route.

**CARRL TRANSITION (REVES4.CARRL):** From over CARRL thence as filed. Cross CARRL at or above 11,000.

**COALDALE TRANSITION (REVES4.OAL):** From over BUMPI direct OMEGA, direct CANDA, direct COALDALE VORTAC. Cross OMEGA at or above 15,000.

**OMEGA TRANSITION (REVES4.OMEGA):** From over BUMPI direct OMEGA thence as filed.

**LOST COMMUNICATIONS:** If no transmissions are received within 8 DME of NLC TACAN, fly departure heading to intercept NLC 10 DME arc, arc to respective departure radial then via departure radial to assigned departure fix. Then via assigned route. Once established on departure radial climb to filed altitude.

# REEVES-FOUR DEPARTURE (REVES4•NLC)

Amdt 17 JUN 21

LEMOORE, CALIFORNIA

LEMOORE NAS (REEVES FIELD) (KNLC)