

TACAN Y RWY 32L

LEMOORE NAS (REEVES FIELD) (KNLC)

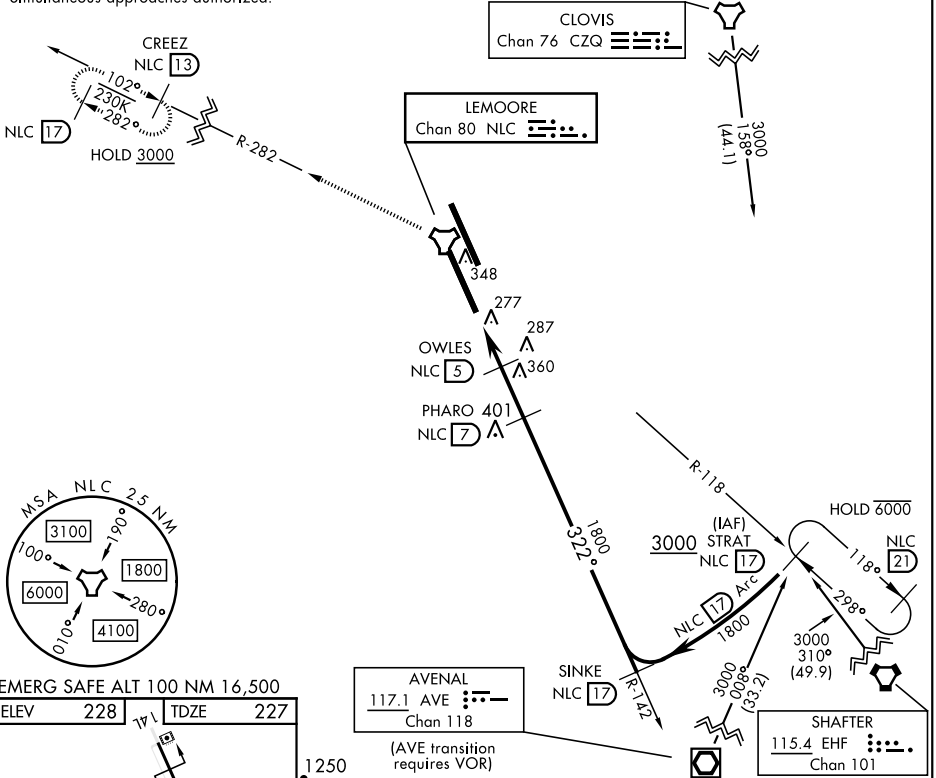
TACAN NLC Chan 80	APCH CRS 322°	Rwy Idg 13,501 TDZE 227 Arprt Elev 228
-----------------------------	-------------------------	---

[USN]

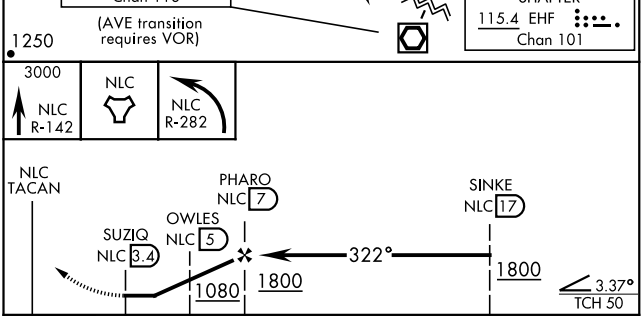
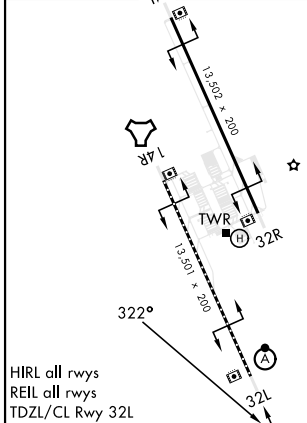
<p>▼ *When ALS inop, increase vis to 1 mile.</p>	ALSF-2 	MISSED APPROACH: Climb to 3000 via R-142 to NLC TACAN, then via R-282 to CREEZ and hold.

ATIS ★ 121.575 327.15	APP CON 124.1 269.025 (N) 118.15 269.025 (S)	TOWER ★ 128.3 340.2	GND CON 121.65 305.2	CLNC DEL 124.1 371.9	ASR/PAR
---------------------------------	--	-------------------------------	--------------------------------	--------------------------------	---------

Simultaneous approaches authorized.



EMERG SAFE ALT 100 NM 16,500
ELEV 228 TDZE 227



CATEGORY	A	B	C	D
S-32L *	580-1/2	353	(400-1/2)	
CIRCLING	680-1 452 (500-1)		700-1/2 472 (500-1/2)	780-2 552 (600-2)

TACAN Y RWY 32L

SW-2, 26 DEC 2024 to 23 JAN 2025

SW-2, 26 DEC 2024 to 23 JAN 2025