

RNAV (GPS) RWY 27

APCH CRS	Rwy Idg	4121
273°	TDZE	242
	Arpt Elev	243

[USA]

SIMMONS AAF (KFBG)

RNP APCH - GPS
 ▼ When local altimeter setting not received, use Pope AAF altimeter setting.

MISSED APPROACH: Climbing left turn to 2100 direct AXILE and hold.

ATIS
139.25

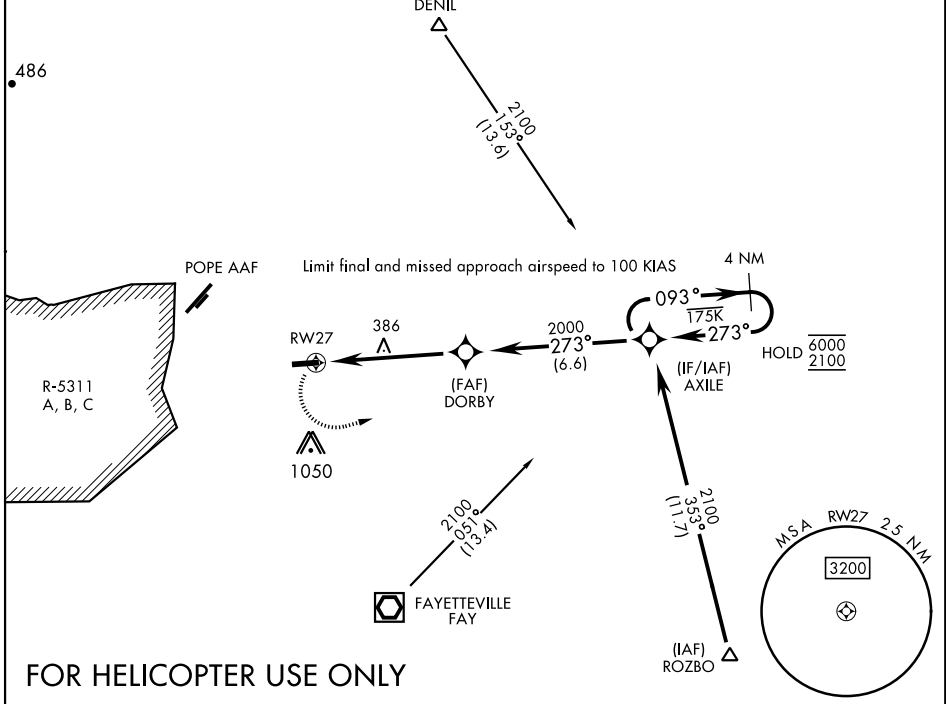
FAYETTEVILLE APP CON
133.0 290.25

TOWER ★
125.9 240.625

GND CON
121.9 229.4

Rwy 27 helicopter visibility reduction below 3/4 mile not authorized.

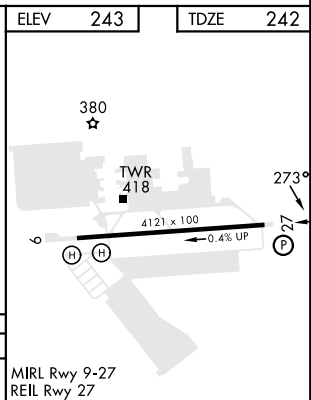
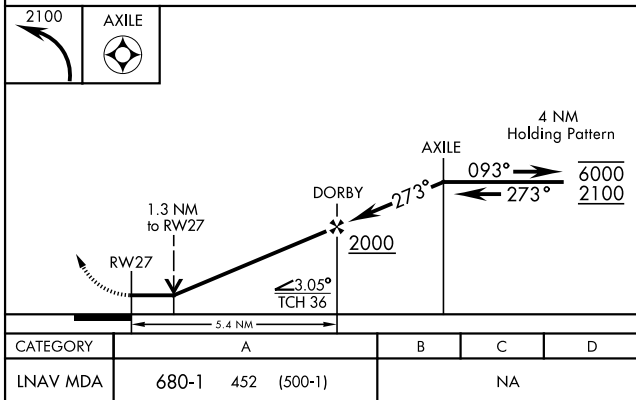
Knots	60	120	180	240	300	360
V/V(fpm)	400	800	1200	1600	2000	2400
Min climb of 400 ft/NM to 2000 - Controlling Obstacle 1050'						



SE-2, 26 DEC 2024 to 23 JAN 2025

SE-2, 26 DEC 2024 to 23 JAN 2025

FOR HELICOPTER USE ONLY



CATEGORY	A			B	C	D
LNAV MDA	680-1	452	(500-1)	NA		

MIRL Rwy 9-27
 REIL Rwy 27

RNAV (GPS) RWY 27