

VORTAC GGG <b>112.9</b> Chan <b>76</b>	APP CRS <b>068°</b>	Rwy Idg TDZE Apt Elev	N/A N/A <b>357</b>
----------------------------------------------	------------------------	-----------------------------	--------------------------

**VOR/DME-A**  
HARRISON COUNTY (ASL)

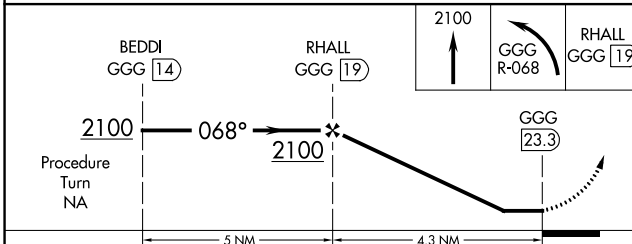
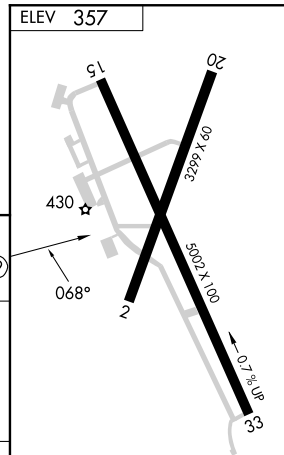
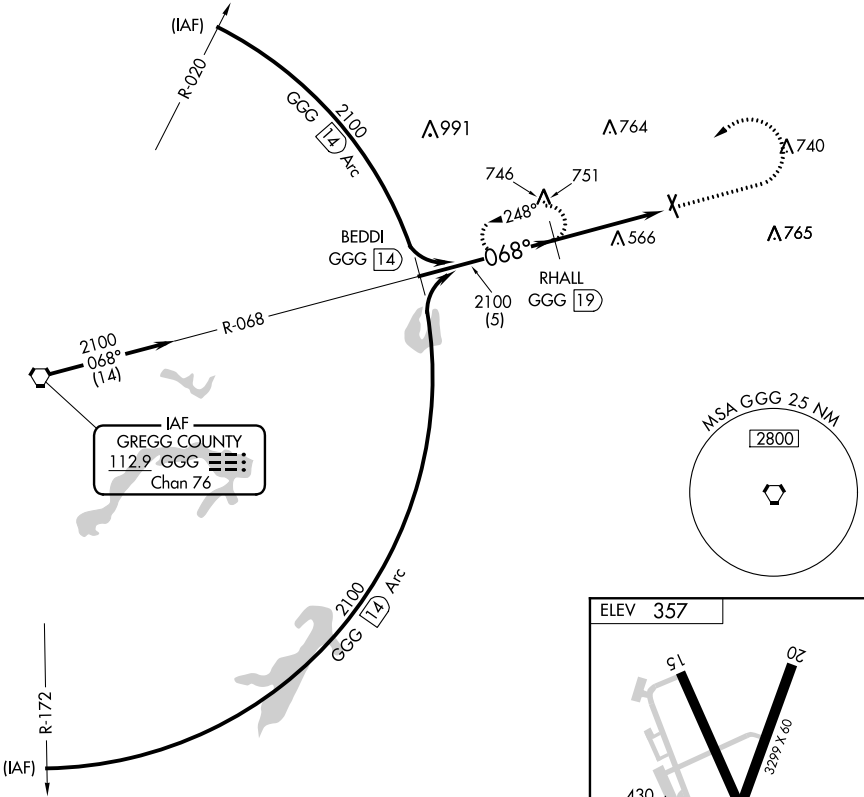
**⚠** When local altimeter setting not received, use Longview altimeter setting and increase all MDA 60 feet; increase Cat B visibility to 1½. Night Landing; Rwy 2, 15, 20 NA. Helicopter visibility reduction below 1 SM NA.

**⚠ NA** MISSED APPROACH: Climb to 2100 then left turn via GGG R-068 to RHALL/GGG 19 DME and hold.

AWOS-3PT  
**118.675**

SHREVEPORT APP CON  
**119.9 335.55**

UNICOM  
**122.8** (CTAF) **📻**



CATEGORY	A	B	C	D
CIRCLING	1300-1¼	943 (1000-1¼)		NA

REIL Rwy 15 and 33 **📻**  
MIRL Rwy 15-33 **📻**

SC-2, 26 DEC 2024 to 23 JAN 2025

SC-2, 26 DEC 2024 to 23 JAN 2025