

WAAS CH 69524 W22A	APP CRS 218°	Rwy Idg TDZE Apt Elev	3203 739 745
--	------------------------	-----------------------------	---

RNAV (GPS) RWY 22R

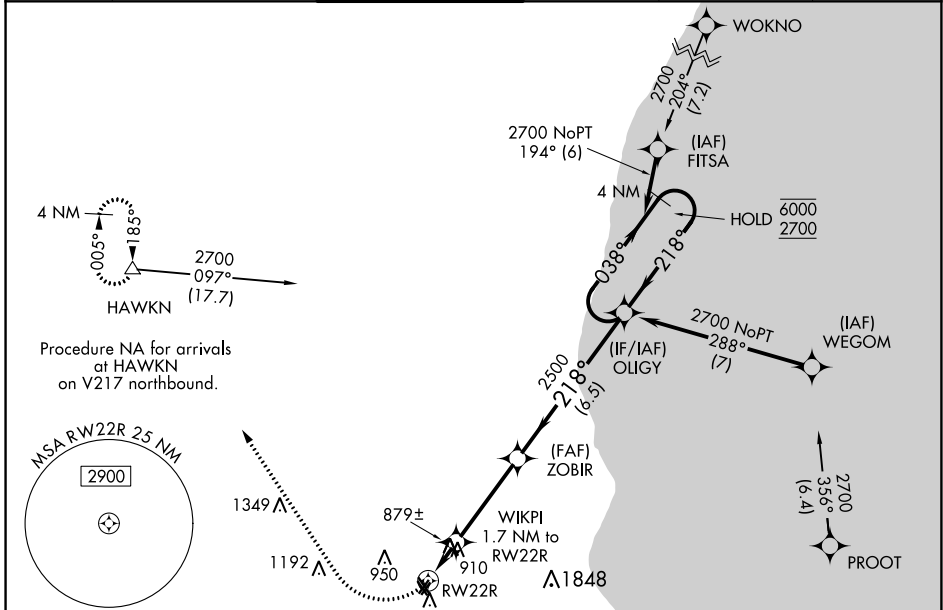
LAWRENCE J TIMMERMAN (MWC)

RNP APCH.

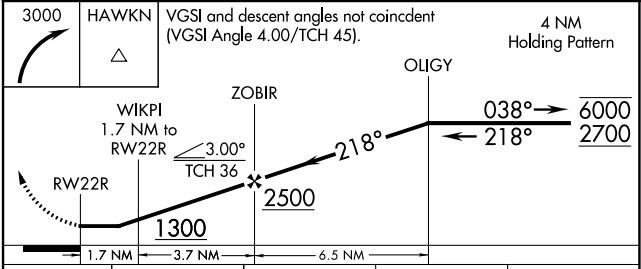
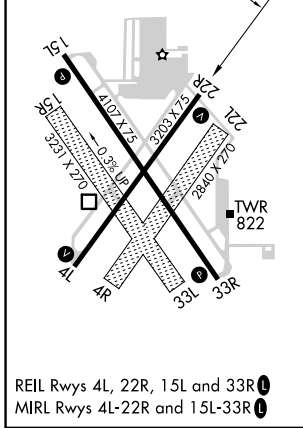
⚠ Circling NA to Rwy 4R, 15R, 22L, and 33L. Rwy 22R helicopter visibility reduction below ¼ SM NA. When local altimeter setting not received, use General Mitchell Intl altimeter setting and increase all MDAs 40 feet and LP and LNAV visibility Cats C and D ½ SM.

MISSED APPROACH: Climbing right turn to 3000 direct HAWKN and hold.

ATIS 128.3	MILWAUKEE APP CON 125.35 307.0	TIMMERMAN TOWER ★ 120.5 (CTAF) 0	GND CON 121.7	CLNC DEL 121.7 (When twr closed)	UNICOM 122.95
----------------------	--	--	-------------------------	---	-------------------------



ELEV 745	TDZE 739
----------	----------



CATEGORY	A	B	C	D
LP MDA	1160-1	421 (500-1)	1160-1¼	421 (500-1¼)
LNAV MDA	1160-1	421 (500-1)	1160-1¼	421 (500-1¼)
CIRCLING	1220-1 475 (500-1)	1340-1 595 (600-1)	1360-1¾ 615 (700-1¾)	1560-2¾ 815 (900-2¾)

EC-3, 26 DEC 2024 to 23 JAN 2025

EC-3, 26 DEC 2024 to 23 JAN 2025