

LOC I-SKC <b>109.5</b>	APP CRS <b>103°</b>	Rwy Idg <b>5849</b>
		TDZE <b>901</b>
		Apt Elev <b>911</b>


# ILS or LOC RWY 10

WAUKESHA COUNTY (U/S)

RADAR required for procedure entry.

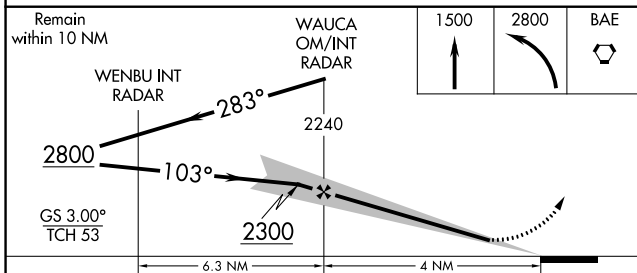
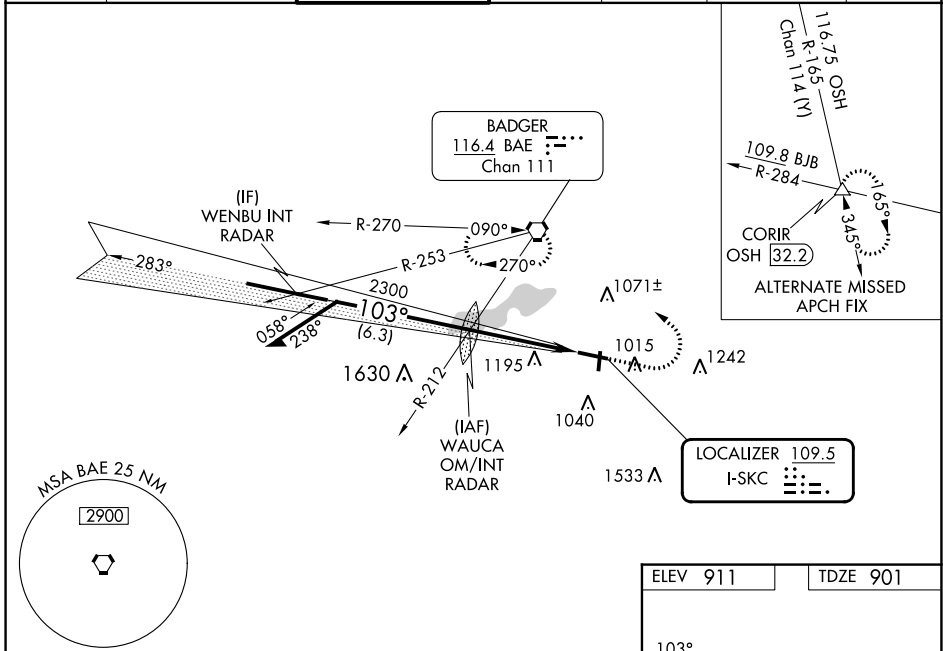
**⚠** For inoperative MALSRR, increase S-LOC 10 Cat C/D visibility to 1 1/2 mile. For inop MALSRR when using Lawrence J Timmerman altimeter setting, increase S-LOC 10 Cat C/D visibility to 1 1/2 mile. When local altimeter setting not received, use Lawrence J Timmerman altimeter setting: increase DA to 1147 feet; increase all MDAs 60 feet and increase S-LOC 10 Cat C and D and Circling Cat C and D visibility 1/4 SM.

MALSRR



MISSED APPROACH:  
Climb to 1500 then climbing left turn to 2800 direct BAE VORTAC and hold.

ATIS <b>118.875</b>	MILWAUKEE APP CON <b>125.35 307.0</b>	WAUKESHA TOWER * <b>123.7 (CTAF) 0</b>	GND CON <b>121.6</b>	CLNC DEL <b>121.6</b>	CLNC DEL <b>128.7</b> <small>(When twr closed)</small>	UNICOM <b>122.95</b>
------------------------	--	---	-------------------------	--------------------------	--	-------------------------



ELEV 911	TDZE 901
----------	----------

TWR 960  
3599 X 75  
5849 X 100  
81  
20  
36

HIRL Rwy 10-28	MIRL Rwy 18-36	REIL Rwy 18, 28 and 36			
FAF to MAP 4 NM					
Knots	60	90	120	150	180
Min:Seq	4:00	2:40	2:00	1:36	1:20

CATEGORY	A	B	C	D
S-ILS-10	1101-1/2		200 (200-1/2)	
S-LOC-10	1400-1/2	499 (500-1/2)	1400-1	499 (500-1)
CIRCLING	1460-1 549 (600-1)	1500-1 589 (600-1)	1540-1 3/4 629 (700-1 3/4)	1640-2 1/4 729 (800-2 1/4)

EC-3, 26 DEC 2024 to 23 JAN 2025

EC-3, 26 DEC 2024 to 23 JAN 2025