

(UECKR6.UECKR) 24137  
**UECKR SIX DEPARTURE (RNAV)**

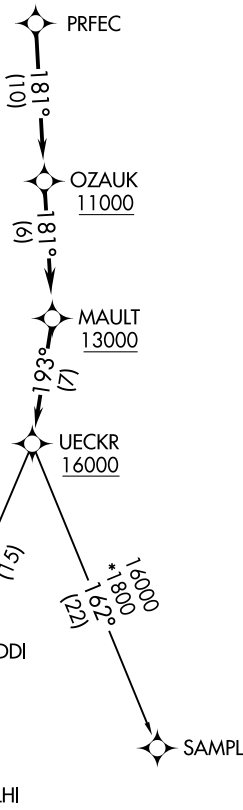
AL-5078 (FAA)

WAUKESHA COUNTY (UES)  
 WAUKESHA, WISCONSIN

ATIS  
 118.875  
 CLNC DEL  
 121.6  
 MILWAUKEE CLNC DEL  
 128.7 (when twr closed)  
 GND CON  
 121.6  
 MILWAUKEE DEP CON  
 125.35 307.0



**TOP ALTITUDE:  
 ASSIGNED BY ATC**



TAKEOFF MINIMUMS

Rwys 18, 28, 36: Standard.  
 Rwy 10: 400-2½ or standard with minimum climb of 316' per NM to 1400.

- NOTE: RNAV 1.
- NOTE: GPS or DME/DME/IRU required.
- NOTE: RADAR required.
- NOTE: Turbojet aircraft maintain 250K until advised by ATC.
- NOTE: Notify ATC if unable to comply with crossing restrictions.

NOTE: Chart not to scale.

**DEPARTURE ROUTE DESCRIPTION**

Climb on assigned heading for RADAR vectors to PRFEC, thence...

...on track 181° to cross OZAUK at or above 11000, then on track 181° to cross MAULT at or above 13000, then on track 193° to cross UECKR at or above 16000, then on (transition). Maintain ATC assigned altitude, expect filed altitude ten minutes after departure.

DELHI TRANSITION (UECKR6.DELHI)

SAMPL TRANSITION (UECKR6.SAMPL)

**UECKR SIX DEPARTURE (RNAV)**  
 (UECKR6.UECKR) 26MAR20

WAUKESHA, WISCONSIN  
 WAUKESHA COUNTY (UES)

EC-3, 26 DEC 2024 to 23 JAN 2025

EC-3, 26 DEC 2024 to 23 JAN 2025