

MERIDIAN, MISSISSIPPI

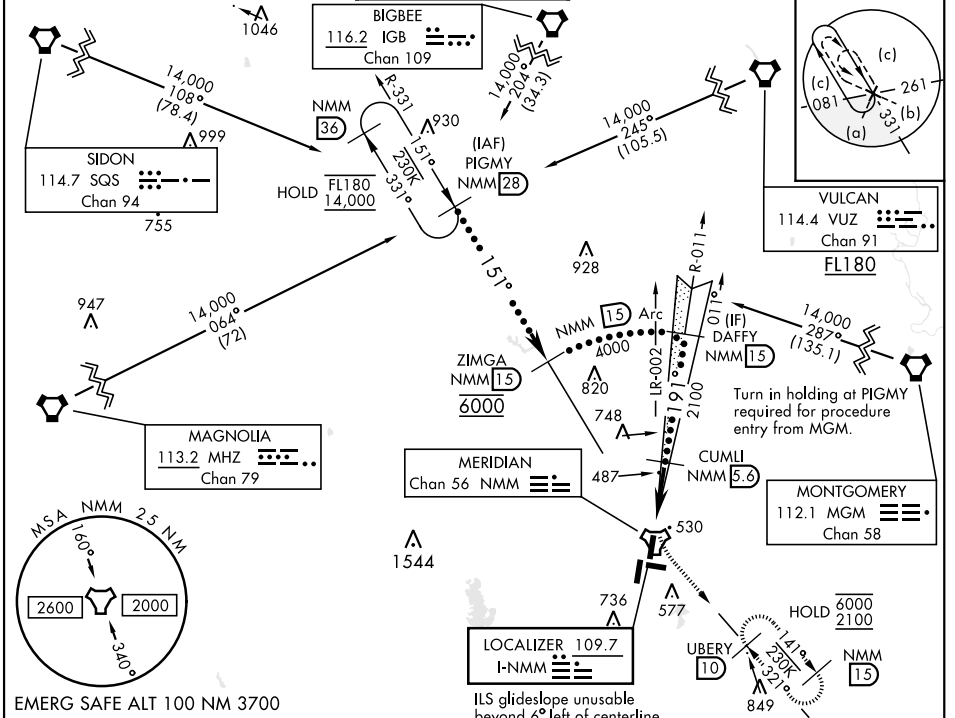
# HI-ILS Z or LOC/DME Z RWY 19L

LOC I-NMM <b>109.7</b>	APCH CRS <b>191°</b>	Rwy ldg TDZE Arpt Elev <b>8000</b> <b>316</b> <b>316</b>	AL-5079 [USN]	MERIDIAN NAS (MC CAIN FIELD) (KNMM)
---------------------------	-------------------------	---	---------------	-------------------------------------

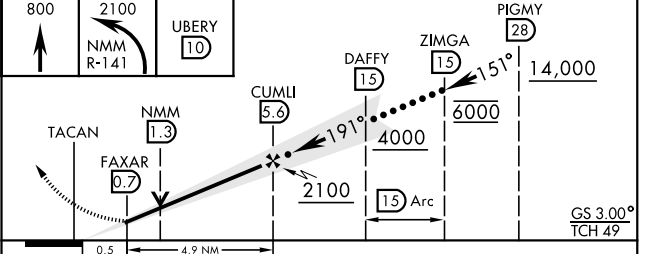
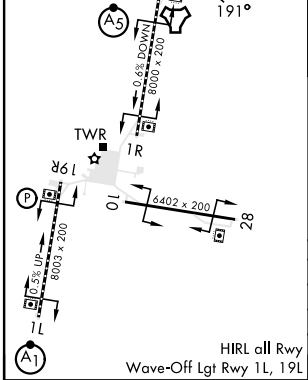
\*When ALS inop, increase vis to ¾ mile.  
 \*\*When ALS inop, increase vis to 1 ¼ miles.

MALSR (A5) MISSED APPROACH: Climb to 800 then climbing left turn to 2100 intercept NMM R-141 to UBERY and hold.

ATIS ★ <b>290.525</b>	APP CON <b>120.95 276.4</b>	NAVY MC CAIN TOWER ★ <b>126.2 340.2</b>	GND CON <b>336.4</b>	CLNC DEL <b>301.0</b>	ASR/ PAR
--------------------------	--------------------------------	--	-------------------------	--------------------------	-------------



ELEV 316	TDZE 316
----------	----------



0.5	4.9 NM		
CATEGORY	C	D	E
S-ILS 19L *	516-½	200	(200-½)
S-LOC 19L**	740-¾	424	(500-¾)
CIRCLING	840-1½ 524 (600-1½)	880-2 564 (600-2)	1080-2¾ 764 (800-2¾)

MERIDIAN, MISSISSIPPI 32° 33' N - 88° 33' W MERIDIAN NAS (MC CAIN FIELD) (KNMM)

# HI-ILS Z or LOC/DME Z RWY 19L

SC-4, 26 DEC 2024 TO 23 JAN 2025

SC-4, 26 DEC 2024 TO 23 JAN 2025