

MERIDIAN, MISSISSIPPI

TACAN Y RWY 19L

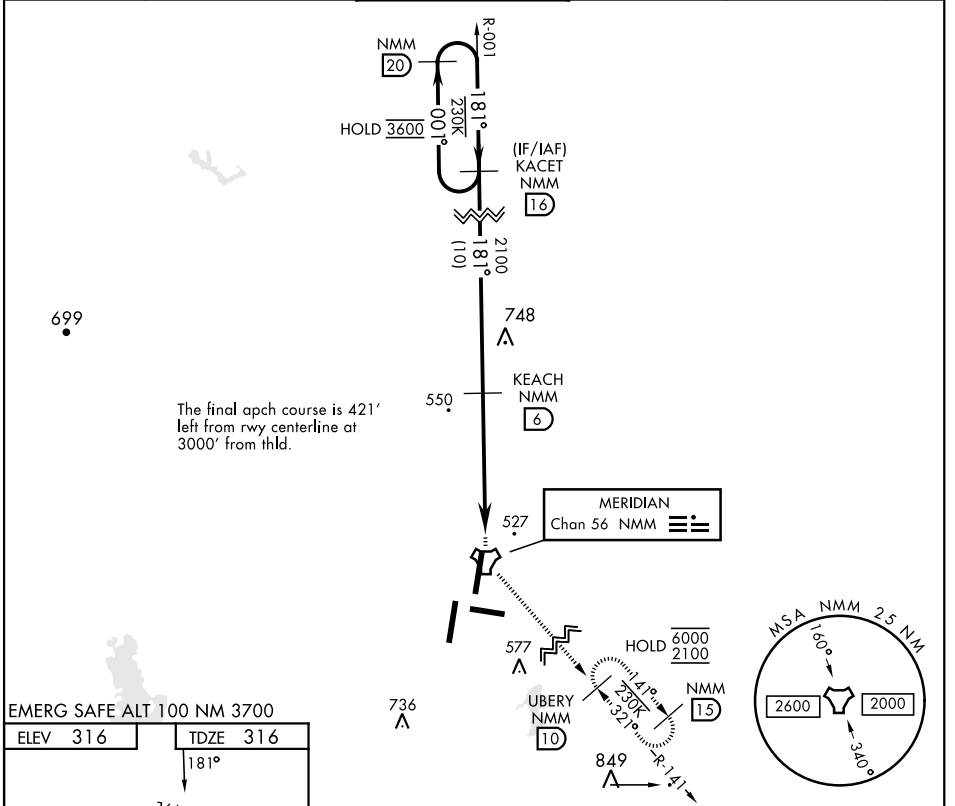
TACAN NMM Chan 56	APCH CRS 181°	Rwy Idg TDZE Arprt Elev 8000 316 316
--------------------------	----------------------	---

AL-5079 [USN]

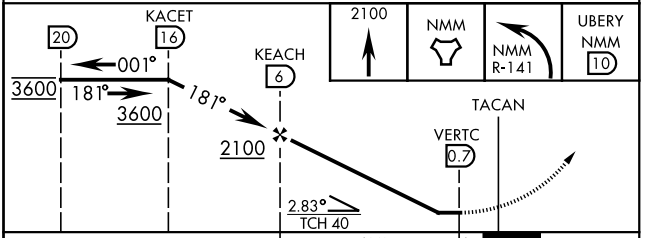
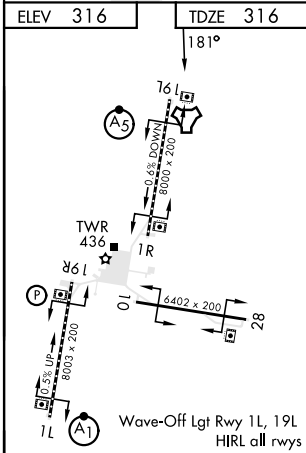
MERIDIAN NAS (MC CAIN FIELD) (KNMM)

RADAR required.		MALSR	MISSED APPROACH: Climb to 2100 direct NMM TACAN then via R-141 to UBERY and hold.		
* When ALS inop, increase CAT AB vis to 1 mile; CDE vis to 1/8 miles.					

ATIS ★ 290.525	APP CON 120.95 276.4	NAVY MC CAIN TOWER ★ 126.2 340.2	GND CON 336.4	CLNC DEL 301.0	ASR/PAR
-----------------------	-----------------------------	---	----------------------	-----------------------	---------



EMERG SAFE ALT 100 NM 3700



CATEGORY	A	B	C	D	E
S-19L *	800-1/2 484	(500-1/2)	800-1 484	(500-1)	
CIRCLING	820-1 504 (600-1)	840-1 524 (600-1)	840-1 1/2 524 (600-1 1/2)	880-2 564 (600-2)	1080-2 3/4 764 (800-2 3/4)

MERIDIAN, MISSISSIPPI
Amdt 2 08SEP22

32°33' N -88°33' W

MERIDIAN NAS (MC CAIN FIELD) (KNMM)

TACAN Y RWY 19L

SC-4, 26 DEC 2024 to 23 JAN 2025

SC-4, 26 DEC 2024 to 23 JAN 2025