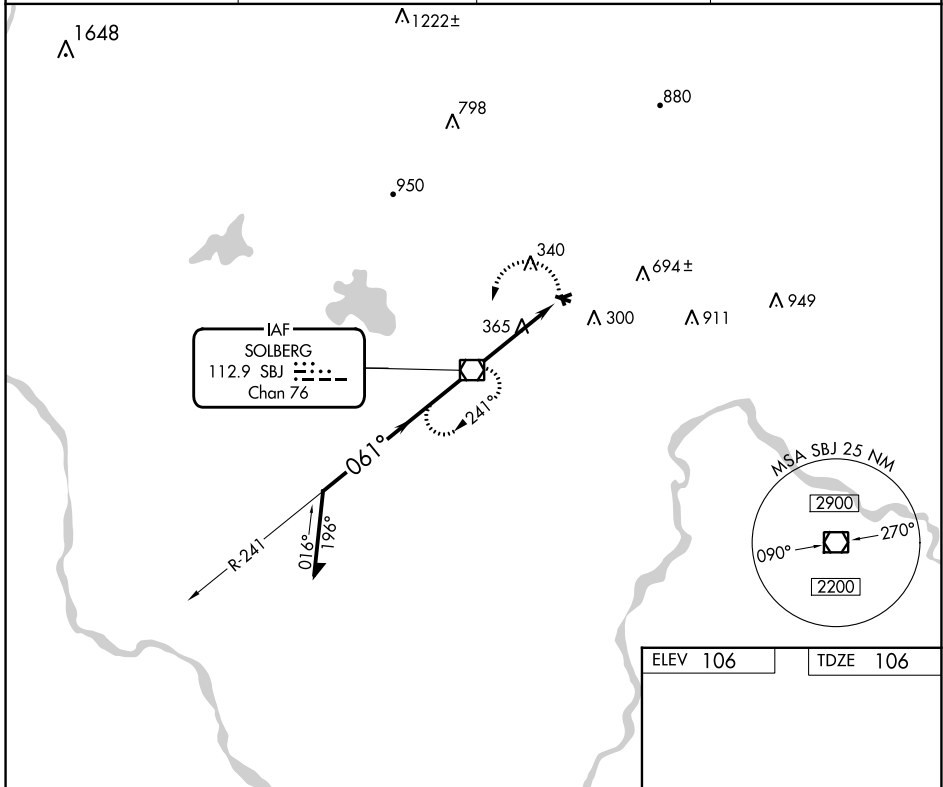


VOR/DME SBJ <b>112.9</b> Chan <b>76</b>	APP CRS <b>061°</b>	Rwy Idg <b>1923</b> TDZE <b>106</b> Apt Elev <b>106</b>
---	------------------------	---

# VOR RWY 8

SOMERSET (SMQ)

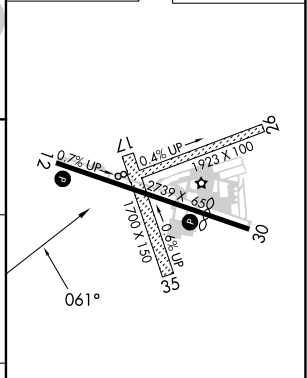
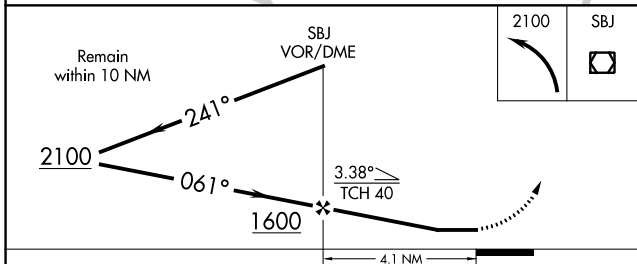
<p><b>▼</b> Circling Rwy 8, 17, 26, 30 and 35 NA at night.  <b>▲</b> Rwy 8 helicopter visibility reduction below 1 SM NA.                  Straight-in Rwy 8 NA at night.</p>		<p>MISSED APPROACH: Climbing left turn to 2100 direct SBJ VOR/DME and hold.</p>	
ASOS <b>120.6</b>	NEWARK APP CON <b>132.8 379.9</b>	UNICOM <b>123.0 (CTAF)</b>	<b>118.325 0</b>



NE-2, 26 DEC 2024 to 23 JAN 2025

NE-2, 26 DEC 2024 to 23 JAN 2025

ELEV 106	TDZE 106
----------	----------



CATEGORY	A	B	C	D
S-8	700-1	594 (600-1)		NA
<b>C</b> CIRCLING	700-1 594 (600-1)	960-1¼ 854 (900-1¼)		NA

REIL Rwys 12 and 30 <b>0</b>				
MIRL Rwy 12-30 <b>0</b>				
FAF to MAP 4.1 NM				
Knots	60	90	120	150 180
Min:Sec	4:06	2:44	2:03	1:38 1:22