

VOR/DME FHU 113.6 Chan 83	APP CRS 259°	Rwy Idg 12001 TDZE 4629 Apt Elev 4719
---	------------------------	--

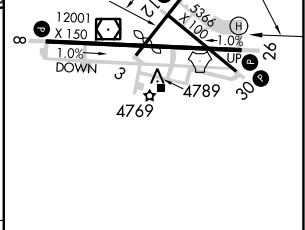
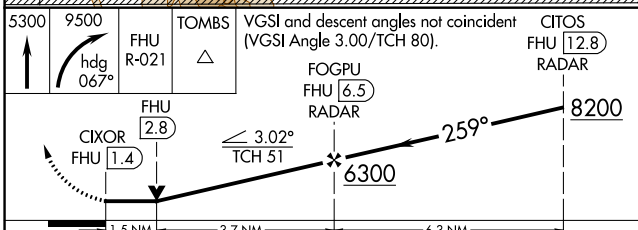
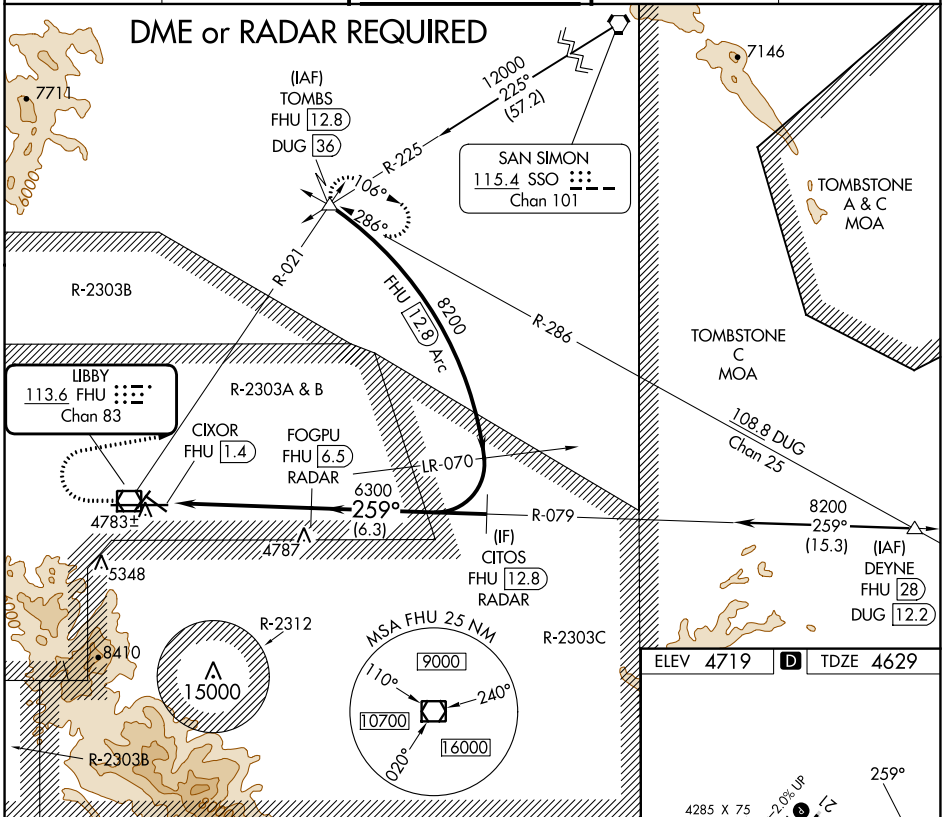
VOR RWY 26

SIERRA VISTA MUNI-LIBBY AAF (FHU)

⚠ Circling NA south of Rws 8 and 30. DME or RADAR required.

MISSED APPROACH: Climb to 5300 then climbing right turn to 9500 on heading 067° and FHU R-021 to TOMBS INT/ DUG 36 DME and hold, continue climb-in-hold to 9500.

ATIS 134.75 263.025	LIBBY AAF GCA* 127.05 254.25	LIBBY TOWER* 124.95 (CTAF) 284.75	GND CON 121.7 268.7	UNICOM 122.95
-------------------------------	--	---	-------------------------------	-------------------------



CATEGORY	A	B	C	D
S-26	5140-1 511 (500-1)		5140-1½ 511 (500-1½)	
CIRCLING	5160-1 441 (500-1)	5180-1 461 (500-1)	5180-1⅝ 461 (500-1½)	5280-2 561 (600-2)

HIRL Rwy 8-26 **Ⓛ**
MIRL Rws 3-21 and 12-30 **Ⓛ**

FAF to MAP 5.1 NM

Knots	60	90	120	150	180
Min:Sec	5:06	3:24	2:33	2:02	1:42

SW-4, 26 DEC 2024 to 23 JAN 2025

SW-4, 26 DEC 2024 to 23 JAN 2025