

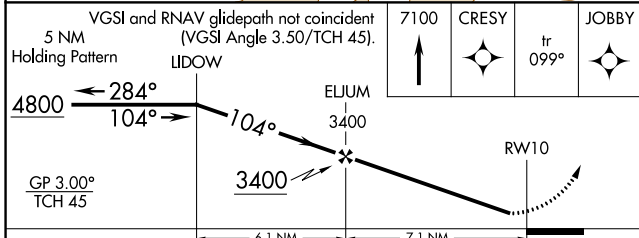
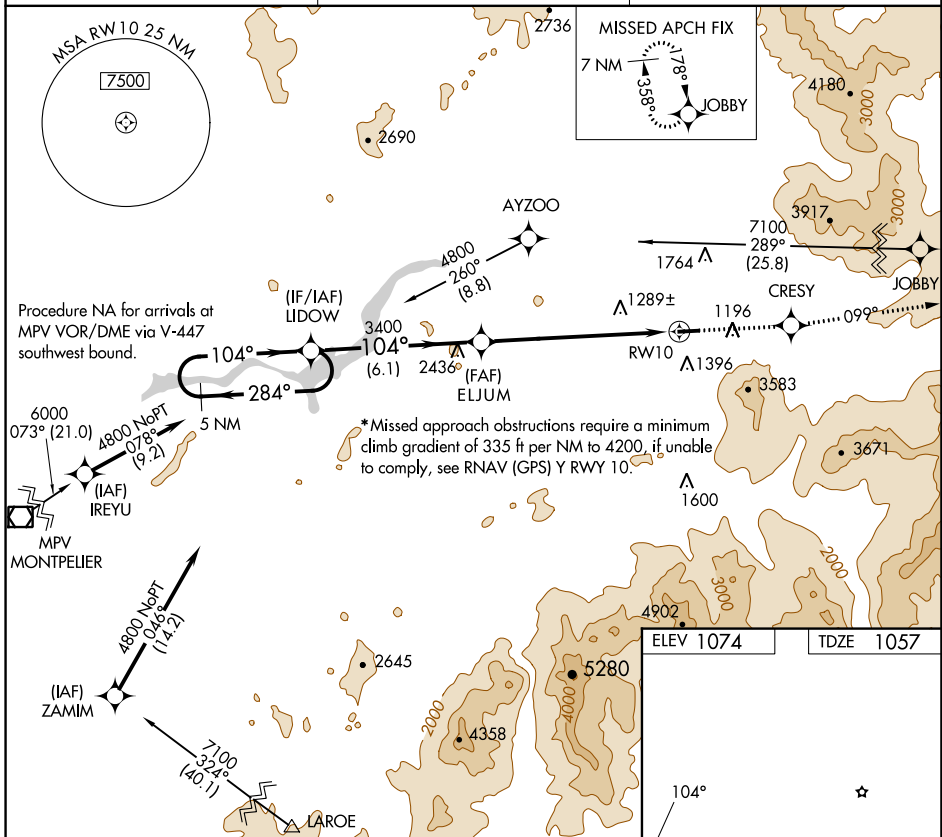
WAAS CH 53512 W10A	APP CRS 104°	Rwy Idg TDZE Apt Elev	4001 1057 1074
--	------------------------	-----------------------------	---

RNAV (GPS) Z RWY 10

MOUNT WASHINGTON RGNL (HIE)

<p>⚠ DME/DME RNP-0.3 NA. Visibility reduction by helicopters NA. When local altimeter setting not received, use Lyndonville altimeter setting and increase DA 71 feet and LPV all Cals visibility 1/2 mile.</p> <p>⚠ -29°C</p>	<p>⚠ MISSED APPROACH: Climb to 7100 direct CRESY and via track 099° to JOBBY and hold, continue climb-in-hold to 7100.</p>
--	---

ASOS 118.525	BOSTON CENTER 135.7 282.2	UNICOM 122.8 (CTAF) ①
------------------------	-------------------------------------	---------------------------------



ELEV 1074	TDZE 1057
-----------	-----------

CATEGORY	A	B	C	D
*LPV DA	1507-1 1/2 450 (500-1 1/2)			NA

NE-1, 26 DEC 2024 to 23 JAN 2025

NE-1, 26 DEC 2024 to 23 JAN 2025