

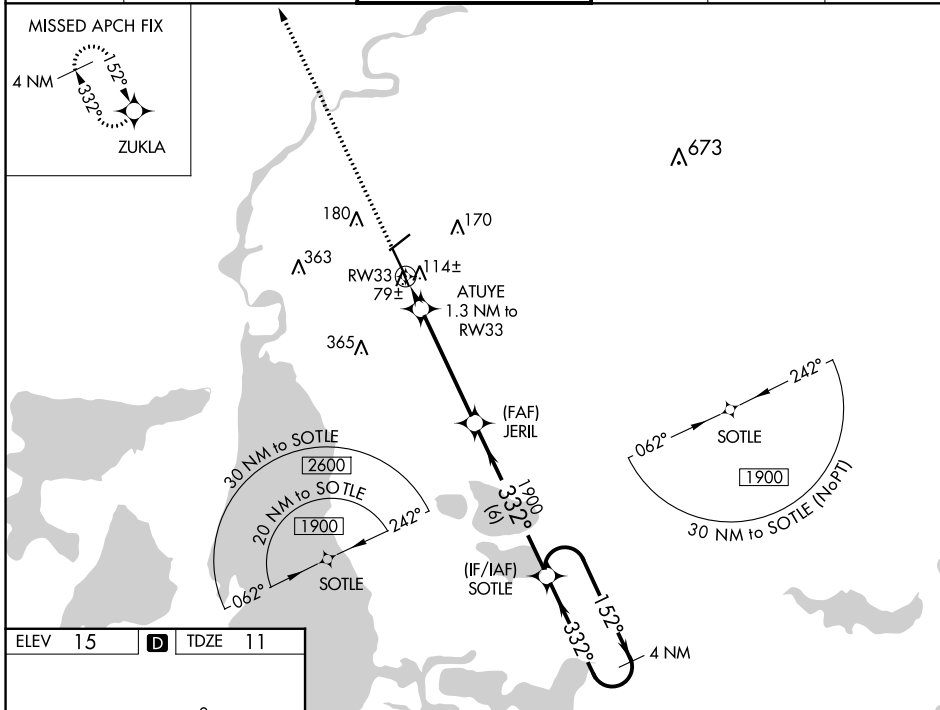
WAAS CH 56215 W33A	APP CRS 332°	Rwy Idg TDZE Apt Elev	6500 11 15
--	------------------------	-----------------------------	---------------------------------------

RNAV (GPS) RWY 33

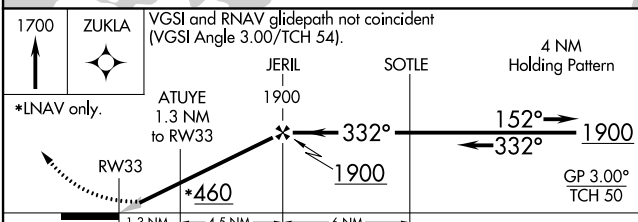
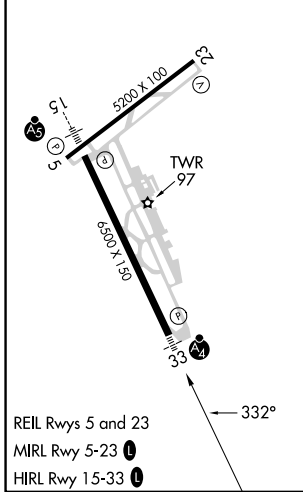
LAKE CHARLES RGNL (LCH)

RNP APCH.	MALSF	MISSED APPROACH: Climb to 1700 direct ZUKLA and hold.
⚠ For uncompensated Baro-VNAV systems, LNAV/VNAV NA below -3°C (27°F) or above 43°C (109°F). For inop MALSF, increase LNAV/VNAV all Cats visibility to 7/6 and LNAV all Cats visibility to 1 mile.		

ATIS 118.75	LAKE CHARLES APP CON* 119.35 353.75	LAKE CHARLES TOWER* 120.7 (CTAF) 257.8	GND CON 121.8	CLNC DEL 126.25	UNICOM 122.95
-----------------------	---	--	-------------------------	---------------------------	-------------------------



ELEV 15	D	TDZE 11
---------	----------	---------



CATEGORY	A	B	C	D
LPV DA		211-3/4	200 (200-3/4)	
LNAV/VNAV DA		296-3/4	285 (300-3/4)	
LNAV MDA		380-3/4	369 (400-3/4)	
C CIRCLING	440-1 425 (500-1)	480-1 465 (500-1)	580-1 1/2 565 (600-1 1/2)	680-2 1/4 665 (700-2 1/4)

SC-4, 26 DEC 2024 to 23 JAN 2025

SC-4, 26 DEC 2024 to 23 JAN 2025