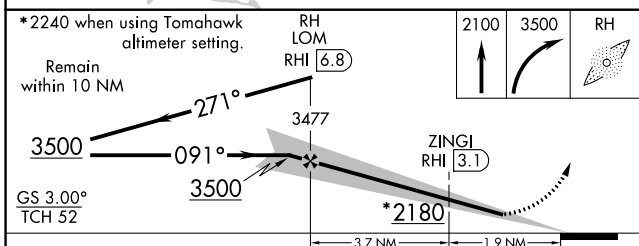
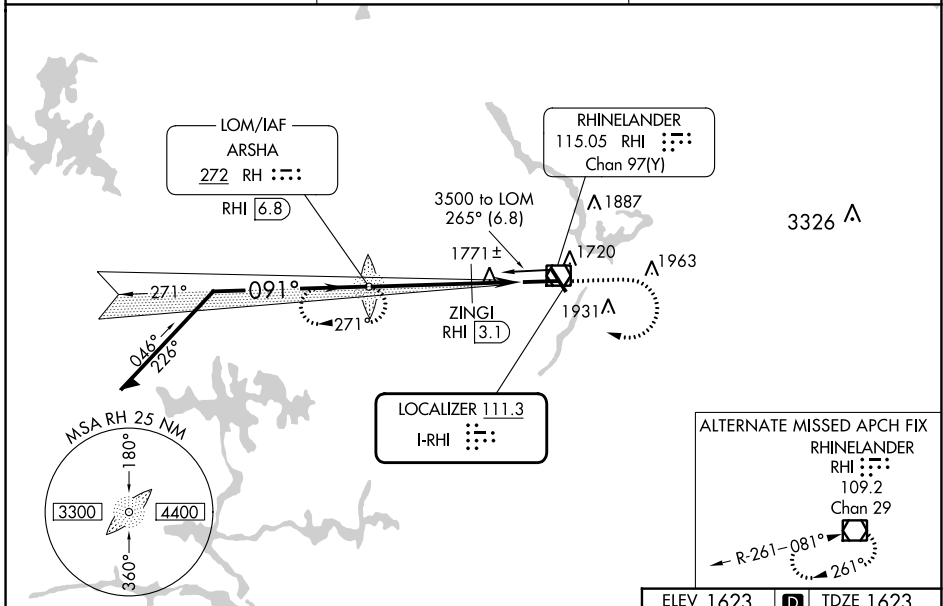


LOC I-RHI <b>111.3</b>	APP CRS <b>091°</b>	Rwy Idg <b>6799</b>
		TDZE <b>1623</b>
		Apt Elev <b>1623</b>

# ILS or LOC RWY 9

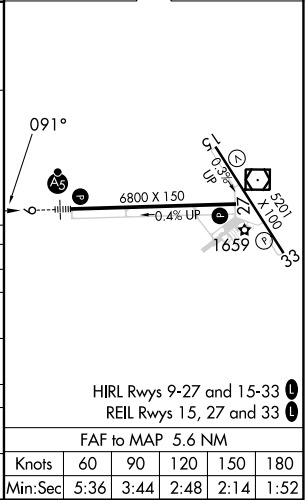
RHINELANDER/ONEIDA COUNTY (RHI)

ADF or DME required.		MALSR 	MISSED APPROACH: Climb to 2100 then climbing right turn to 3500 direct ARSHA LOM/RHI VOR/DME 6.8 DME and hold, continue climb-in-hold to 3500.
NA ** DME from RHI VOR/DME.			
ASOS <b>126.825</b>	MINNEAPOLIS CENTER <b>133.65 281.5</b>	UNICOM <b>123.0</b> (CTAF)	



ELEV 1623		TDZE 1623
-----------	--	-----------

CATEGORY	A	B	C	D
S-ILS 9	1823-½ 200 (200-½)			
S-LOC 9	2180-½	557 (600-½)	2180-1⅛	557 (600-1⅛)
CIRCLING	2180-1 557 (600-1)	2260-1 637 (700-1)	2260-1¾ 637 (700-1¾)	2280-2 657 (700-2)
ZINGI FIX MINIMUMS**				
S-LOC 9	2040-½	417 (500-½)	2040-¾	417 (500-¾)
CIRCLING	2100-1 477 (500-1)	2260-1 637 (700-1)	2260-1¾ 637 (700-1¾)	2280-2 657 (700-2)



EC-3, 26 DEC 2024 to 23 JAN 2025

EC-3, 26 DEC 2024 to 23 JAN 2025