

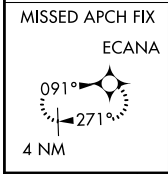
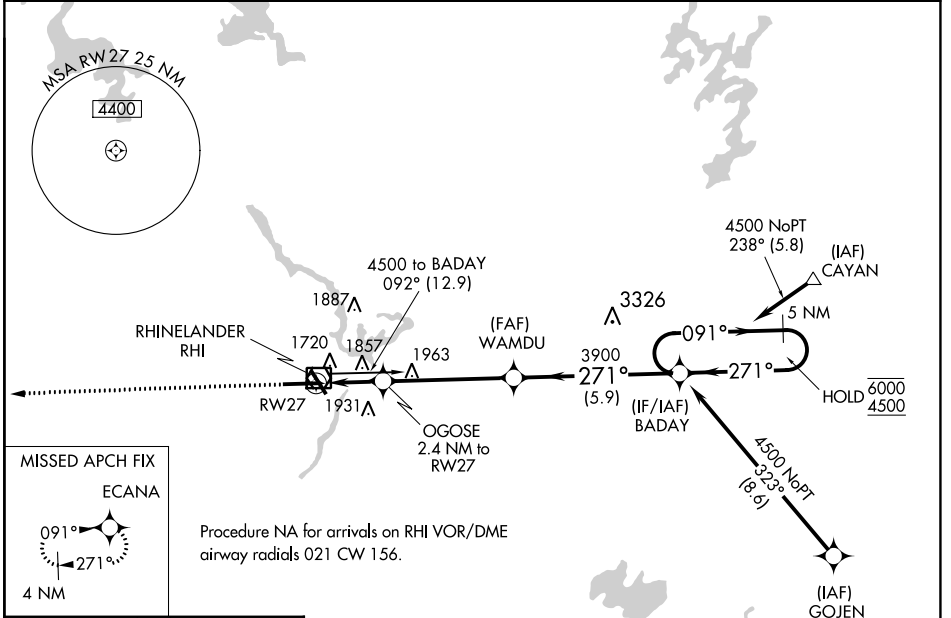
WAAS CH <b>50217</b> <b>W27A</b>	APP CRS <b>271°</b>	Rwy Idg <b>6799</b> TDZE <b>1605</b> Apt Elev <b>1623</b>
--	------------------------	---

# RNAV (GPS) RWY 27

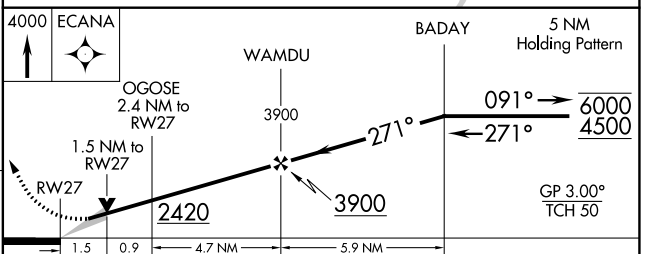
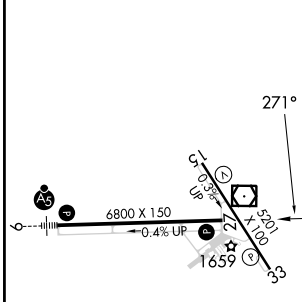
RHINELANDER/ONEIDA COUNTY (RHI)

RNP APCH - GPS.	<p><b>▽</b> For uncompensated Baro-VNAV systems, LNAV/VNAV</p> <p><b>▲</b> NA below -22°C or above 54°C.</p>
<p>MISSED APPROACH: Climb to 4000 direct ECANA and hold.</p>	

ASOS <b>126.825</b>	MINNEAPOLIS CENTER <b>133.65 281.5</b>	UNICOM <b>123.0</b> (CTAF) <b>0</b>
------------------------	---	--



ELEV 1623	<b>D</b>	TDZE 1605
-----------	----------	-----------



CATEGORY	A	B	C	D
LPV DA		1805- <sup>3</sup> / <sub>4</sub>	200 (200- <sup>3</sup> / <sub>4</sub> )	
LNAV/VNAV DA		1920- <sup>7</sup> / <sub>8</sub>	315 (300- <sup>7</sup> / <sub>8</sub> )	
LNAV MDA	2120-1	515 (500-1)	2120-1 <sup>3</sup> / <sub>8</sub>	515 (500-1 <sup>3</sup> / <sub>8</sub> )
CIRCLING	2120-1 497 (500-1)	2260-1 637 (700-1)	2260-1 <sup>3</sup> / <sub>4</sub> 637 (700-1 <sup>3</sup> / <sub>4</sub> )	2280-2 657 (700-2)

EC-3, 26 DEC 2024 to 23 JAN 2025

EC-3, 26 DEC 2024 to 23 JAN 2025