

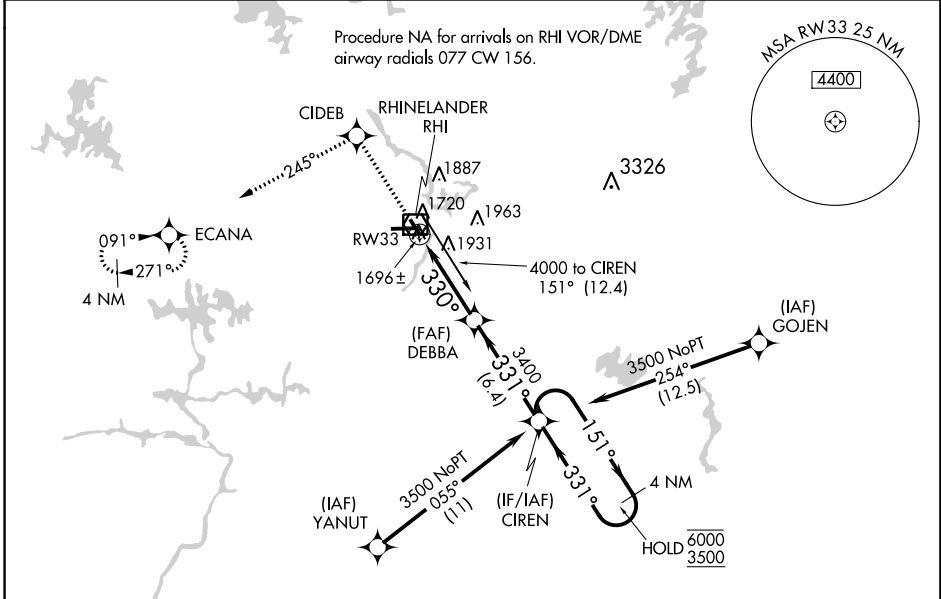
WAAS CH 69407 W33A	APP CRS 330°	Rwy Idg 5201 TDZE 1611 Apt Elev 1623
--	------------------------	---

RNAV (GPS) RWY 33

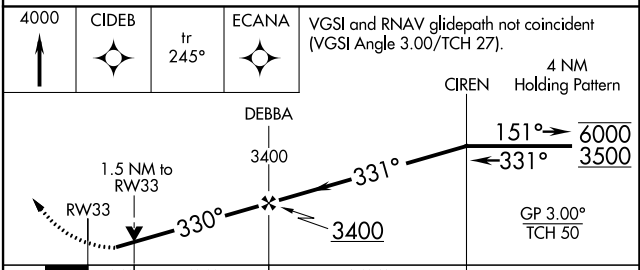
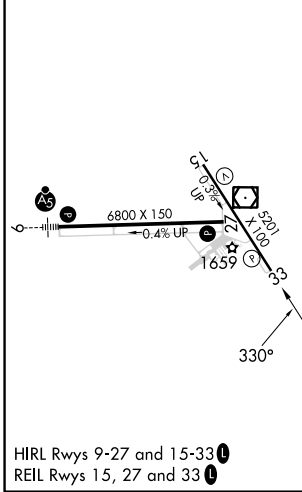
RHINELANDER/ONEIDA COUNTY (RHI)

RNP APCH - GPS.	MISSED APPROACH: Climb to 4000 direct CIDEB and on track 245° to ECANA and hold.
<p>▼ For uncompensated Baro-VNAV systems, LNAV/VNAV NA below -18°C or above 54°C.</p> <p>▲ Rwy 33 helicopter visibility reduction below ¾ SM NA.</p>	

ASOS 126.825	MINNEAPOLIS CENTER 133.65 281.5	UNICOM 123.0 (CTAF) 0
------------------------	---	---------------------------------



ELEV 1623	D	TDZE 1611
-----------	----------	-----------



CATEGORY	A	B	C	D
LPV DA		1861-1	250 (300-1)	
LNAV/VNAV DA		1920-1	309 (300-1)	
LNAV MDA	2100-1	489 (500-1)	2100-1 ³ / ₈	489 (500-1 ³ / ₈)
CIRCLING	2100-1 477 (500-1)	2260-1 637 (700-1)	2260-1 ³ / ₄ 637 (700-1 ³ / ₄)	2280-2 657 (700-2)

EC-3, 26 DEC 2024 to 23 JAN 2025

EC-3, 26 DEC 2024 to 23 JAN 2025